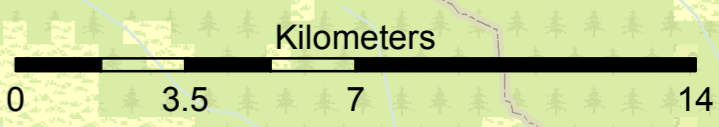
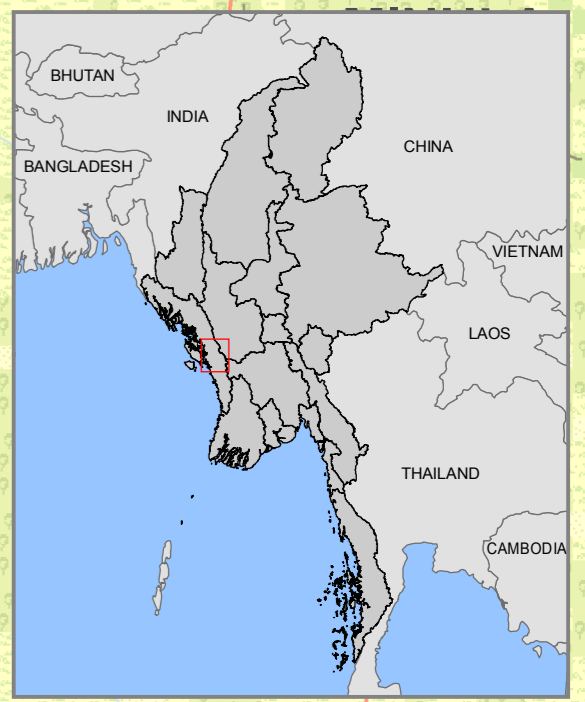
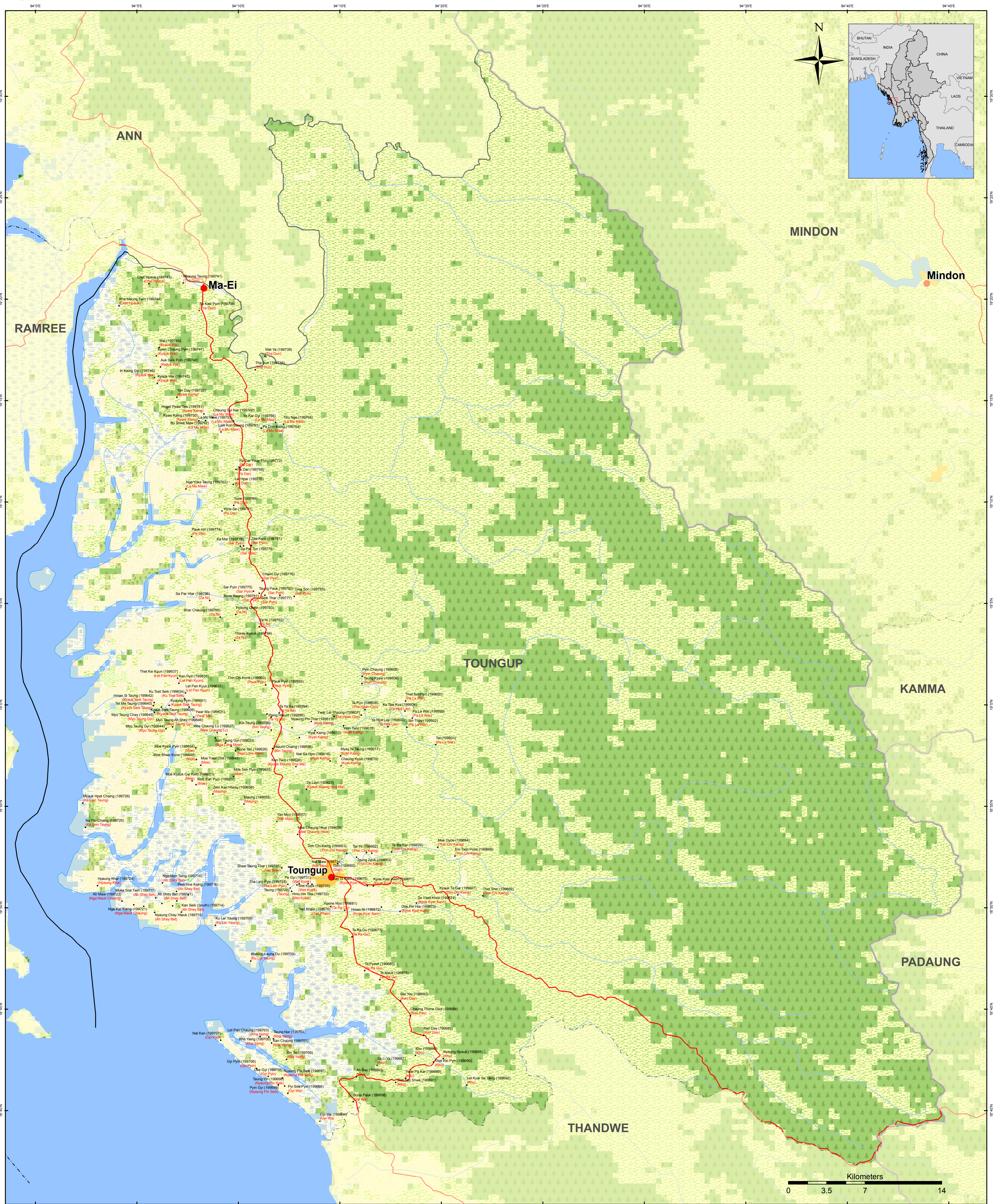


Toungup Township - Rakhine State



Map ID: MIMU154v04
Creation Date: 3 May 2016,A1
Projection/Datum: Geographic/WGS84

Data Source:
 BASE MAP - MIMU:Boundaries - WFP,modified by MIMU 2008;
 Landcover - LP DAAC - MCD12Q1 2011 V.5 IGP (Type1)
 Place name - Ministry of Home Affair (GAD)
 translated by MIMU

Map produced by the MIMU - E-mail: info.mimu@undp.org
 Website: www.themimu.info

Legend

- Village
- Town
- Road
- Railway
- Shore
- Township Boundary
- District Boundary
- State Boundary
- International Boundary
- Non-Perennial/Intermittent/Fluctuating
- Perennial/Permanent

Landcover

- Crop and Vegetation
- Forest
- Mixed Forest
- Grassland
- Shrubland
- Snow Ice
- Urban Build-up
- BareLand
- Wetland
- Water

Village Name
Ting Kawk (166214)
(Ting Kawk)
 Pcode
 Village Tract Name

Myanmar Information Management Unit (MIMU) is a common resource of the Humanitarian Country Team (HCT) providing information management services, including GIS mapping and analysis, to the humanitarian and development actors both inside and outside of Myanmar.

NOTE : Due to the limited space of label for Villages, some Village's name will not be appeared on this map.

Copyright © Myanmar Information Management Unit 2016. May be used free of charge with attribution. For more information see <http://www.themimu.info/license>. This notice cannot be modified or removed.

Disclaimer: The names shown and the boundaries used on this map do not imply official endorsement or acceptance by the United Nations.