

Existing Vegetation Type for American Samoa

11S

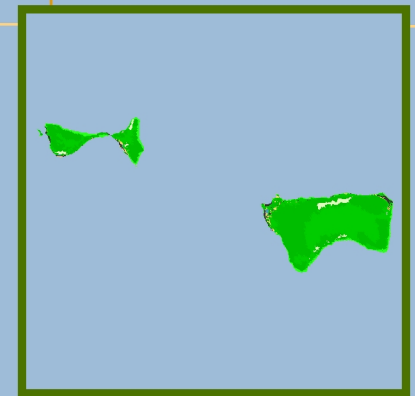
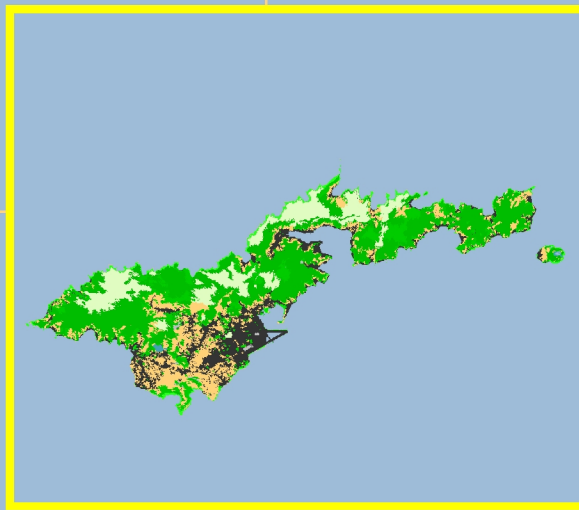
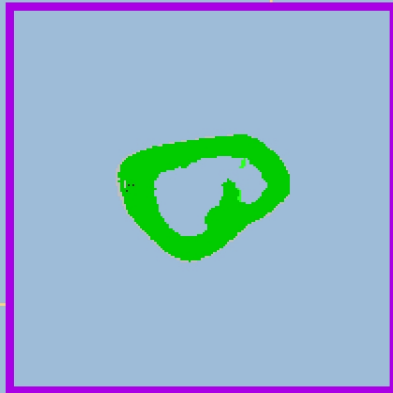
12S

172W

13S

170W

14S



Existing Vegetation Type

-  Water
-  Urban
-  Pacific Islands Upland Forest
-  Pacific Islands Swamp/Marsh
-  Pacific Islands Scrub Forest/Shrub
-  Pacific Islands Mangrove Forest
-  Pacific Islands Lowland Forest
-  Pacific Islands Littoral/Strand Vegetation
-  Barren
-  Agriculture

