

# MBTA Ruggles Station Commuter Rail Platform Project

MBTA Contract No. S31PS01

Legislative Briefing September 20, 2012





# MBTA Ruggles Station Commuter Rail Platform Project

## Project Description

Construction of a new commuter rail platform at Ruggles Station to serve Track 2

## Project Benefits

- ❑ Improve service/access to Ruggles Station
- ❑ Improve operational flexibility



## Project History

- Original Orange Line and Commuter Rail station opened in 1987
- MBTA considered constructing an additional platform as early as 1993 to improve service.
- Amtrak high speed train service began running along the Northeast Corridor in 1993.
- Amtrak Acela service began in November 2000.
- Longwood Medical area became the densest concentration of employment outside the downtown Boston central business district.
- MASCO shuttle service provided transportation for approximately 2,800 passengers from Ruggles Station daily in 2008.
- In the past 20 years NEU has invested more than \$485 million in residence halls, academic and research facilities, and athletic centers.
- Commuter rail ridership blossomed since opening making it the fourth busiest destination station on the commuter rail network.

## Project Need

- 30% of Inbound Commuter Trains bypass Ruggles Station requiring a transfer at Backbay Station to the Orange Line to get back to Ruggles
- 500+ passengers affected daily
- Operational flexibility for MBTA & Amtrak
- 4<sup>th</sup> busiest commuter rail station in the MBTA system

# MBTA Ruggles Station Commuter Rail Platform Project

## Project Scope

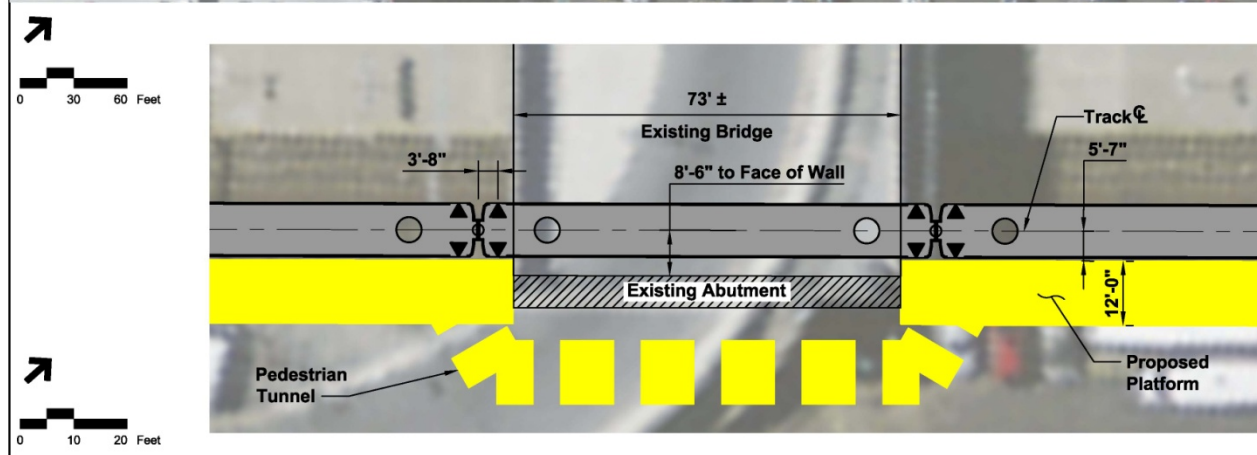
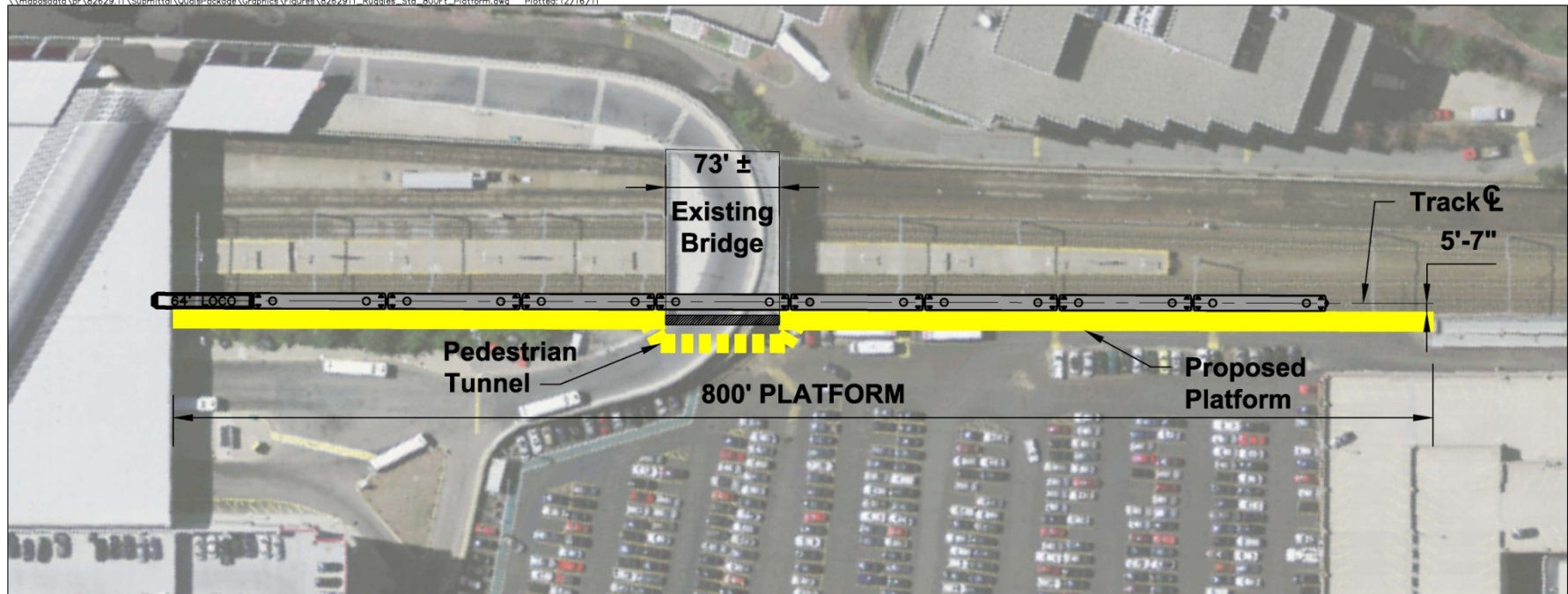
- 800' L x 12' W High-level Platform
- Pedestrian tunnel under busway ramp
- 2-100' Canopies w/ Benches
- Accessible to existing station elevators, ramps
- Security, Signage, Lighting
- Extend Catenary Structures
- Modifications to parking lot
- Constr. Cost Est. - \$20M





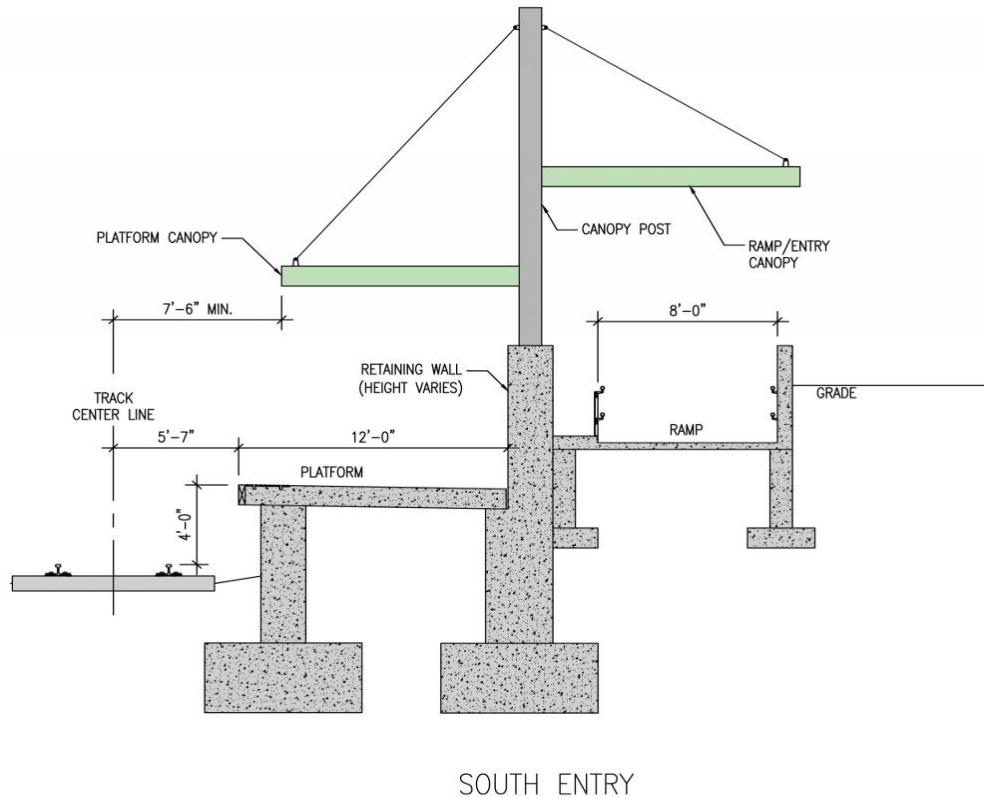
# MBTA Ruggles Station Commuter Rail Platform Project

\\mbosdata\er\82629.11\Submitto\Quota\Package\Graphics\Figures\8262911\_Ruggles\_Sta\_800Ft\_Platform.dwg Plotted:12/16/11



 Vanasse Hangen Brustlin, Inc. 99 High Street 10th Floor Boston, MA 02110-2354 617.728.7777 Fax 617.728.7782		
<b>MBTA Ruggles Station Platform Concept Plan</b>		
SCALE: AS NOTED	DATE: 12/16/11	SHEET 1 OF 1
DRAWN BY: LRD	CHECKED BY:	APPROVED BY:

## New Platform – Section View





# MBTA Ruggles Station Commuter Rail Platform Project

## Coordination with Northeastern University Project





# MBTA Ruggles Station Commuter Rail Platform Project

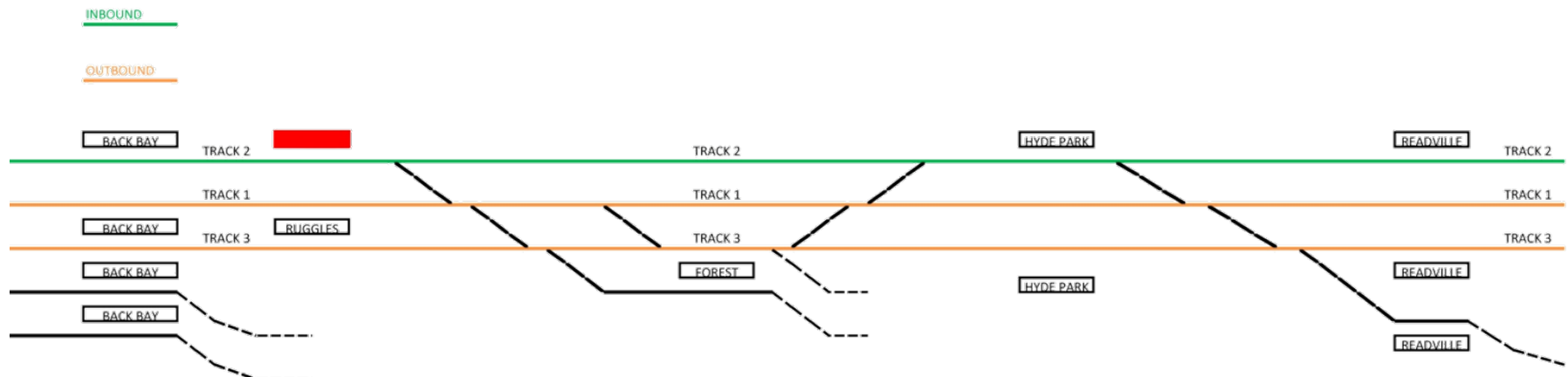
## Operations

### EXISTING SERVICE

- MBTA - 29 Inbound Trains and 49 Outbound Trains stop at Ruggles
- MBTA – 14 Bus Routes
- MBTA – Orange Line
- Amtrak – No current stops at Ruggles
- MASCO Shuttles – 10 Routes, 11,000 riders each day

### PROPOSED SERVICE

- MBTA – Increase number of inbound trains stopping at Ruggles to create more balanced service
- Amtrak – Improved service by eliminating commuter rail crossing movements at Readville resulting in less impact (delays) to Amtrak service



## Construction Staging

- ❑ Construction Staging in NEU Parking Lot
- ❑ Temporary off-peak closure of Track 2 for *Platform Construction*
- ❑ Temporary off-peak closure of tracks for *Catenary Modifications*
- ❑ Coordinate with NEU Project

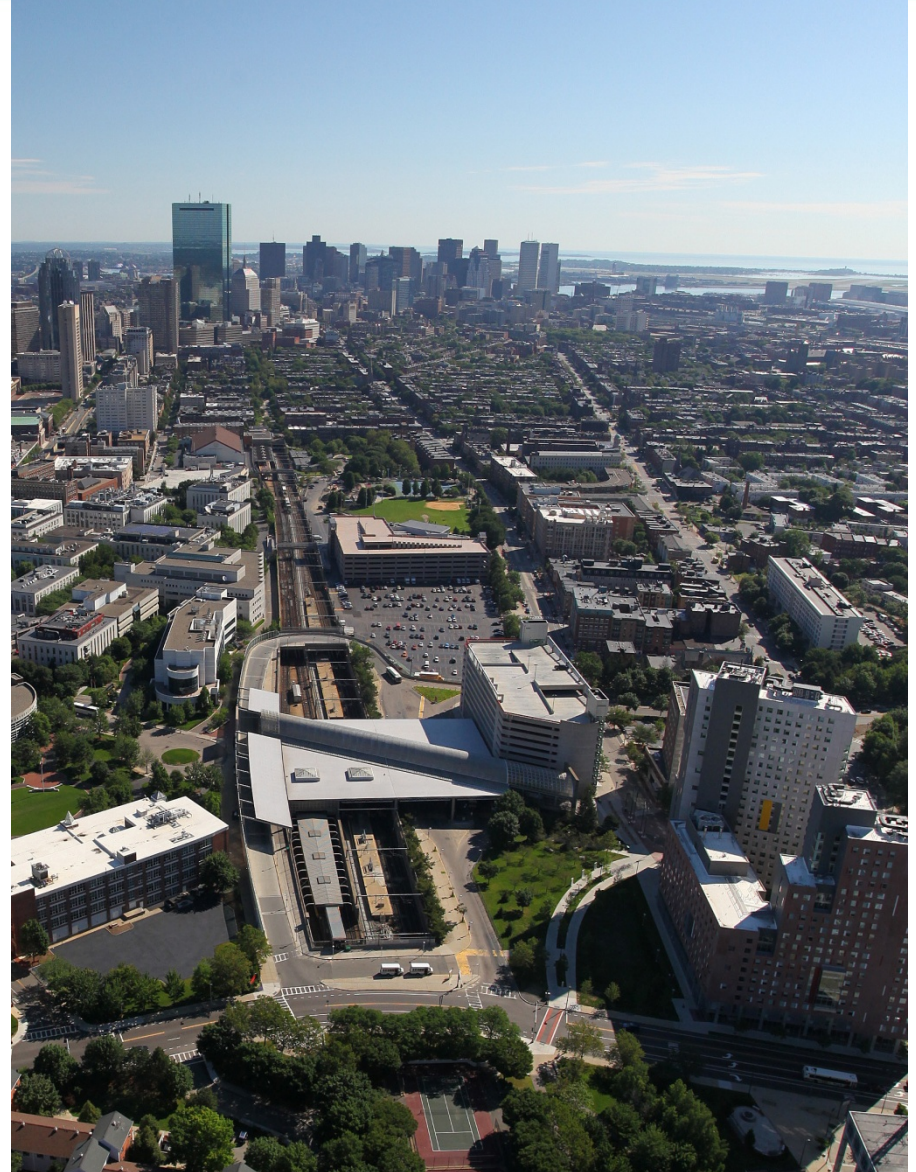




# MBTA Ruggles Station Commuter Rail Platform Project

## Stakeholders

- Northeastern University
- City of Boston
- MASCO
- Amtrak
- Longwood Medical Area
- Roxbury Neighborhoods
- Mission Hill
- Wentworth Institute
- Museum of Fine Arts
- Mass College of Art



## Public Outreach

- Project Webpage  
[http://www.mbta.com/about the mbta/t projects/default.asp?id=25059](http://www.mbta.com/about_the_mbta/t_projects/default.asp?id=25059)
- Internet Communications
- Media Outreach
- On-going coordination with stakeholders
- Open house/public meetings
- Project documents



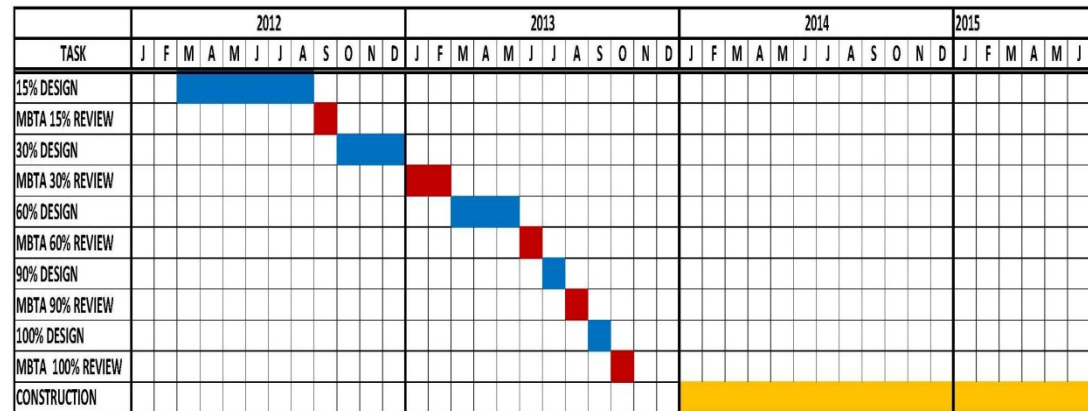
## Public Outreach Schedule

- |                              |                                |
|------------------------------|--------------------------------|
| ■ MASCO                      | June 5, 2012                   |
| ■ Northeastern University    | August 8, 2012 (on-going)      |
| ■ City of Boston             | August 16, 2012                |
| ■ Legislative Briefing       | September 20, 2012             |
| ■ NEU Project Public Meeting | September 20, 2012             |
| ■ Open House                 | October 18, 2012 (4:30 – 6:30) |

# MBTA Ruggles Station Commuter Rail Platform Project

## Project Schedule

- **Design Phase—**  
Complete in October 2013
- **Construction – 2014**  
to mid 2015
- **Construction**  
Duration– 18 months





# MBTA Ruggles Station Commuter Rail Platform Project

MBTA Contract No. S31PS01

