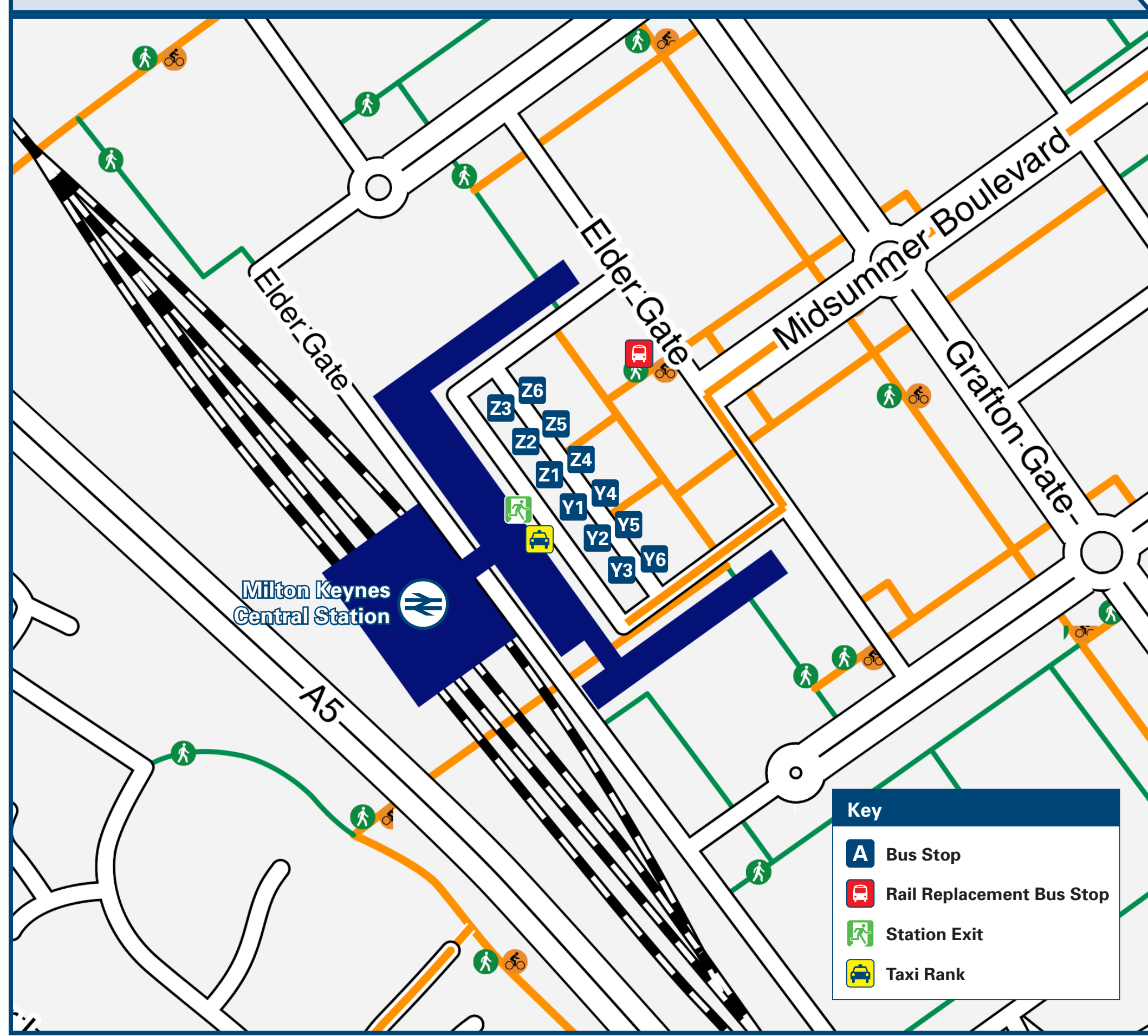




# Milton Keynes Central Station

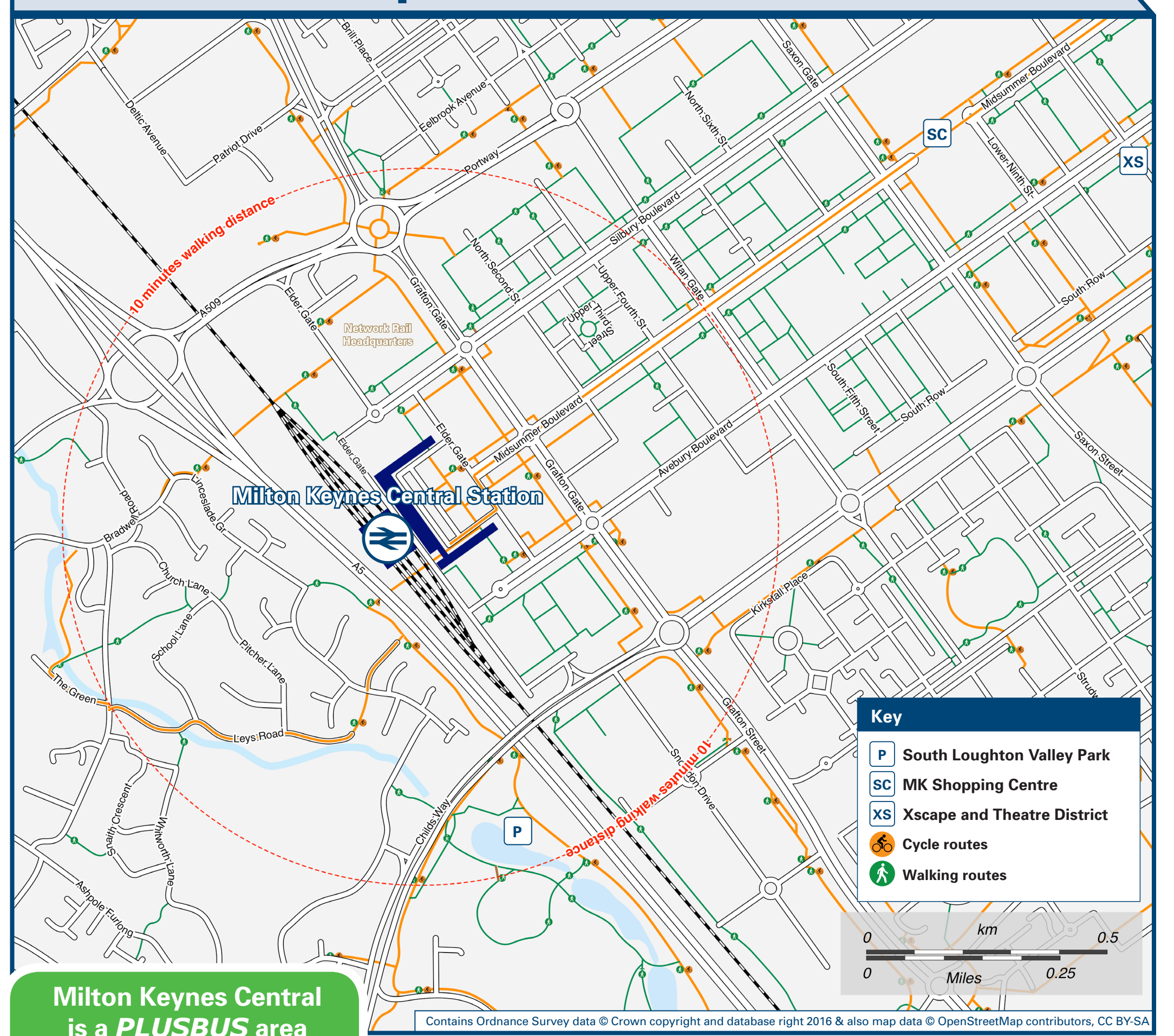
## Onward Travel Information

### Buses and Taxis



Rail replacement buses/coaches depart from outside this station on Elder Gate (please see Buses and Taxis map above).

### Local area map



Milton Keynes Central is a PLUSBUS area



PLUSBUS is a discount price 'bus pass' that you buy with your train ticket. It gives you unlimited bus travel around your chosen town, on participating buses. Visit [www.plusbus.info](http://www.plusbus.info)

### Main destinations by bus (Data correct at June 2016)

DESTINATION	BUS ROUTES	BUS STOP
Ashland	1, 6	Y1 Z1
Aylesbury	60, 150, X60	V6 Z4
Bancroft	5, 6, 33, 33A	Z3 Z5
Beanhill	1, 4, 150, X31	Y2 V6 Z1
Bedford	40, C1, C10, C11, X5	Y4 V6
Bicester	X5	Z4
Blakelands	2	V5
Bletchley	1, 4, 5, 6, 7, 24, 28, 70, X31	Y1 Y2 V3 V6 Z1 Z5
Bradville	5, 7, 13, 23, 33, 33A	V6 V6 Z3 Z5
Bradwell	5, 6, 13, 33, 33A	Z3 Z5
Bromham	40	V6
Broughton/Broughton Gate	8, 25, 300, C1, C11	Y3 Y4 V6
Browns Wood	8	V3
Buckingham	60, X5, X60	V6 Z4
Cambridge	X5	V4
Campbell Park	1, 2, 7, 8, 11, 11A, 12, 12A, 21, 40, C1, C10, C11	V3 Y4 V6 V6
Castlethorpe	33, 33A	Z5
Central Milton Keynes (City Centre)	All buses* from	Y1 Y2 V3 V4 V5 V6
Coachway (for National Express services)	25, 40, 300, C1, C10, C11, X5	V3 Y4 V6
Coffee Hall	1, 4, 5, 6	Y1 Y2 Z1
Conniburrow	23, 25	V6
Corby	X4	Z4
Cranfield (& Cranfield University)	C1, C10, C11	V4
Crownhill	2, 28	Z2 Z5
Deanshanger	89, 90, 90A, 91	Z5
Downs Barn	1, 2, 7	V6
Dunstable (and L&D Hospital)	70, X31	V6
Emerson Valley	7, 8, 24, 28	V6 Z1 Z2 Z5
Fenny Stratford	1, 5, 70, X31	Y1 V6 Z1
Fullers Slade	6	Z3
Furzton	7, 28	V6 Z5
Grange Farm	2	Z2
Great Holm	2, 7, 14, 28	Z1 Z3 Z5
Great Linford	7, 21, 23, 25	V6 V6 Z1
Greenleys	14	Z3
Hanslope	33, 33A	Z5
Hartwell	33, 33A	Z5
Haversham	33, 33A	Z5
Heelands	5, 6, 13	Z3 Z5
Hockliffe	X31	V6

DESTINATION	BUS ROUTES	BUS STOP
Hodge Lea	6, 14	Z3
Kempston	C1, C10, C11	V4
Kents Hill	8, 12, 12A	V3 Y4
Kettering	X4	Z4
Kiln Farm	6, 89, 90, 90A, 91	Z3 Z5
Kingsmead	8	Z2
Kingston District Centre	8, 300, C1, C11	V3 Y4
Lakes Estate	1, 5, 6, 70	Y1 V6 Z1
Lavendon	21	V6
Leadenhall	1	Z1
Leicester	X7	Z4
Leighton Buzzard	70, 150	V6
Little Brickhill	X31	V6
Loughton	2, 7, 14, 24	Z1 Z2 Z5
Luton (Town Centre & Rail Station)	70, 99, X31	V6 Z5
Luton Airport	99	Z6
Magna Park	300	V6
Market Harborough	X7	Z4
Marston Moretaine	C10, C11	V4
Milton Keynes Hospital	1, 4, 5, 6, 14, 28, X31	Y1 Y2 V3 V4 V5 V6
Milton Keynes City Centre (thecentre:mk)	All buses* from	Y1 Y2 V3 V4 V5 V6
Milton Keynes Village	8, 11, 11A, 12, 12A, C1, C11	V3 Y4
Monkston	8, 11, 11A, 12, 12A, C1, C11	V3 Y4
Moulsoe	C1, C11	V4
Mount Farm	5, 6, 150	Y1 V6
Neath Hill	7, 21, 23, 25	V5 V6 Z5
New Bradwell	5, 7, 23	V5 V6 Z5
Newlands	8, 11, 11A, 12, 12A	V3 Y4
Newport Pagnell	1, 2, 21, 25, 40, C10	Y4 V6 V6
Newton Leys	1	Z1
Northampton	33, 33A, X4, X7	Z4 Z5
Old Stratford	89, 90, 90A, 91	Z5
Olney	21	V6
Open University	11, 11A, 12, 12A, OU Shuttle	V4 V5
Oxford	X5	Z4
Oxley Park	8	Z2
Padbury	60, X60	Z4
Peterborough	X4	Z4
Poets Estate/Redhouse Park	2	V5
Potterspury	89, 90, 90A, 91	Z5

DESTINATION	BUS ROUTES	BUS STOP
Roads	33, 33A, X4, X7	Z4 Z5
Shenley Brook End	8, 24, 28	Z2 Z5
Shenley Church End	2, 7, 8, 24, 28	Z1 Z2 Z5
Shenley Lodge	7, 8, 24	Z1 Z2 Z5
Sherington	21, 40	V6
Stacey Buses	6	Z3
Stadium:mk (Milton Keynes Dons FC)	1, 6, 70, 150, X31	Y1 Y2 V6 Z1
Stantonbury	7, 13	V6 Z5
St Neots	X5	V4
Stoke Hammond	70	V6
Stony Stratford	6, 89, 90, 90A, 91	Z3 Z5
Towcester	89, 90, 90A	Z5
Two Mile Ash	14, 89, 90, 90A	Z3 Z5
Walnut Tree	8, 11, 11A, 12, 12A	V3 V4
Wavendon	300	V3
Wavendon Gate	8	V3
Wellingborough	X4	Z4
Westcroft	2, 8, 24, 28	Z2 Z5
Willen	1, 2	V5
Willen Lake	300	V3
Winslow	60, X60	Z4
Woburn Sands	300	V3
Wolverton	5, 6, 7, 14, 23, 33, 33A	V5 V6 Z3 Z5
Woodhill Prison	2	Z2
Woolstone	8, 11, 11A, 12, 12A, C1, C10, C11	V3 V4
Wootton (Bedford Borough)	C1	V4
Wootton (Northamptonshire)	33, 33A	Z5
Yardley Gobion	90, 90A	Z5

#### Notes

- PLUSBUS destination, please see below for details.
- PLUSBUS tickets are valid within the Milton Keynes PLUSBUS zone on Arriva, Centrebus, Stagecoach, Redline Buses, Red Rose, Vale Travel and Z&S International.
- PLUSBUS tickets are NOT valid on Stagecoach service X5, OU Shuttle or University Bus services C1/C10/C11 on this poster.
- \* Not the "Open University" Shuttle buses.
- Direct trains operate to this destination from this station.
- Alternatively change trains at Nuneaton for this destination.
- Change trains at Bletchley for this destination.

### Taxis

Milton Keynes Central is a major station where taxis are usually available on a rank. Advance booking is not normally necessary, unless arriving early in the morning or late at night. Operators who may accept bookings include:  
(Inclusion of this number doesn't represent any endorsement of the taxi firm)

**Skyline**  
01908 222 111

**Raffles**  
01908 222 222

### Further information about all onward travel

[www Local Info](http://www.milton-keynes.gov.uk)
[www Cycle Info](http://www.sustrans.org.uk)
[Bus Times](#)
[NextBuses.mobi](#)
[PLUSBUS](#)

[milton-keynes.gov.uk](http://www.milton-keynes.gov.uk)
[sustrans.org.uk](http://www.sustrans.org.uk)
[www.traveline.info](http://www.traveline.info)
[Find the bus times for your stop.](#)
[plusbus.info](http://plusbus.info)

[National Rail Enquiries](http://www.nationalrail.co.uk)

[www Online](http://www.nationalrail.co.uk)
[NRE App](#)
[Social](#)
[Contact Centre](#)
[Traintracker™ Text](#)

[nationalrail.co.uk](http://nationalrail.co.uk)
[Free National Rail Enquiries app for iOS and Android](#)
[facebook.com/nationalrailenq](https://www.facebook.com/nationalrailenq)
[@nationalrailenq](https://twitter.com/nationalrailenq)
[03457 48 49 50](tel:03457484950)
[8 49 50](tel:84950)



**National Rail**  
Britain's train companies working together



This poster shows details of popular destinations and main, frequent bus routes. Additional services may run, so please check with Traveline or see posters at local bus stops. Whilst considerable care has been taken to ensure the information contained on this poster is correct and accurate, National Rail cannot accept responsibility for any loss or inconvenience caused by any errors or omissions, or for loss, damage, injury or inconvenience relating to the cancellation, alteration, delay or diversion of a service. For any feedback, please e-mail [comments@onwardtravelposters.com](mailto:comments@onwardtravelposters.com)

Scan this code with your mobile to take this poster with you.