

Harald – the northern connection



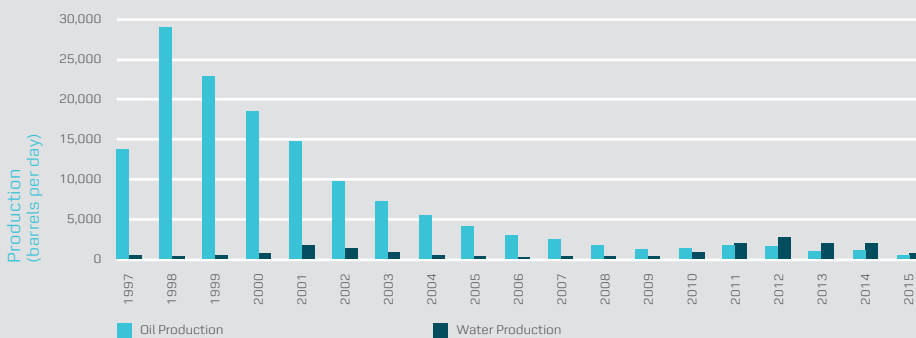
The Harald Field is located at the far north of Danish Underground Consortium's licence area. It mainly contains gas and is connected to the Norwegian gas field Trym by a pipeline.

Production

The recovery of oil from the Harald field takes place by gas expansion, with a moderate, natural influx of water into the reservoir. The Lulita facilities are hosted by the Harald A platform, and the Harald platform processing equipment also handles production from the Lulita Field.

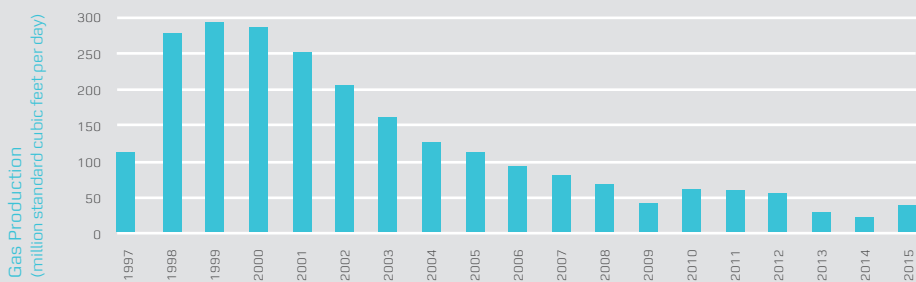
Harald Oil and Water Production 1997-2015

2015: 356 barrels of oil per day



Harald Gas Production 1997-2015

2015: 40 million standard cubic feet of gas per day



Operated production. Maersk Oil production share: 31.2%

Blocks

5604/21 and 22

Licence

Sole Concession

Location

305 km west of Esbjerg

Discovered

1980, 1983

Production start

1997

Producing wells

4 (2 east, 2 west)

Reservoir depth

2,700 m (East), 3,650 m (West)

Water injection wells

0

Field delineation

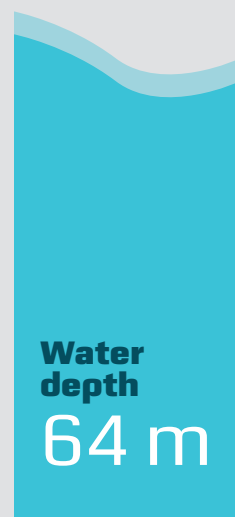
56 km²

Reservoir rock

Chalk (East), Sandstone (West)

Geological age

Danian/Upper Cretaceous (East) and Middle Jurassic (West)



Water depth
64 m

The Harald Field

Main platform built

Netherlands (Harald A)

Installation dates

- Harald A, 1996
- Harald B, 1997

Complex

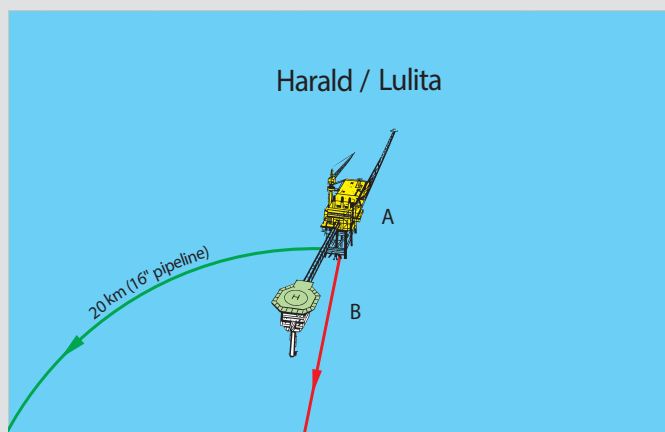
two interconnected platforms

Connections to other platforms

- the unprocessed condensate and the processed gas are transported to Tyra East
- connected to the gas pipeline that transports gas from South Arne to Nybro (normally, no gas is exported from Harald through the South Arne pipeline)
- connected to the Norwegian Trym gas field
- the Lulita facilities are hosted by the Harald A platform

Latest field development

Low Pressure Operation (phase 2), 2009



Oil and Gas Production in Denmark 2012, p. 62, Danish Energy Agency

Total weight

15,958 tonnes

Distance

- 80 km from Harald A to Tyra East F
- 20 km from Harald A to Svend

HARALD

Accommodation

16 beds

Helicopter deck

yes

Wells

four

Platforms

one wellhead and processing platform (A),
one accommodation (B)

Bridges

one connecting the two platforms (approx.
80 m long) and has walkways on two levels