



MUSTANG SURVIVAL FALL 2016

2016/

MUSTANG SURVIVAL

EP OCEAN RACING SERIES

**TEAM COMANCHE /
THE WORLD'S BEST SAILORS
ON THE WORLD'S FASTEST MONOHAUL
NOW HAVE THE WORLD'S BEST GEAR.**

THE 100FT SUPERMAXI, THE COMANCHE, WAS BUILT WITH ONE THING IN MIND; TO BREAK OPEN-OCEAN RACING RECORDS. EVERYTHING COUNTS IN THESE DEMANDING MULTI-DAY RACES AND POOR PERFORMING GEAR CAN DESTROY AN ADVANTAGE. TEAM COMANCHE COLLABORATED WITH MUSTANG SURVIVAL TO GIVE THEM THAT COMPETITIVE EDGE THROUGH GEAR ENGINEERED FOR PERFORMANCE, DESIGNED FOR THE EXTREME, AND BUILT TO WIN.

OCEAN RACING SERIES	2-3
EP 38 INFLATABLE PFD	4-7
OUTERWEAR TECHNOLOGY	8-11
EP 6.5 OCEAN RACING DRY SUIT	12-13
EP 6.5 OCEAN RACING PRO SMOCK	14-15
EP 6.5 OCEAN RACING JACKET	16-17
EP LITE OCEAN RACING SPRAY SMOCK	18-19
EP 6.5 OCEAN RACING SALOPETTES	20-21
REGULATE BASELAYERS	22-27
EP 3250 GLOVES	28-33
GEAR HAULERS/GREENWATER	34-37
GEAR HAULERS/BLUEWATER	38-43
DRY BAGS/BLUEWATER	44-45
SIZING/ABOUT MUSTANG SURVIVAL	46





SYSTEM INTEGRATION WITH THE MUSTANG SURVIVAL OCEAN RACING SERIES

SEAMLESS INTEGRATION OF THERMAL, OUTERWEAR, FLOTATION, AND PROTECTION SOLUTIONS - DESIGNED TO WORK BETTER TOGETHER.

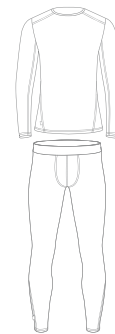
2015 / SYDNEY HOBART

Designed in collaboration with the world's elite sailors, Mustang Survival's Ocean Racing Series makes its debut with Team Comanche at the 2015 Sydney to Hobart race.

Through design, engineering and team collaboration, and with the application of science based research, Mustang Survival has engineered the only Ocean Racing Series designed together in its entirety.

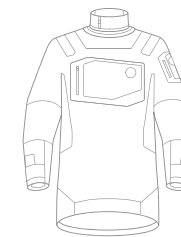
By ensuring our products integrate seamlessly with one another through fit, material selection, and function, the result is a sum greater than its parts; a system benefit that no other can offer.

SYSTEM COMPONENTS



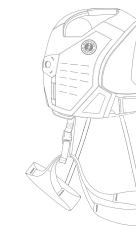
THERMAL MANAGEMENT

Our Regulate base layer products with Fusion Merino™ were developed alongside the EP Ocean Racing outerwear range. Based on the same sizing platform and avoiding pressure points provides seamless integration for an unrestricted range of motion.



OUTERWEAR

Based on decades of developing best-in-class dry suits for elite users, we know that even the best waterproof garment will not perform with the wrong base layer. Paired with our Regulate base layers our EP range of outerwear provides days of superior dry performance.



FLOTATION

A PFD is not only about survival; fit and function can enhance performance and our EP 38 does just that. It fits seamlessly over our outerwear and is designed to stay out of the way so it can be worn for active use and is always there should the unexpected happen.



PROTECTION

To complete the system, our EP 3250 gloves provide critical protection for hands working in harsh environments. And to keep all the gear safe, we've developed a range of gear haulers and roll-top dry bags for organization, storage, and transport.

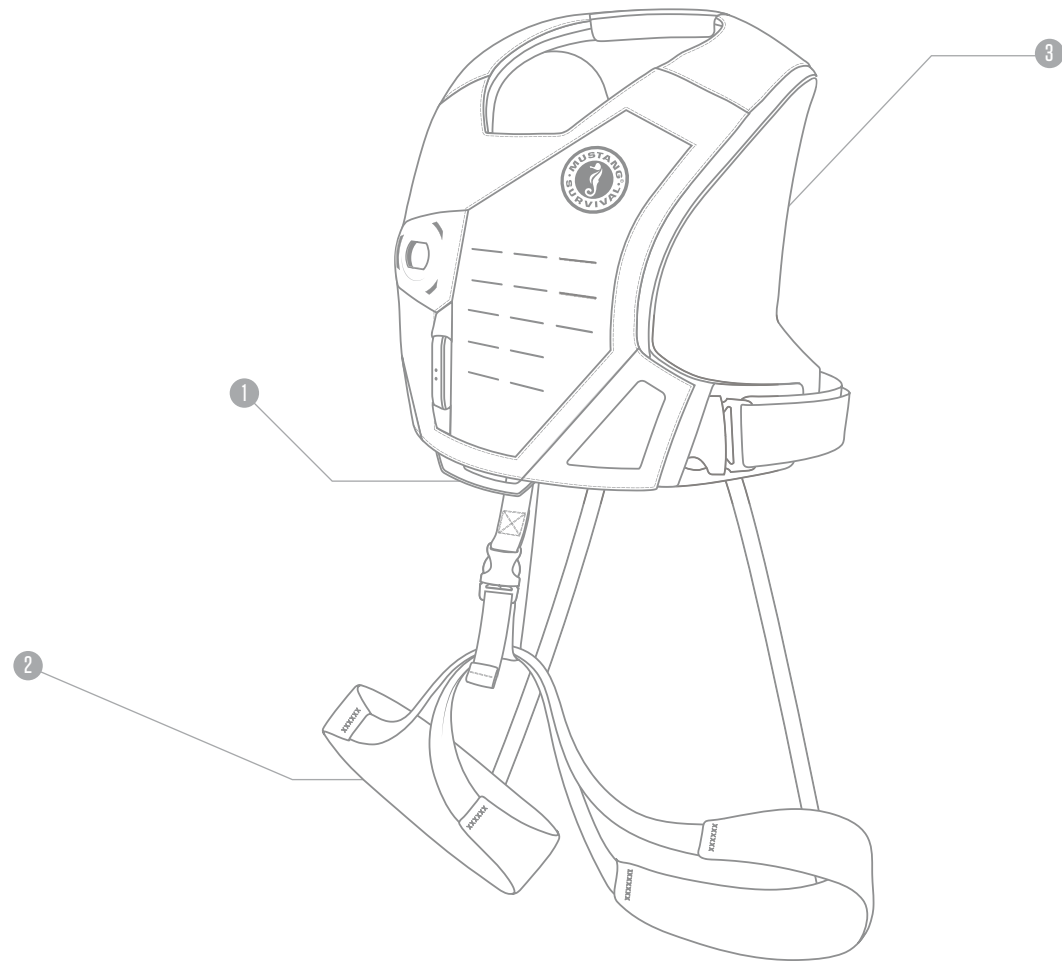
EP 38 INFLATABLE OCEAN RACING VEST

THE ONLY ISAF RACE-READY
INFLATABLE VEST DESIGNED WITH
LOW-PROFILE MEMBRANE INFLATABLE
TECHNOLOGY™

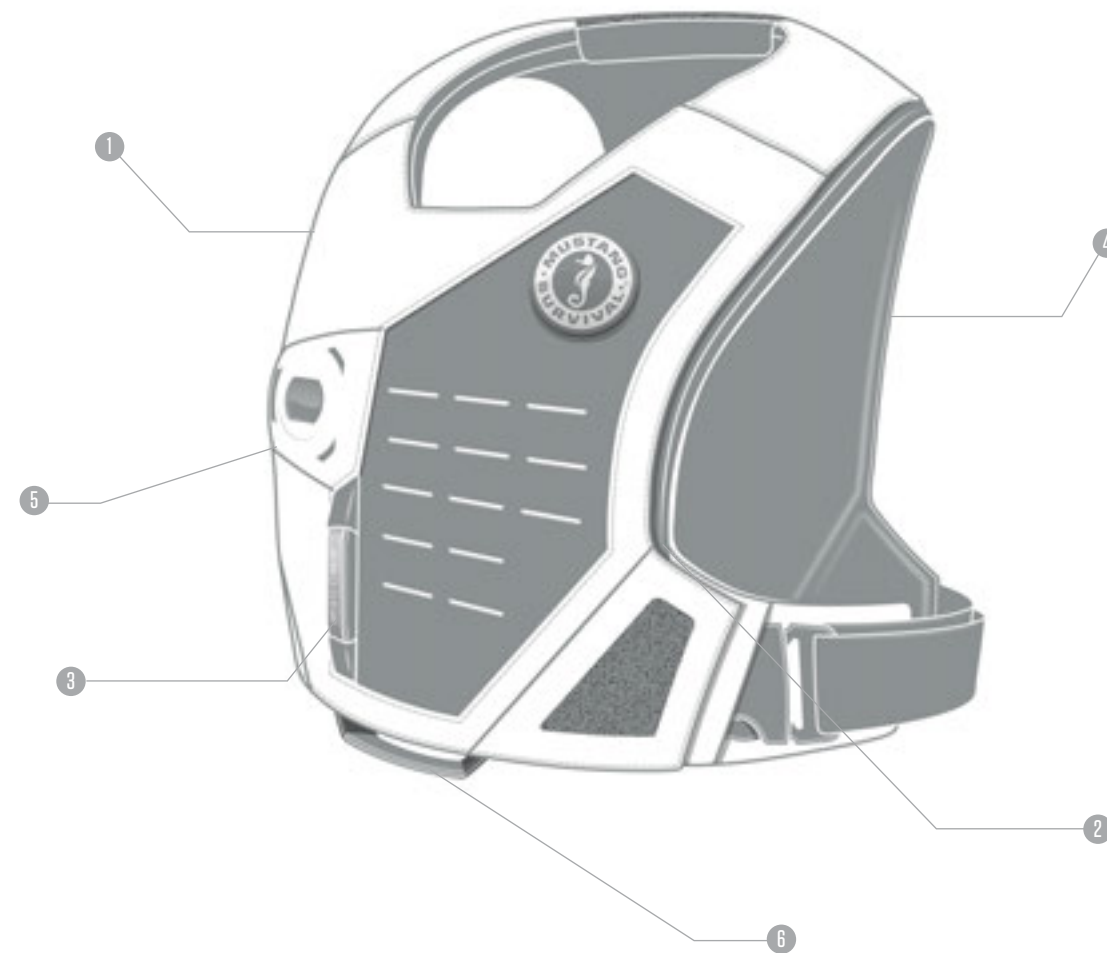


EP 38 INFLATABLE OCEAN RACING VEST

WITH A REVOLUTIONARY, LOW PROFILE CHASSIS THE EP 38 INFLATABLE RACE VEST IS ENGINEERED FOR THE ELITE OCEAN RACER AND BUILT FOR BREAKING RECORDS.



- 1. Integrated sailing harness with soft tie-in
- 2. Leg straps shaped for ease-of-access
- 3. 360 degree motion for high output grinding and sail changes



- 1. Low profile, lightweight chassis cut for active use
- 2. Membrane Inflation Technology™ (M.I.T™) reduces weight and increases flexibility
- 3. Discreet manual inflation handle prevents snags
- 4. Back mounted, storable spray hood
- 5. Hydrostatic Inflation Technology (HIT™) only inflates upon immersion
- 6. MOLLE platform panel is accessory ready for custom configuration of your gear

EP OCEAN RACING OUTERWEAR

ENGINEERED FROM EXPERIENCE AND BUILT TO LAST, THE EP OCEAN RACING RANGE OF WATERPROOF, BREATHABLE PERFORMANCE OUTERWEAR DEFINES THE NEW DRY FOR THE WORLD'S ELITE OCEAN RACERS; GIVING THEM THE ENDURANCE AND EDGE NEEDED TO WIN.



MUSTANG SURVIVAL / OCEAN RACING OUTERWEAR TECHNOLOGY

MUSTANG SURVIVAL HAS BEEN BUILDING LEADING DRY SOLUTIONS FOR MILITARY, COAST GUARD, AND WATER RESCUE PROFESSIONALS FOR DECADES. THIS EXPERTISE, ALONG WITH THE USE OF MILITARY GRADE FABRICS, AND A FOCUS ON MAXIMIZING WATERPROOFNESS, BREATHABILITY, AND DURABILITY, HAS ALLOWED US TO BUILD THE WORLD'S DRIEST, TOUGHEST PERFORMANCE OUTERWEAR FOR THE ELITE OF OCEAN RACING.

MIL SPEC 6.5™ WITH GORE-TEX® FABRICS

MIL SPEC 6.5™ with GORE-TEX® fabric is the most rugged waterproof, breathable shell available and, to date, has only been used in our coast guard and military products.

Now, after years of testing, we're exclusively bringing it to ocean racers in our range of EP 6.5 outerwear.



AQUASEAL®

Designed in conjunction with industry leading YKK zipper manufacturer, this smooth, strong, yet flexible and easy to operate, zipper creates a waterproof seal without the bulk of extra fabric flaps and heavy zippers.

Cohæsive™ EMBEDDED COMPONENTS

The intuitive Cohæsive™ streamlined system of embedded components manages internal adjustments, simplifying and improving the act of cinching, and because they are embedded, they are as strong as the material around them.

CLOSED COMFORT SYSTEM™

The CCS™ Adjustable Exoskin® Neck Seal was engineered for water rescue professionals. The patented Closed Comfort System can be worn loose to provide comfort and venting, and quickly cinched closed with one hand creating a watertight seal. The Exoskin® coating allows our seals to withstand weathering 5x longer than conventional uncoated latex seals.

SECURED KNEE PADDING™

Over years of making dry suits we've found that in active use, things shift. Our adjustable tabs on each knee allow secured positioning and ensure maximum comfort and alignment with the ergonomically molded EVA foam knee pads.

CORDURA® 1000D

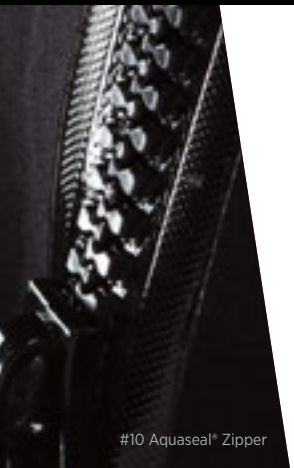
Cordura® 1000D Reinforcement. Made from a high density yarn for durability and resistance to abrasion, tears, and scuffs, our water-resistant reinforcement patch provides up to 10x the resistance to wear over standard reinforcement.

RAPID REPAIR TECHNOLOGY™

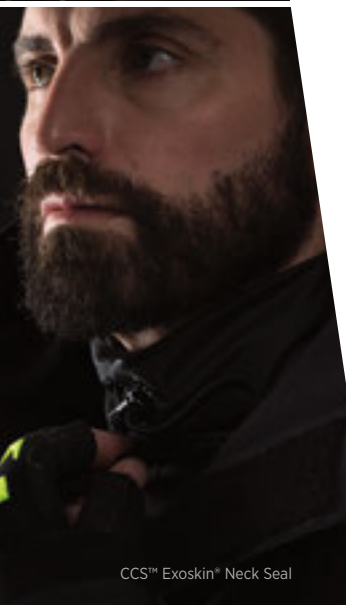
Developed for rescue and coast guard personnel operating in the field, our repair technology enables self-replacement of neck and wrist seals as well as repair of small leaks in an hour or less.

	MIL SPEC 6.5™ WITH GORE-TEX® FABRICS	AQUASEAL®	Cohæsive™ EMBEDDED COMPONENTS	CLOSED COMFORT SYSTEM™	SECURED KNEE PADDING™	CORDURA® 1000D	RAPID REPAIR TECHNOLOGY™
MSD500 EP 6.5 OCEAN RACING DRY SUIT	MIL6.5	AQS	CEC	CCS	SKP	C1000D	RRT
MJ6510 EP 6.5 OCEAN RACING JACKET	MIL6.5	AQS	CEC			C1000D	RRT
MJ6520 EP 6.5 OCEAN RACING PRO SMOCK	MIL6.5		CEC	CCS		C1000D	RRT
MP4500 EP 6.5 OCEAN RACING SALOPETTES	MIL6.5	AQS			SKP	C1000D	
MJ6500 EP LITE OCEAN RACING SPRAY SMOCK			CEC	CCS		C1000D	





#10 Aquaseal® Zipper



CCS™ Exoskin® Neck Seal



Integrated Suspenders

EP 6.5 OCEAN RACING DRY SUIT
 THIS ONE PIECE SUIT KEEPS YOU DRIER LONGER IN THE MOST CHALLENGING OCEAN CONDITIONS.

ENDURANCE DRY™

Engineered using MIL SPEC 6.5™ with GORE-TEX® fabrics and an Aquaseal® waterproof zipper, this Dry Suit offers complete waterproof, breathable protection. Fully seam sealed and with a waterproof high-vis hood, breathable waterproof socks, and adjustable neoprene seals, nothing gets in.

ARMORED CONSTRUCTION™

Built with breathable military-grade fabrics and Cordura® 1000D reinforcements in constantly abused areas, this hard-wearing dry suit does not need to be stowed away for only the most extreme conditions.

ADAPTIVE COMFORT™

This constant-wear suit has been designed for active use. The multiple adjustment points, including our CCS™ Exoskin® Neck Seal, allow for ease of adjusting fit as conditions dictate and padding in the knees, minimal sock seems, and fleece lining remove troublesome spots.

RESPONSIVE FIT™

Based on a dry suit platform and sizing system designed for the US Coast Guard and Military personnel, this active-duty suit works with you allowing the job to be done unencumbered with articulated elbows, Cohesive™ cinch adjusters, integrated suspenders, and a waist cinch.



- MIL 6.5
- AQS
- CEC
- CCS
- SKP
- C1000D
- RRT

MSD500/ EP 6.5 OCEAN RACING DRY SUIT COLOR/ BLACK 13 ■ MOBILITY BASED SIZING™ / S M L XL XXL



MIL SPEC 6.5™ WITH
GORE-TEX®
 FABRICS

ADDITIONAL FEATURES:
 FACE SHIELD, COLLAR WITH CINCH,
 CHEST REFLECTIVE POCKETS, CARGO
 POCKET WITH WINDOW, REINFORCED
 HANGING LOOPS, KNIFE ATTACHMENT,
 SLIT SLEEVE OVER-CUFF, REFLECTIVE
 POCKETS, RETROREFLECTIVE AND
 PHOTOLUMINESCENT NAMEPLATE
 AND PATCHES, TEXTURED GRIP TABS.

MSD500/EP 6.5
 OCEAN RACING DRY SUIT

EP 6.5

MIL SPEC 6.5™ WITH
GORE-TEX®
FABRICS

ADDITIONAL FEATURES:
FACE SHIELD, COLLAR WITH
CINCH, REFLECTIVE CHEST
AND SLEEVE POCKETS, REINFORCED
HANGING LOOP, SLIT SLEEVE OVER-
CUFF, RETROREFLECTIVE AND
PHOTOLUMINESCENT NAMEPLATE
AND PATCHES, TEXTURED GRIP
TABS.



MJ6520/
EP 6.5 OCEAN RACING
PRO SMOCK

MIL 6.5 CEC CCS C1000D RRT

MJ6520/ EP 6.5 OCEAN RACING PRO SMOCK COLOR/ BLACK 13 MOBILITY BASED SIZING™ / S M L XL XXL

EP 6.5 OCEAN RACING PRO SMOCK
AVAILABLE EXCLUSIVELY TO PRO
TEAMS AND BUILT FOR THE MOST
EXTREME OCEAN CONDITIONS ON
THE PLANET

ENDURANCE DRY™

Built for the most demanding conditions over long periods, the Pro Smock uses MIL SPEC 6.5™ with GORE-TEX® fabrics, a CCS™ Exoskin® neck seal, neoprene wrist seals, and a waterproof high-vis hood and Sharkskin Neoprene Waist Gasket to stop water getting in from any angle.

ARMORED CONSTRUCTION™

Engineered to endure extreme use race after race with breathable military-grade fabrics, Cordura® 1000D reinforcements, and our Rapid Repair Technology™ to allow for quick fixes.

ADAPTIVE COMFORT™

Utilizing the CCS™ neck seal for quick lock-down and easy release, along with one-handed adjustment of the Cohesive™ cinch adjusters in critical areas, this smock provides for instant adjustment as conditions require.

RESPONSIVE FIT™

Cut for active duty with an extra-long length, articulated elbows, and inclusion of only the essential features to enhance breathability and eliminate interference when integrated with our salopettes.



Sharkskin Neoprene
Waist Gasket

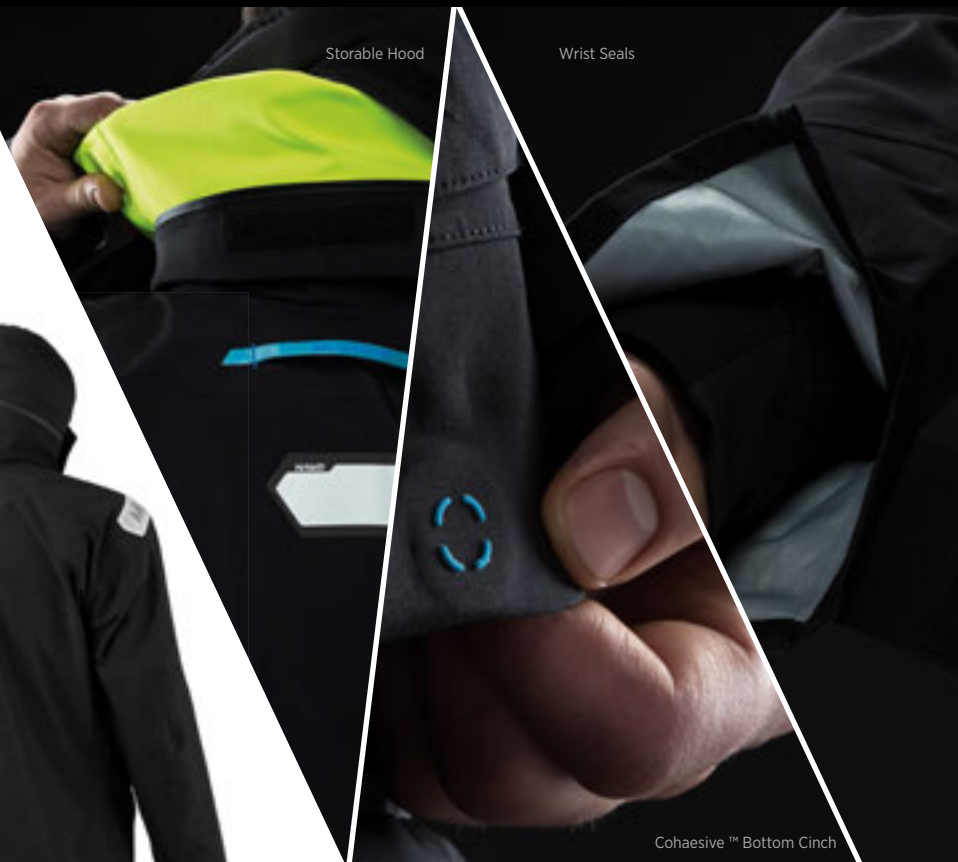


Hi-Visibility Features



Slit Sleeve Over-Cuff

EP 6.5 OCEAN RACING JACKET
 A MINIMALIST DESIGN WITH EMPHASIS ON FEATURES
 AND FABRICS THAT KEEP YOU DRY AT THE CORE FOR
 LONGER.



ENDURANCE DRY™
 With a high-vis GORE-TEX® hood, face shield, cinch collar and adjustable Exoskin® wrist cuffs, this windproof and breathable waterproof jacket, built with MIL SPEC 6.5™ with GORE-TEX® fabrics, keeps your core completely dry for days on end.

ARMORED CONSTRUCTION™
 This jacket will stand up to the frequent use it will encounter with military-grade fabrics and Cordura® 1000D reinforcements. The reinforced hanging loop protects the jacket from damage when hanging and can even take the weight of an arrested fall.

ADAPTIVE COMFORT™
 Utilizing the Cohesive™ cord lock system for adapting fit, a 2-way waterproof Aquaseal® zipper, and a soft fleece lined neck for warmth and chafe reduction; uncomfortable jackets will no longer be an excuse.

RESPONSIVE FIT™
 Mobility Based Sizing™ provides superior range of motion without the bulk of a traditional jacket and articulated elbows, a bottom cinch, and slit sleeve cuff openings offer fine-tuning fit.

- MIL 6.5
- AQS
- CEC
- C1000D
- RRT

MJ6510/EP 6.5 OCEAN RACING JACKET COLOR/BLACK 13 ■ MOBILITY BASED SIZING™/ S M L XL XXL



MIL SPEC 6.5™ WITH
GORE-TEX®
 FABRICS

ADDITIONAL FEATURES:
 CARGO, REFLECTIVE CHEST AND SLEEVE POCKETS, SLIT SLEEVE OVER-CUFF, REINFORCED HANGING LOOPS, TEXTURED GRIP TABS, RETROREFLECTIVE AND PHOTOLUMINESCENT NAMEPLATE AND PATCHES.

EP 6.5

GORE-TEX® Pro

ADDITIONAL FEATURES:
REFLECTIVE CHEST AND SLEEVE
POCKETS, INTERNAL ADJUSTABLE
CUFFS AND SLIT SLEEVE OVER-CUFF,
RE-ENFORCED HANGING LOOPS,
TEXTURED GRIP TABS, RETROREFLECTIVE
AND PHOTOLUMINESCENT NAMEPLATE.



GORE-TEX®
Pro

CEC

CCS

C10000

MJ6500/EP LITE OCEAN RACING SPRAY SMOCK

COLOR/ BLACK 13

MOBILITY BASED SIZING™/ S M L XL XXL



CCS™ Adjustable Exoskin® Neck Seal



Adjustable Cuffs

EP LITE OCEAN RACING SPRAY SMOCK A STRIPPED-DOWN DESIGN WITH WATERPROOF PERFORMANCE FOR HIGH ACTIVITY USE

ENDURANCE LITE™

This GORE-TEX® Pro minimalist waterproof smock lets you work hard and stay dry. Unlike traditional waist gaskets, our Sharkskin Neoprene Waist Gasket has been glued in to create a watertight seal.

ARMORED CONSTRUCTION™

Fully seam sealed GORE-TEX® Pro and 1000D Cordura® reinforcements create a durable, high-activity smock for when you need to really get to work.

ADAPTIVE COMFORT™

With the quick adjusting capabilities of CCS™ neck seals and Exoskin® adjustable cuffs, venting can be locked down when conditions turn wet, yet activity remains high.

RESPONSIVE FIT™

The enhanced athletic cut of the Spray Smock streamlines from shoulder to waist allowing the waist gasket to be fully waterproof through the addition of gluing. Adjustable waist tabs allow for further refinement of fit.

Sharkskin Neoprene Waist Gasket

OCEAN RACING



2-Way Aquaseal® Zipper

Salopette Shoulders

EP 6.5 OCEAN RACING SALOPETTES
SIMPLIFIED SALOPETTE DESIGN FOR A SEAMLESS, FULLY WATERPROOF SOLUTION WHEN INTEGRATED WITH THE EP JACKET OR SMOCKS.



ENDURANCE DRY™
Built with MIL SPEC 6.5™ with GORE-TEX® fabrics and Aquaseal® zipper for complete waterproofness when integrated with the jacket or smocks.

ARMORED CONSTRUCTION™
For the hardest wearing part of the outerwear system, military-grade fabrics were a must and 1000D reinforcements in the seat and knees provide 10X the durability over standard reinforcement.

ADAPTIVE COMFORT™
When worn with our jacket or smock, the low profile salopette shoulders provide no interference and superior comfort over bib style pants. The 2-way Aquaseal® zipper allows for flexibility in venting and, because of its waterproofness, removes excess fabric found with traditional zippers.

RESPONSIVE FIT™
Removing excess, yet providing full range of motion, is the basis of our Mobility Based Sizing™ and a double waist cinch pulls the front of the salopettes in and out of the way when working bent over.



MP4500/EP OCEAN RACING SALOPETTES COLOR/BLACK 13 ■ MOBILITY BASED SIZING™/S M L XL XXL



MIL SPEC 6.5™ WITH
GORE-TEX®
FABRICS

ADDITIONAL FEATURES:
REFLECTIVE CHEST POCKET,
CARGO POCKET WITH WINDOW,
REINFORCED HANGING
LOOPS, KNIFE ATTACHMENT,
RETROREFLECTIVE AND
PHOTOLUMINESCENT NAMEPLATE.

MP4500/EP 6.5 OCEAN RACING SALOPETTES

REGULATE BASE LAYERS

REGULATE BASE LAYERS WITH FUSION MERINO™; COMBINES THE WARMTH OF WOOL WITH QUICK-DRYING SYNTHETICS FOR OPTIMAL THERMAL PERFORMANCE ON THE WATER.



MSL609/REGULATE 230 BASE LAYER LONG SLEEVE TOP MSL610/REGULATE 230 BASE LAYER BOTTOM COLOR/BLACK 13 ■ MOBILITY BASED SIZING™/S M L XL XXL

REGULATE BASE LAYERS 230

OUTPERFORMS PURE-WOOL OR SYNTHETIC GARMENTS ON THE WATER SO YOU CAN STAY DRY AND WARM ALL DAY.*



AQUA ENDURANCE™
The quick-drying synthetic component of our base layers wicks moisture away from skin and regulates temperature during heavy activity, and by being fused with merino wool, superior thermal protection is provided even when soaked or resting.

ADAPTIVE COMFORT™
Regulate keeps you comfortable and focused on the task at hand with flat-lock seam construction and the natural odor control and comfort of wool and quick drying properties of synthetics.

PERFORMANCE REGULATE™
Engineered to integrate seamlessly with other Mustang Survival outerwear with different weights and cuts to match conditions.

RESPONSIVE FIT™
Compatible with Mobility Based Sizing™ to ensure fit with our EP outerwear. The top includes a zipper and collar and stretch synthetics in the bottoms reduces wear and retains fit.

*Fusion Merino outperforms pure wool in regulating temperature when active and beats pure synthetics or cotton in heat retention when wet. For test results and tech specs, go to www.mustangsurvival.com/fusion



MSL609/610
BASE LAYERS

230



MSL607/REGULATE 175 BASE LAYER LONG SLEEVE TOP MSL608/REGULATE 175 BASE LAYER BOTTOM COLOR/GRAY 9 ■ MOBILITY BASED SIZING™/S M L XL XXL

REGULATE BASE LAYERS 175

OUTPERFORMS PURE-WOOL OR SYNTHETIC GARMENTS ON THE WATER SO YOU CAN STAY DRY AND WARM ALL DAY.*



AQUA ENDURANCE™

The quick-drying synthetic component of our base layers wicks moisture away from skin and regulates temperature during heavy activity, and by being fused with merino wool, superior thermal protection is provided even when soaked or resting.

ADAPTIVE COMFORT™

Regulate keeps you comfortable and focused on the task at hand with flat-lock seam construction and the natural odor control and comfort of wool and quick drying properties of synthetics.

RESPONSIVE FIT™

Compatible with Mobility Based Sizing™ to ensure fit with our EP outerwear. The top features a crew neck to minimize interference and the addition of stretch synthetics in the bottoms reduces wear and retains fit.

PERFORMANCE REGULATE™

Engineered to integrate seamlessly with other Mustang Survival outerwear with different weights and cuts to match conditions.

*Fusion Merino outperforms pure wool in regulating temperature when active and beats pure synthetics or cotton in heat retention when wet. For test results and tech specs, go to www.mustangsurvival.com/fusion

607/608 REGULATE 175 BASE LAYERS

REGULATE 175

EP 3250/ GLOVES

SPECIFICALLY DESIGNED FOR EXTREME OCEAN RACING, THE EP 3250 OCEAN RACING GLOVES PERFORM WHEN WET, STAND UP TO CONSTANT ABUSE, AND PROVIDE SUPERIOR PROTECTION.





EP 3250 OCEAN RACING FULL FINGER GLOVE
 A RUGGED FULL FINGER GLOVE BUILT FOR WARMTH AND PROTECTION IN THE WET, ABRASIVE ENVIRONMENT OF OCEAN RACING.



AQUA ENDURANCE™
 A glove engineered for wet work with synthetic leather on the fingers and a silicon grip closure tucked under wrist to avoid snags.

ARMORED CONSTRUCTION™
 Using a gun cut pattern and PVC overlay on the palms we've created a serious work glove with a heavy-duty, flexible construction that stands up to constant abrasion.

RESPONSIVE FIT™
 Cut to reduce bulk, promote articulation, and work with seals and watches, this glove stretches to a tighter fit with use.

PERFORMANCE REGULATE™
 Molded 3mm neoprene on the back of the hand helps keep warmth in and water out as well as providing impact protection when grinding.

MAG005/3250 EP OCEAN RACING FULL FINGER GLOVES COLOR/BLACK + FLUORESCENT YELLOW GREEN 263 ■■■ SIZING/S M L XL



EP 3250 OCEAN RACING OPEN FINGER GLOVE

A SOLID OPEN FINGER GLOVE BUILT FOR BREATHABILITY AND PROTECTION IN THE HIGH ENERGY, HIGH SPEED ENVIRONMENT OF OCEAN RACING.

AQUA ENDURANCE™

A glove engineered for wet work with synthetic leather on the fingers and a silicon grip closure tucked under wrist to avoid snags.

PERFORMANCE REGULATE™

Breathable corduroy nylon on the back of the hand and an open-finger design keep sweat away and promote grip.

ARMORED CONSTRUCTION™

Using a gun cut pattern, PVC overlay on palms, and molded knuckle protection, we've created a serious work glove with rugged construction that stands up to constant abrasion.

RESPONSIVE FIT™

Cut to reduce bulk, promote articulation, and work with seals and watches, this glove stretches to fit with use.

MAG004/ PROTECT EP 3250 OCEAN RACING OPEN FINGER GLOVES

COLOR/ BLACK + FLUORESCENT YELLOW GREEN 263 ■■■ SIZING/ S M L XL



MAG004/ EP 3250
OCEAN RACING
OPEN FINGER
GLOVE

3250

GEAR HAULERS/ GREENWATER

BUILT FOR TRANSPORT AND TO
WITHSTAND EXTREME CONDITIONS,
THESE ARMORED, WATERPROOF DECK
BAGS KEEP GEAR DRY AND SECURE IN
TRANSIT, ON DECK, OR DOWN BELOW.





MA2611/65L GREENWATER WATERPROOF DECK BAG

GREENWATER 35L + 65L WATERPROOF DECK BAGS
 BUILT TO LAST, THESE ARMORED WATERPROOF DECK BAGS EASILY STRAP DOWN TO KEEP YOUR GEAR DRY AND SECURE THROUGH THE TOUGHEST CONDITIONS.

AQS MA2611/ 35L GREENWATER WATERPROOF DECK BAG COLOR/ BLACK 13 ■ SIZING/ 35L

35L



ENDURANCE DRY™
 Absolutely watertight, with a 420 denier Hypalon shell and the same Aquateal® zipper used in our dry suits, to keep your gear dry when everything else isn't.

ARMORED CONSTRUCTION™
 Reinforced, rubberized handles are designed to stand up to rough treatment.

RESPONSIVE DESIGN™
 Removable padded shoulder strap makes it comfortable to carry, even when crammed with heavy gear.

MODULAR ORGANIZATION™
 Rectangular construction lets you pack it tighter, and full perimeter tie-downs guarantee it's stowed securely.

65L



AQS MA2612/ 65L GREENWATER WATERPROOF DECK BAG COLOR/ BLACK 13 ■ SIZING/ 65L



GEAR HAULERS/ BLUEWATER

THESE GEAR HAULERS CAN TAKE YOU FROM A DAY ON THE WATER TO A TRIP AROUND THE WORLD. THE AQUA ENDURANCE™ WET/DRY SYSTEM KEEPS CRITICAL GEAR DRY AND WET GEAR SECURE ALLOWING FOR EASY TRANSPORT FROM BOAT TO PLANE TO HOME.





MA26XX/ BLUEWATER
WATERPROOF GEAR HAULER

55L

BLUEWATER 55L GEAR HAULER
THIS TRAVEL-READY GEAR HAULER IS ENGINEERED FOR LONG HAUL ON LAND, AIR, AND SEA.



Expandable Wet Pocket

Tuck Away Waist Belt

AQUA ENDURANCE™

Seam-sealed expandable wet pocket with urethane-coated zippers separates wet from dry and keeps valuables safe.

ARMORED CONSTRUCTION™

210 denier TPU coated ripstop nylon shell and TPU coated webbing grab handles and clip points designed for hard use.

RESPONSIVE DESIGN™

Travel-ready size with foam back stiffener, compression straps, sternum strap and tuck away shoulder straps and waist belt for active use comfort.

MODULAR ORGANIZATION™

Expandable seam-taped wet gear pocket, Hypalon MOLLE panel, internal organization pocket with key clip, and exterior side pocket to keep your gear organized.



Roll top, Waterproof Compartment

Exterior Wet Storage

30L

BLUEWATER 30L GEAR HAULER

PERFECT FOR GETTING THE ESSENTIAL GEAR TO TRAINING DAYS IN THE HARBOR OR EXTENDED OVERNIGHT EXCURSIONS.

AQUA ENDURANCE™
Urethane-coated zippers keep your wet gear away from your dry valuables with a roll-top waterproof compartment to keep laptops and other valuables safe.

ARMORED CONSTRUCTION™
210 denier TPU coated ripstop nylon shell and TPU-coated handles and clip points stand up to rough treatment.

RESPONSIVE DESIGN™
Stay quick and unencumbered with the secure sternum strap, comfort-foam back stiffener, compression system, and stow-away waist belt.

MODULAR ORGANIZATION™
Put everything in its place with the endlessly configurable Hypalon MOLLE panel, exterior wet storage, internal organization system, and full-access opening.



MA2608/BLUEWATER 30L GEAR HAULER COLOR/GRAY 9 ■ SIZING/30L



MA2607/BLUEWATER 15L GEAR HAULER COLOR/GRAY 9 ■ SIZING/15L

15L

BLUEWATER 15L HYDRATION PACK

TRAVEL LIGHT AND FAST WITH THIS HYDRATION-READY PACK THAT'S DESIGNED TO KEEP WET AND DRY APART.



AQUA ENDURANCE™
Urethane-coated zippers keep your dry valuables safe. Hydration-ready sleeve built in.

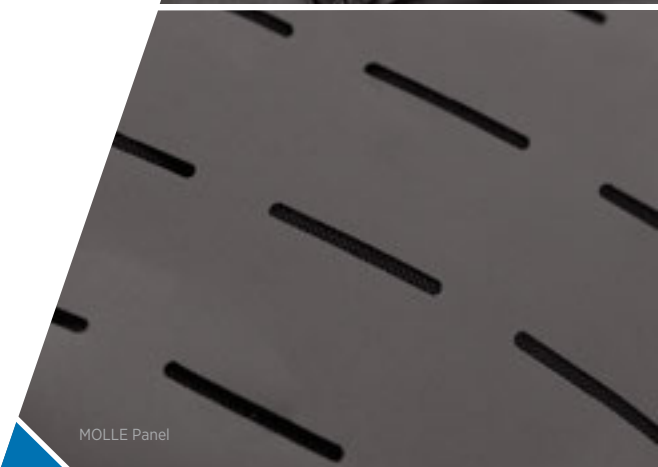
ARMORED CONSTRUCTION™
Rubberized 210 denier ripstop nylon shell and TPU coated clip points stand up to rough handling.

MODULAR ORGANIZATION™
Put everything in its place with the endlessly configurable Hypalon MOLLE panel and internal organization system.

RESPONSIVE FIT™
Stay quick and unencumbered with the secure sternum strap, comfort-foam back stiffener, and slim-fit shape.



Hydration-Ready Sleeve



MOLLE Panel



Internal Organization System



GEAR HAULERS/ BLUEWATER ROLL TOP DRY BAGS COLOR/ GRAY 9 ■ SIZING/ MA2601 5L / MA2602 10L / MA2603 15 L / MA2604 20L / MA2605 35L

BLUEWATER ROLL TOP DRY BAGS

WATERPROOF AND DURABLE STORAGE CUBES ENGINEERED TO KEEP YOUR GEAR ORGANIZED AND DRY.

ENDURANCE DRY™

210 denier ripstop nylon is TPU coated for maximum waterproofing.

ARMORED CONSTRUCTION™

Fully welded construction for unmatched durability.

MODULAR ORGANIZATION™

Waterproof label window so you can see what's inside without letting in the elements.

RESPONSIVE DESIGN™

Unique cube design packs together tightly and won't roll around on deck.

MA26XX/ BLUEWATER
WATERPROOF GEAR HAULERS/55L/30/15

BLUEWATER

MOBILITY BASED SIZING™

MOBILITY BASED SIZING™ ALLOWS OUR PRODUCT DESIGNERS TO REDUCE BULK AND INCREASES RANGE OF MOTION THROUGHOUT OUR RANGE OF SIZES. THIS SIZING PLATFORM WAS DEVELOPED BASED ON ANTHROPOMETRIC DATA FROM 2,500 NORTH AMERICAN 3-D BODY SCANS, RANGE OF MOTION TESTING, AND USER EVALUATIONS. TO FIND OUT MORE ABOUT MOBILITY BASED SIZING VISIT WWW.MUSTANGSURVIVAL.COM/MOBILITY

ABOUT MUSTANG SURVIVAL

FOR 50 YEARS MUSTANG SURVIVAL HAS BEEN ENGINEERING HIGH-PERFORMANCE MARINE GEAR FOR MILITARY, COAST GUARD, AND RESCUE PERSONNEL. WITH A FOCUS ON APPLIED RESEARCH AND FIELD-TESTING, WE'RE COMMITTED TO THE PROTECTION AND ENHANCEMENT OF THOSE WHO PUSH THEMSELVES TO EXTREMES. WE BUILD GEAR THAT SAVES LIVES AND FUELS EXPLORATION.

SAVING LIVES SINCE 1967.

www.mustangsurvival.com



TF. 1 800 526 0532 | F. 1 888 676 5014 | E. custserv@mustangsurvival.com | www.mustangsurvival.com
MUSTANG SURVIVAL AND SEAHORSE DESIGN ARE ALL REGISTERED TRADEMARKS OF MUSTANG SURVIVAL ULC.
A BRAND OF THE SAFARILAND GROUP ©2016 SAFARILAND, LLC 052813

