

# WOODEN PLAYSET PROJECT

DESIGNED AND DRAFTED BY:

CHIP HARPER  
[www.hot4cad.com](http://www.hot4cad.com)

CONSTRUCTED BY:

MICHAEL SHANE LOVE  
HAYESVILLE, NC



COPYRIGHT 2007 BY G.L. HARPER  
[www.hot4cad.com](http://www.hot4cad.com)  
ALL RIGHTS RESERVED.

## GENERAL DIRECTIONS:

NOTE: IT IS ASSUMED THAT ANYONE UNDER TAKING THIS PROJECT HAS SOME CONSTRUCTION EXPERIENCE OR APPTITUDE FOR SUCH PROJECTS. AS SUCH COMPLETE STEP BY STEP INSTRUCTIONS ARE NOT PRESENTED.

PURCHASE AND TRANSPORT MATERIALS – YOU WILL NEED A TRUCK, IF YOU DON'T OWN ONE YOU CAN USUALLY RENT ONE FOR THE DAY AT THE SAME STORE.

CUT AND MARK ITEMS FROM CUT LIST.

LAYOUT AND DRILL THE CARRIAGE BOLT OPENINGS ON THE 2x8'S (ITEMS B, C).

LAYOUT AND DRILL THE CARRIAGE BOLT OPENINGS ON THE 2x4'S (ITEMS D, E, J AND K).  
NOTE: ONLY THE TWO OUT SIDE 2X4'S (ITEM E WILL BE BOLTED, THE INSIDE PIECES (3) USE DECK SCREWS).

LAYOUT AND DRILL THE CARRIAGE BOLT OPENINGS ON THE 4x4'S (ITEM A).

ITEMS NOT FASTENED WITH CARRIAGE BOLTS ARE FASTENED WITH DECK SCREWS.

ASSEMBLE THE LEFT AND RIGHT SIDES, (2) END 4x4'S (ITEM A), 2x8 (ITEM C) AT BOTTOM, 2x4 AT MIDDLE (ITEM E), AND 2x4 (ITEM K) AT TOP.

WHEN YOU HAVE THE TWO SIDES LAYED OUT AND ASSEMBLED, STAND THEM UP (THIS IS WHERE YOU WILL NEED A LITTLE HELP) AND ADD THE MATCHING FRONT PIECE'S THEN THE BACK PIECES.

ADD THE CENTER 4x4'S TO THE STRUCTURE.

BUILD OUT THE DECK SUPPORTS AND DECKING. USE TWO DECK SCREWS AT THE EACH END OF THE DECK PIECES AND WHERE THE DECK PIECES CROSS A 2x4.

BUILD OUT THE SWING SUPPORT AND A-FRAME.

ASSEMBLE AND BUILD OUT THE BENCH (ITEMS M & N).

BUILD OUT THE TOP.

MOUNT THE SLIDE.

BUILD OUT THE REMAINING SIDE PIECES.

ADD THE HANDLES.

INSTALL THE SWING ITEMS.

PLACE THE PLASTIC AND FILL THE SAND BOX.

CUT MATERIALS LIST

A. 4"x4"x8' PT	REQ (5)
B. 2"x8"x5' PT	REQ (2)
C. 2"x8"x4'-9" PT	REQ (2)
D. 2"x4"x5' PT	REQ (2)
E. 2"x4"x4'-9"	REQ (5)
F. 5/4"x6"x5' DECK BOARD	REQ (6)
G. 5/4"x6"x5' DECK BOARD	REQ (2)
H. 5/4"x6"x5' DECK BOARD	REQ (2)
J. 2"x4"x5' PT	REQ (2)
K. 2"x4"x4'-9" PT	REQ (2)
L. 2"x4"x3' PT	REQ (22)
M. 2"x4"x10 1/2" PT & 2"x4"x1' PT	REQ (3)
N. 2"x4"x4'-2" PT	REQ (2)
P. 2"x4"x2'-6 1/4" PT	REQ (4)
Q. 2"x4"x4'-9" PT	REQ (4)
R. 2"x4"x2'-2 1/2" PT	REQ (2)
S. 2"x4"x4'-9" PT	REQ (1)
T. 2"x4"x4'-9" PT	REQ (2)
U. 2"x4"x4'-9" PT	REQ (2)
V. 4"x4"x8' PT	REQ (2)
W. 2"x4"x5'-4" PT	REQ (1) **
X. 4"x6"x12' PT	REQ (1)
Y. 4"x4"x7'-4 1/4" PT	REQ (1) **
Z. 2"x4"x20"	REQ (2)

\*\* VERIFY BEFORE CUT

LUMBER LIST

		<u>COST EA</u>	<u>TOTAL</u>
4"x4"x8' PT	REQ (8)	\$ 6.50	\$ 52.00
2"x8"x10' PT	REQ (2)	\$ 7.97	\$ 15.94
2"x4"x10' PT	REQ (21)	\$ 3.69	\$ 77.49
5/4"x6"x10'	REQ (5)	\$ 3.97	\$ 19.85
4"x6"x12'	REQ (1)	\$16.97	\$ 16.97

\$182.25

PARTS LIST

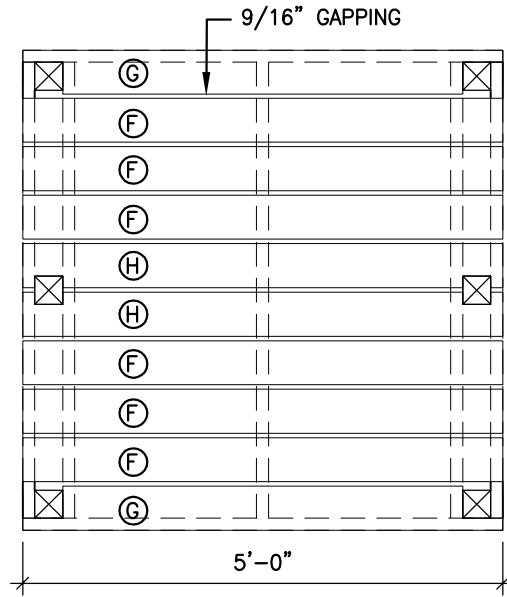
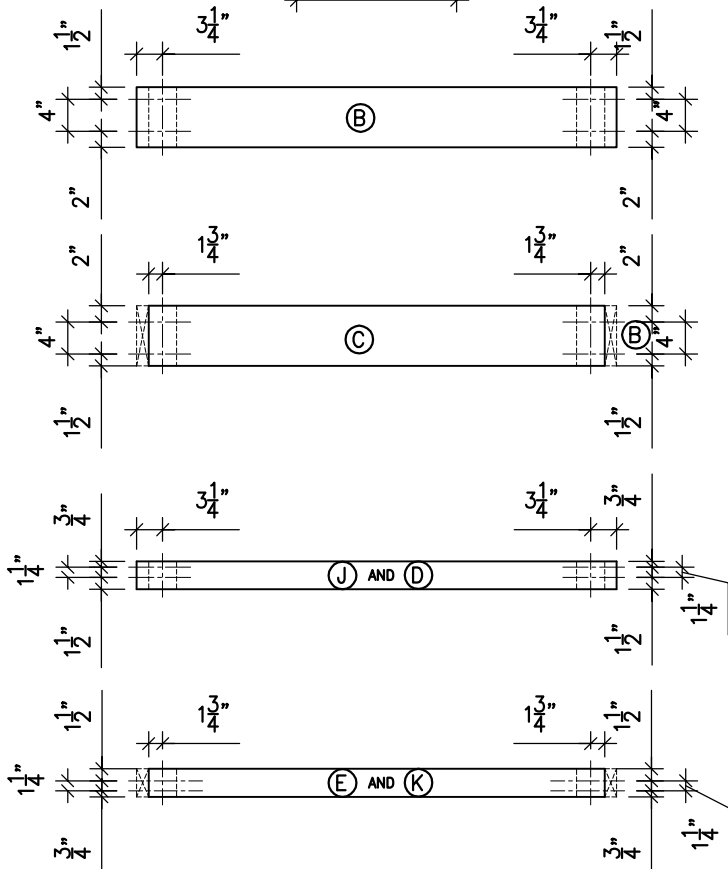
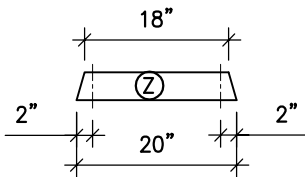
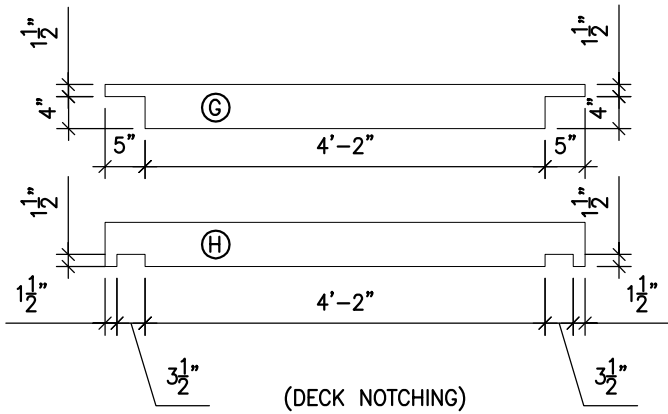
		<u>COST EA</u>	<u>TOTAL</u>
1. SWING SEAT P/N TB1502*	REQ (2)	\$14.97	\$ 29.94
2. OURIGGER SWING P/N TB1515*	REQ (1)	\$79.97	\$ 79.97
3. CHILDS SWING P/N TB1522*	REQ (1)	\$19.97	\$ 19.97
4. FRAME BRACKET P/N TB1510*	REQ (1)	\$11.97	\$ 11.97
5. KIT, CANOPY P/N TB1514*	REQ (1)	\$15.97	\$ 15.97
6. SAFETY HANDLE P/N TB1505*	REQ (2)	\$ 8.97	\$ 17.94
7. COOL WAVE SLIDE P/N TB1400*	REQ (1)	\$69.97	\$ 69.97
8. SIMPSON CAP P/N BCS2-2/4Z	REQ (1)	\$ 3.27	\$ 3.27
9. SWING HANGER P/N TB1509*	REQ (3)	\$ 5.97	\$ 17.91
10. 4 MIL 5'x5' PLASTIC	REQ (1)	\$ 9.98	\$ 9.98
11. QUIKRETE PLAY SAND 50#	REQ (21)	\$ 3.35	\$ 70.35
5'x5'x.5' = 12.5 cu ft    100#/cu ft			
12. DECK MATE PHILLIPS SQUARE DRIVE SCREWS			
8x2 1/2"	REQ (1)	\$25.97	\$ 25.97
13. GALVANIZED CARRIAGE BOLTS 5/16"x5"	REQ (60)	\$ 1.05	\$ 63.00
14. GALVANIZED 5/16" FLAT WASHER	REQ (60)	\$ .15	\$ 9.00
15. GALVANIZED 5/16" NUTS	REQ (60)	\$ .15	\$ 9.00

\$458.18

\* TIMBERBILT SWING N SLIDE PARTS  
www.swing-n-slide.com/timberbilt

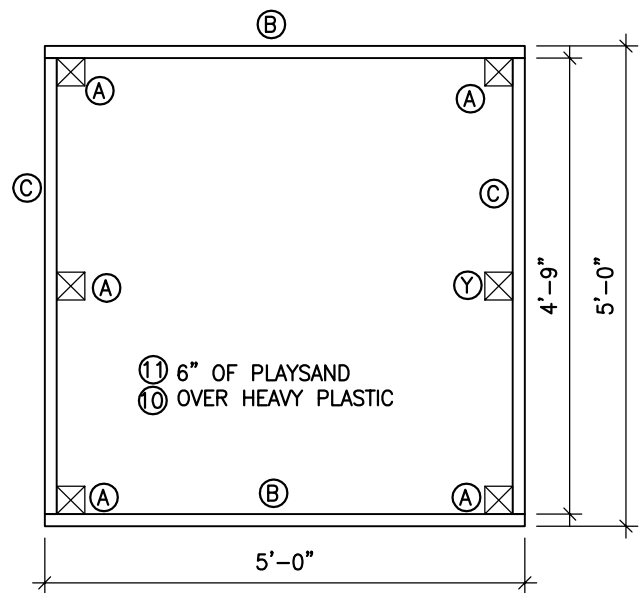
TOTAL LUMBER AND PARTS

\$636.43



## PLAN VIEW - DECK

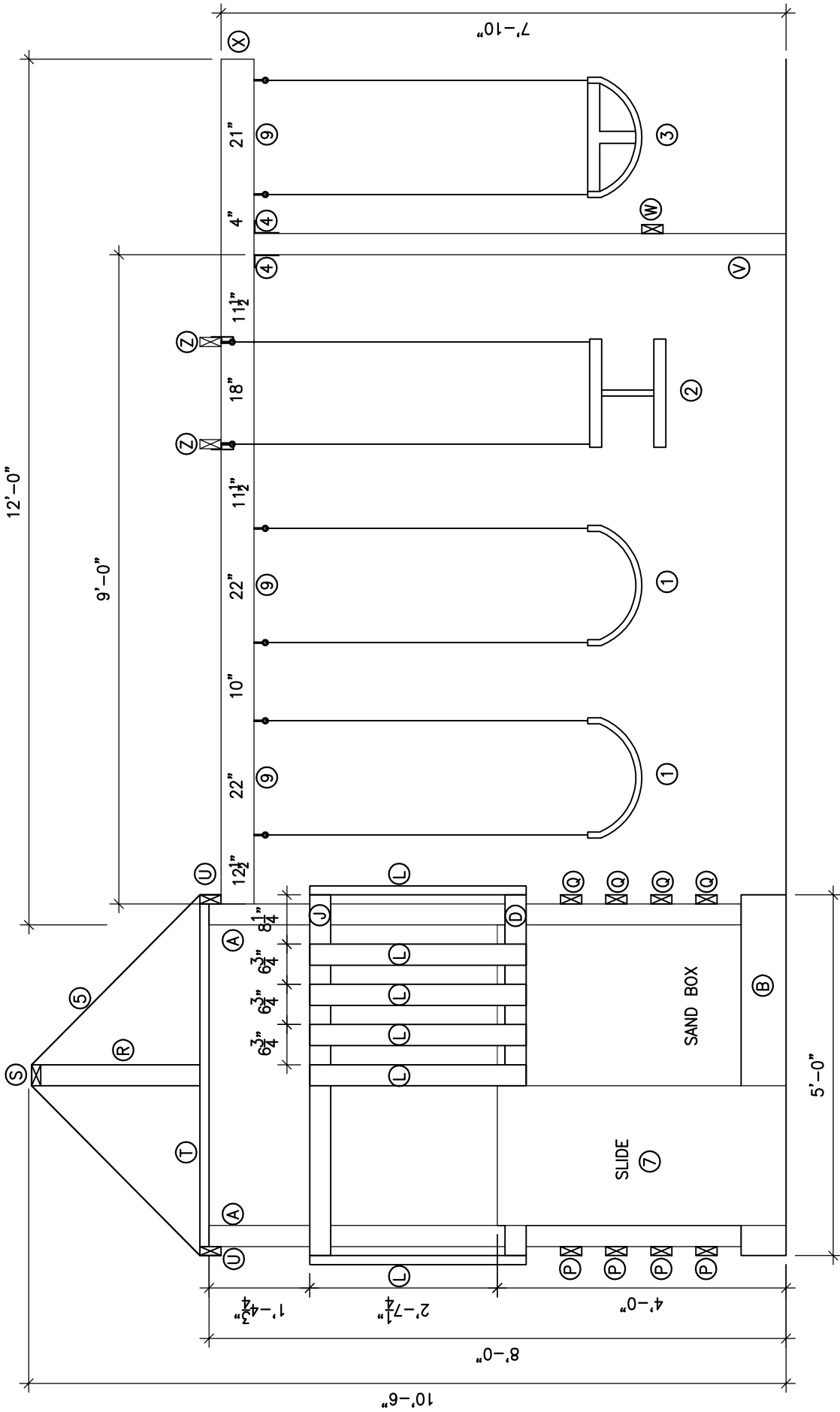
SCALE: 1/2" = 1'-0"



## PLAN VIEW - SANDBOX

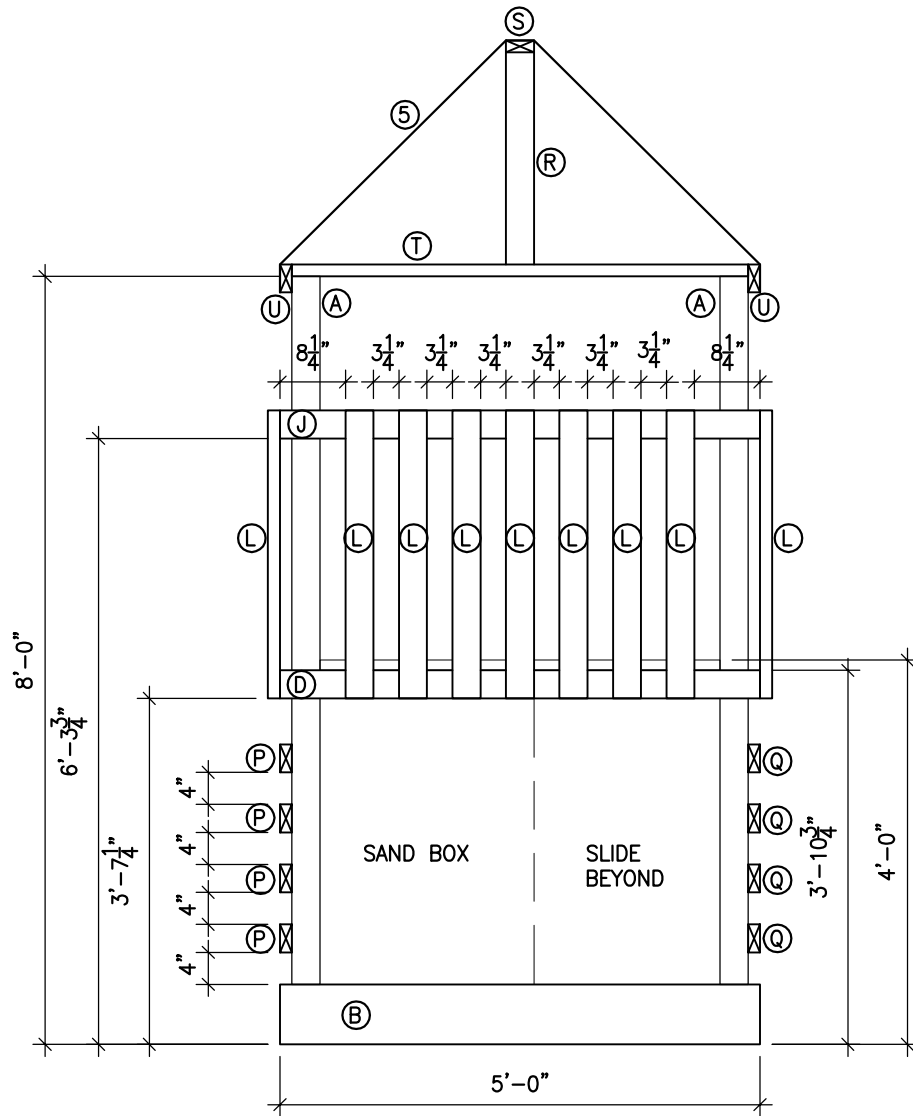
SCALE: 1/2" = 1'-0"





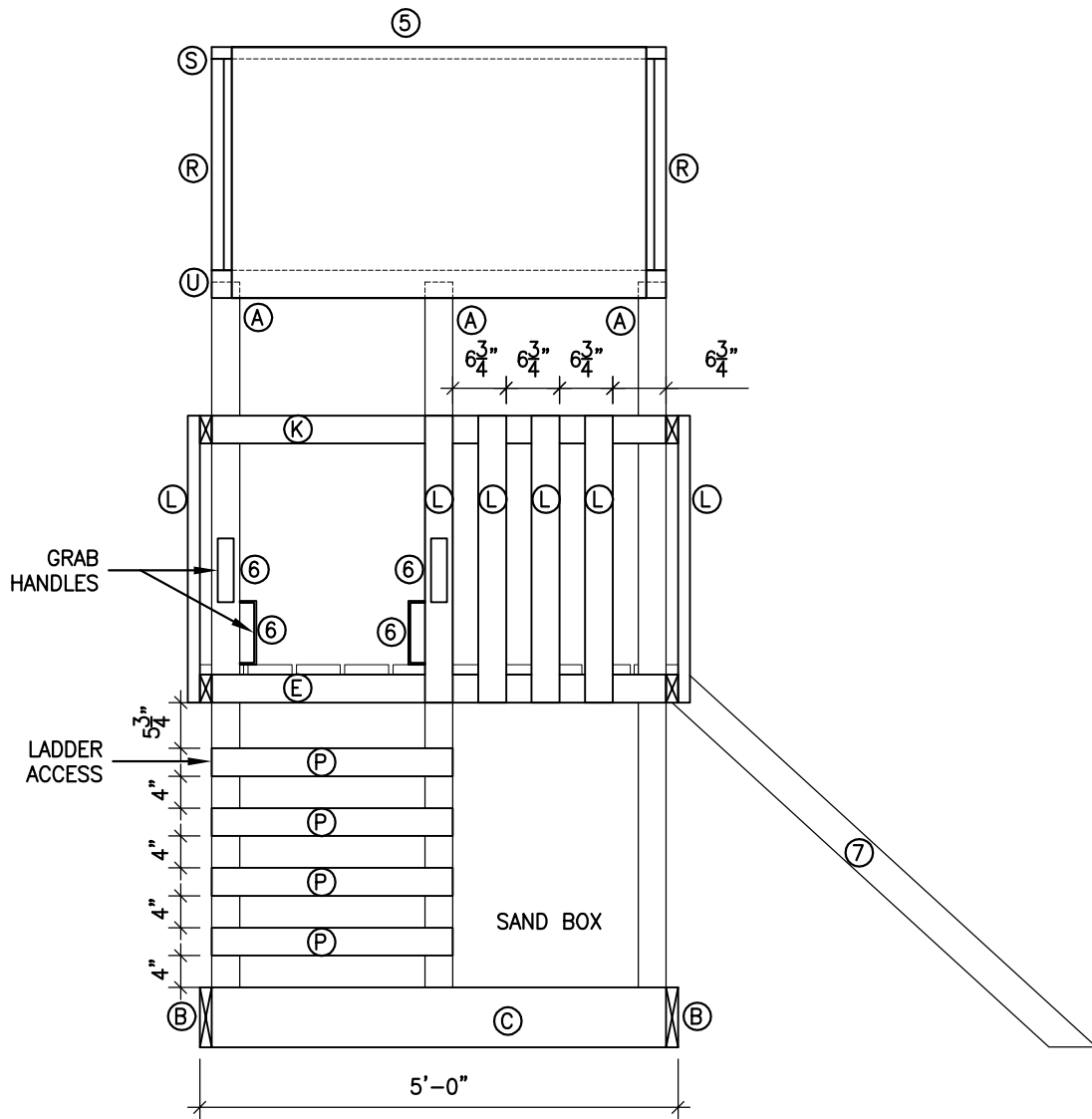
# FRONT ELEVATION

SCALE: 1/2" = 1'-0"



# REAR ELEVATION

SCALE: 1/2" = 1'-0"

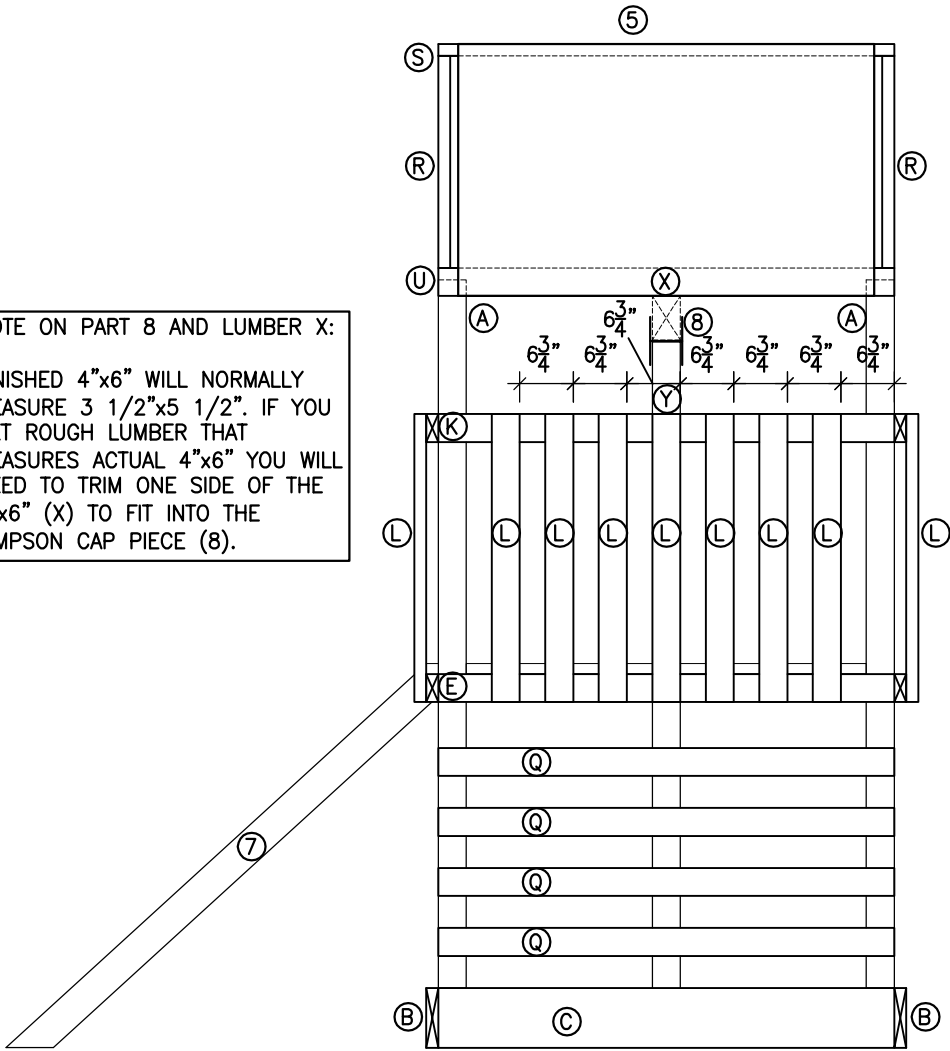


# LEFT ELEVATION

SCALE: 1/2" = 1'-0"



NOTE ON PART 8 AND LUMBER X:  
 FINISHED 4"x6" WILL NORMALLY  
 MEASURE 3 1/2"x5 1/2". IF YOU  
 GET ROUGH LUMBER THAT  
 MEASURES ACTUAL 4"x6" YOU WILL  
 NEED TO TRIM ONE SIDE OF THE  
 4"x6" (X) TO FIT INTO THE  
 SIMPSON CAP PIECE (8).



# RIGHT ELEVATION

SCALE: 1/2" = 1'-0"

(SWING SIDE - SWINGS NOT SHOWN)