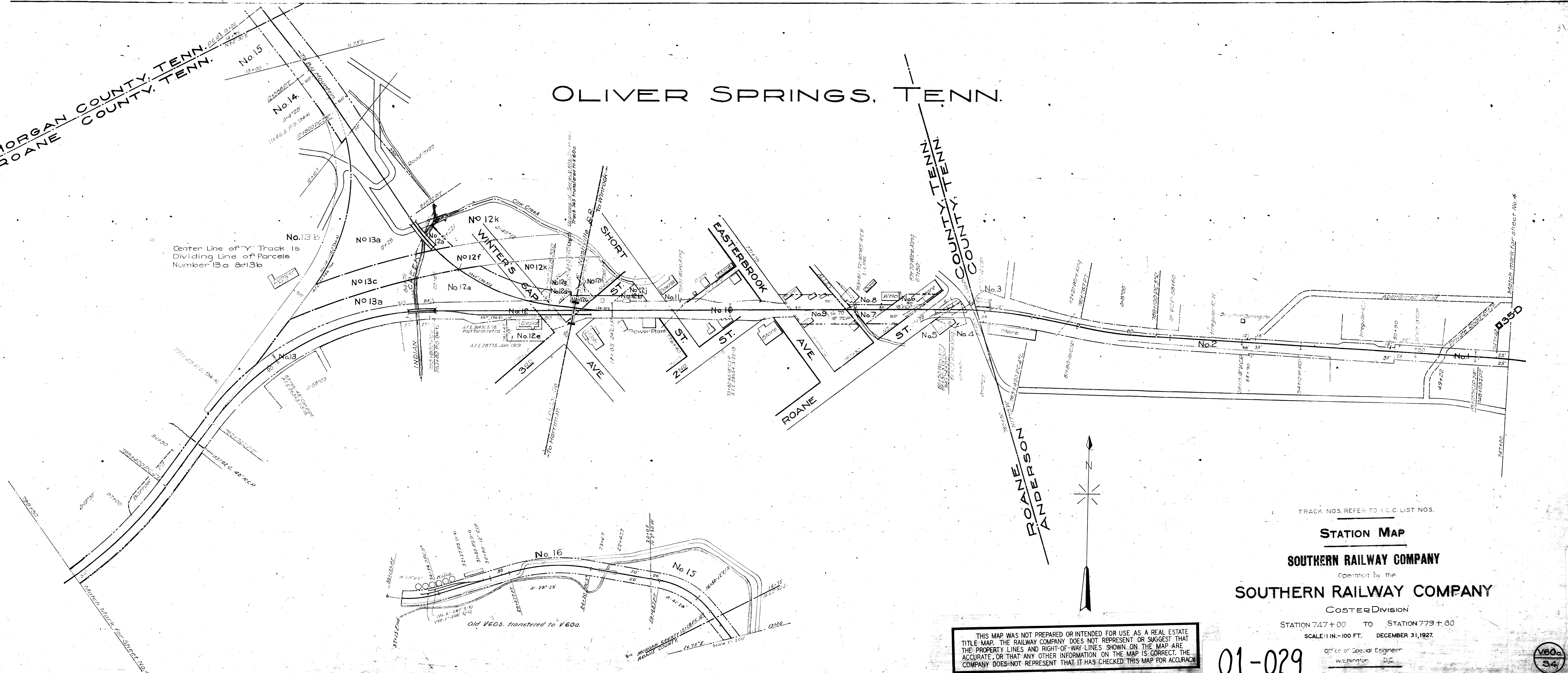


MORGAN COUNTY, TENN.
ROANE COUNTY, TENN.

OLIVER SPRINGS, TENN.

MORGAN COUNTY, TENN.
ROANE COUNTY, TENN.

Center Line of 'Y' Track is
Dividing Line of Parcels
Number 13a & 13b



TRACK NOS. REFER TO I.C.C. LIST NOS.

STATION MAP
SOUTHERN RAILWAY COMPANY
Operated by the
SOUTHERN RAILWAY COMPANY
COSTER DIVISION

STATION 747+00 TO STATION 779+00
SCALE: 1 IN. = 100 FT. DECEMBER 31, 1927.

THIS MAP WAS NOT PREPARED OR INTENDED FOR USE AS A REAL ESTATE TITLE MAP. THE RAILWAY COMPANY DOES NOT REPRESENT OR SUGGEST THAT THE PROPERTY LINES AND RIGHT-OF-WAY LINES SHOWN ON THE MAP ARE ACCURATE, OR THAT ANY OTHER INFORMATION ON THE MAP IS CORRECT. THE COMPANY DOES NOT REPRESENT THAT IT HAS CHECKED THIS MAP FOR ACCURACY.

01-029

Office of Special Engineer
Washington, D.C.

V60a
34

REFERS TO I.C.C. INVENTORY CHAINAGE 1918.