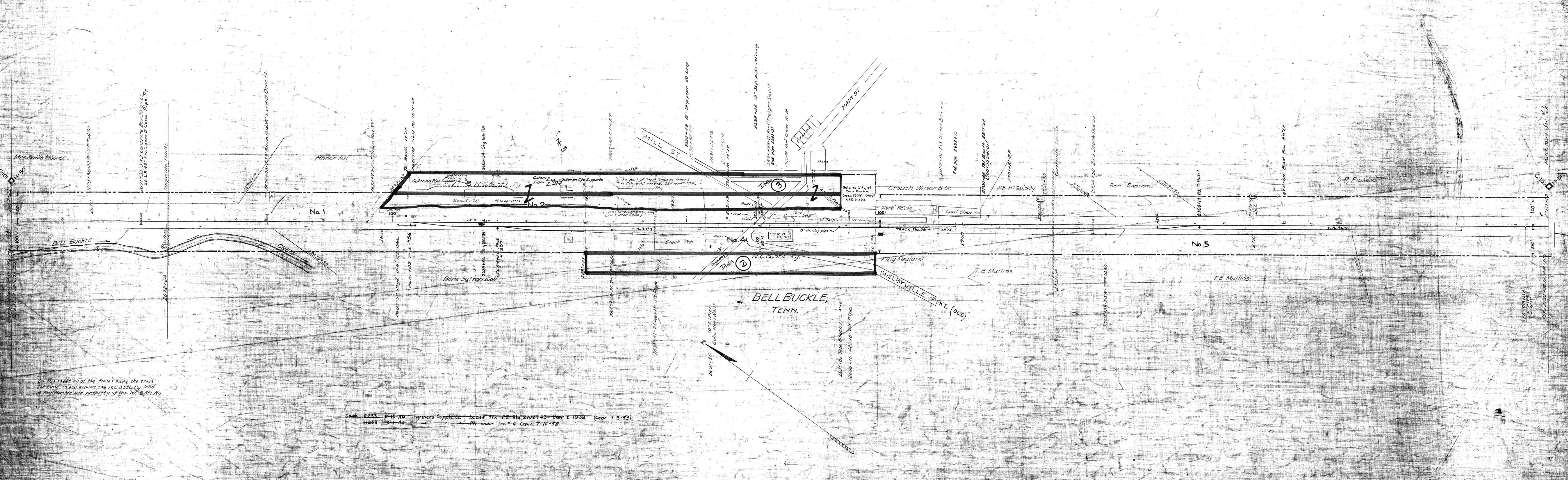


AFF 21152
DATE 3-4-68
DESCRIPTION
 Plan. 1-10-57
 Rel. 0.334 by sale to Town of Bell Buckle, Tenn.

NO.	GRANTOR	GRANTEE	INSTRUMENT	DATE	RECORD	CHPT. NO.	REMARKS
1	G.B. Moon	N.C. & St. L. Ry.	None	Feb. 26, 1889	DB 6-3-106.7, 1889	947	See Note 1
2	Crouch-Wilson & Co.	N.C. & St. L. Ry.	None				Track No. 3
3	Citizens	N.C. & St. L. Ry.	None	Jan. 15, 1892	Minute Book-N. & C.R.R. Co.		Depot grounds-Note 2
4							See Note 1
5							

NOTE 1- Charter with claimed under decisions of Tennessee Courts
 NOTE 2- Contract to 465 with City of Bell Buckle allow city to use a portion of depot grounds until the railroad shall need it. City to be maintained same, and covered fence to location indicated on map.



Cont. 6233 8-10-46 Farmers Supply Co. Lease Trx PS. Site 4002143 User K-19-58 (Cont. 1-9-53)
 11258 1-3-46 BN under Trk # 4 Cont. 7-15-58

102-A-27-A

BEDFORD CO. TENN.

02-002

STATION MAP
NASHVILLE, CHATTANOOGA AND ST. LOUIS RY.
CHATTANOOGA DIVISION
 STATION 266+22 TO STATION 270+16
 SCALE 1" = 100 FT. JUNE 30, 1916
 M.P. 500 to 510
 BELL BUCKLE