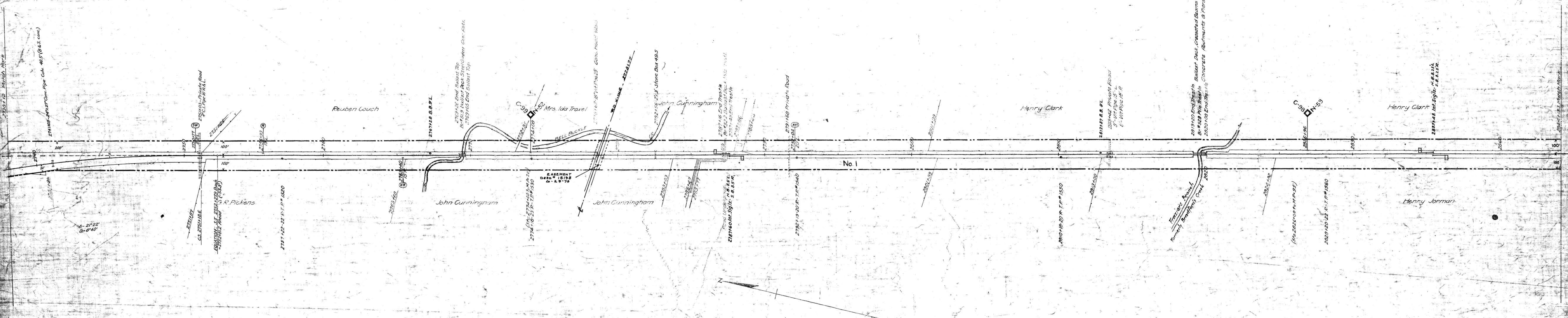


NOTE 1- Charter width claimed under decisions of Tennessee Courts.



Fences along track not shown by N.C. & ST. L. RY. are as follows: none

RIGHT-OF-WAY AND TRACK MAP  
 NASHVILLE, CHATTANOOGA AND ST. LOUIS RY.  
 CHATTANOOGA DIVISION

STATION 2738+53 TO STATION 2844+51  
 SCALE, 1 IN. = 200 FT. JUNE 30, 1916

02-004

Sheet No 50 of 73 sheets of Chattanooga Division from Survey Station 2738+53 to Survey Station 2844+51

M.P. 51.3 to 53.3