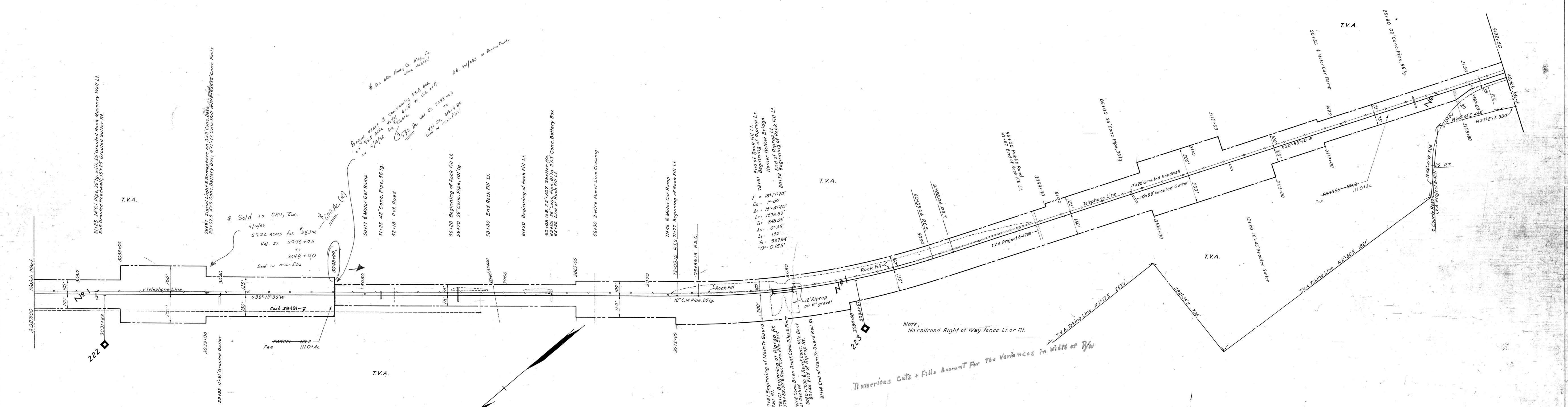


AFE Date Comp Description of change
 31220 11-9-49 Line change due to TVA Flood area
 33049 Const. 75'x107' Shelter Inc. at Bass Bay, Tenn.

PAR. No.	GRANTOR	GRANTEE	INST	DATE	RECORD	CUST. No.	REMARKS
1	TVA	L&N R.R.C.			DB. Page Date		Included with Par. No. 15 (Map V25/27)



L.F. 40597 Cont. 37420 6-15-40 Board of Public Utilities Wire X-ing at Sta 3055+27
 37421 8-19-41 Roy B. Sudbury Communication Line on L&N R.R. Sta 3052+20 to 3052+44 Cont. 3-9-53
 40921 3-9-51 4-2-57 Roy B. Sudbury Wire on L&N R.R. from 410' North of MP 222 to 2640' 45' MP 222, Cont. 7-1-59

NOTE:
 No railroad Right of Way fence Lt. or Rt.
 Numerous Cuts + Fills Account for the Variations in Width of R/W

RIGHT OF WAY AND TRACK MAP
 LOUISVILLE AND NASHVILLE R. R. CO.
 MEMPHIS LINE
 STATION 3027+00 TO STATION 3132+60
 SCALE 1 INCH=200 FT
 OFFICE OF CHIEF ENGINEER
 LOUISVILLE, KY

03-002

V25
 30