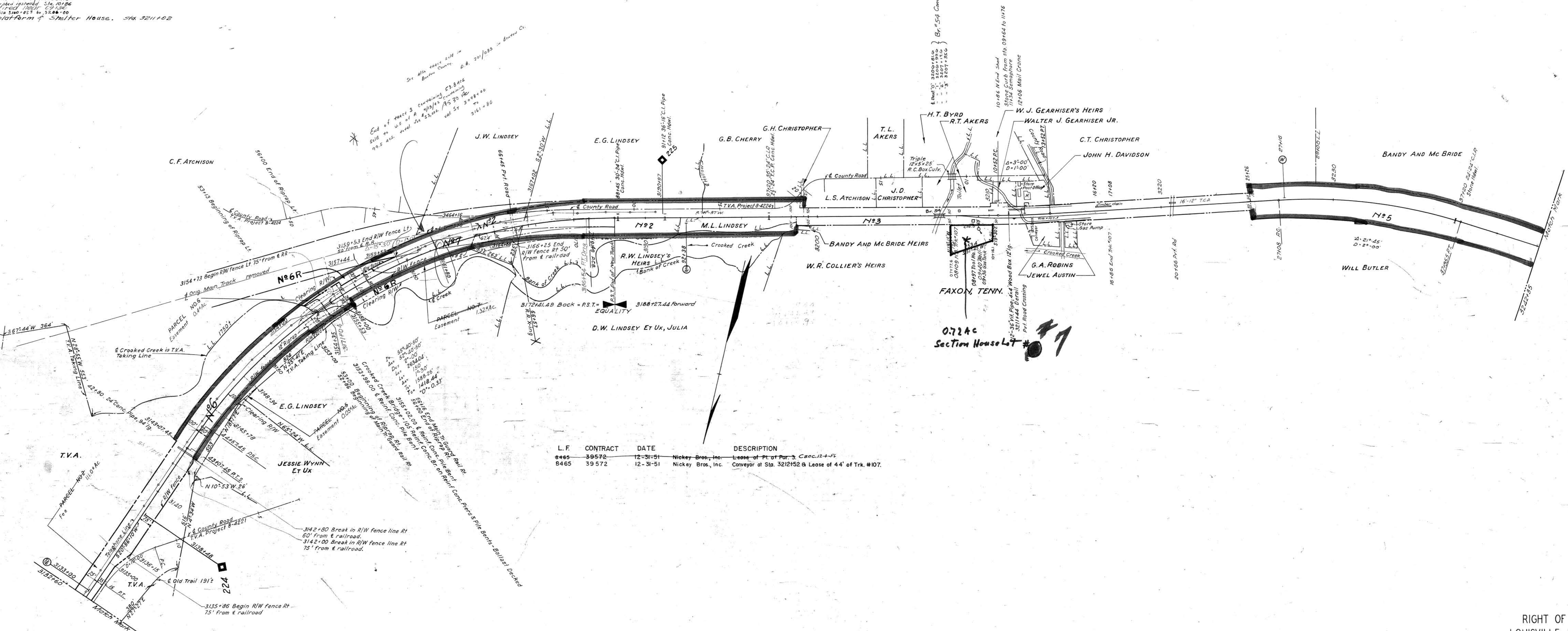


| A.F.E.N. | Date Comp. | Description of Change |
|----------|------------|-------------------------------------------------------|
| 19004 | 5-16-35 | Rel of Trk #107 inc. S.T.O. |
| 22059 | 8-24-37 | Sale of Par. #4 |
| 23211 | 8-20-37 | Section tool house moved to Big Sandy |
| 23395 | 12-30-37 | Rel of 642' of Trk #107 |
| 33322 | 5-29-45 | Add Creosote timber for ballast on Br. # 5A |
| 31440 | | Change in line due to TVA Flooded area |
| 36418 | 1-12-50 | Bridge 5A rebuilt with A conc. pile bents |
| 39815 | 2-28-50 | Repair railroad water tower damaged by 5A bridge |
| 41557 | 11-25-50 | Section house repaired, West Cr. use |
| 42115 | 4-9-52 | Rel. 3000' to line #107 Sta 3144+00 to 3144+00 |
| 46818 | 6-15-57 | Rel. Screening platform & Shelter House. Sta. 3211+02 |

| PAR. No. | GRANTOR | GRANTEE | INST. | DATE | RECORD | CUST. No. | REMARKS |
|----------|---------|---------|-------|------|--------|-----------|-------------------------------------------------------------------------|
| 6 | TVA | LENREG. | | | | | Included with Par. No. 13 Map V25/29 |
| 7 | | | | | | | U.S. Charter width not allowed in inventory not used for E.R. purposes. |



| L.F. | CONTRACT | DATE | DESCRIPTION |
|------|----------|----------|--------------------------------------------------------------------------|
| 8465 | 39572 | 12-31-51 | Nickey Bros., Inc. Lease of Pt. of Par. 3, Canc. 12-4-54 |
| 8465 | 39572 | 12-31-51 | Nickey Bros., Inc. Conveyer at Sta. 3212152 & Lease of 44' of Trk. #107. |

RIGHT OF WAY AND TRACK MAP
 LOUISVILLE AND NASHVILLE R. R. CO.
 MEMPHIS LINE
 STATION 3132+60 TO STATION 3242+35
 SCALE 1 INCH = 200 FT.
 OFFICE OF CHIEF ENGINEER
 LOUISVILLE, KY

03-003

V25
31