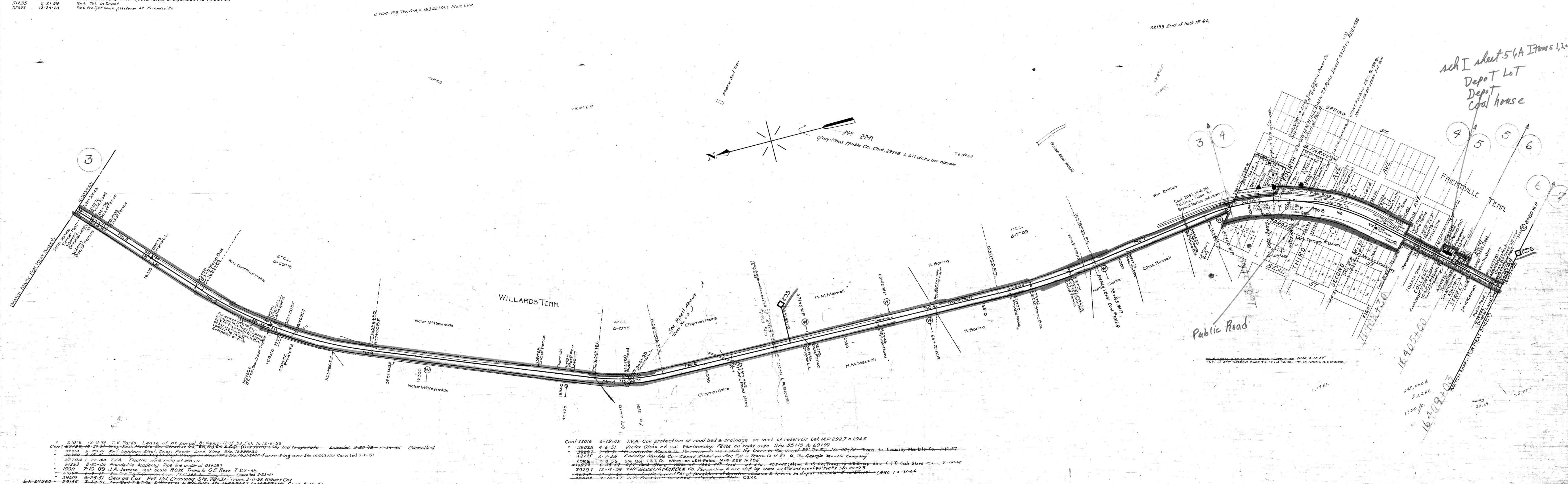


A.F.E. No.	Date Comp.	Descr of Change
6048	12-24	Retire Per No. 14, 15, 16, 17, 18, 19, & 21, 20.
12675	6-17-20	Const. of Tr. 7A for Tenn. Prod. Marble Co. - 113 at Val Sta 16391135- Tk. 284 long.
250	10-11-15	Form. of Tr. 46
3563	5-16-23	Const. of Facilities to Soc. Foreman's Home, Per 18
16693	2-17-33	Ret. of 50' turnout track 97 (184' Removed)
23269	12-1-37	Const. of Tr. 6A
27793	7-3-42	Ret. Tr. 7A
39386	2-15-50	Ret. Stock Pens - Sta. 16398140
40238	11-6-50	Ret. Tr. 6A, 6B, 6C, 6D - (P.S. Tr. 6A at Sta 343+017)
41038	10-31-51	Const. of Protective Fence (Victor Olson et al) Sta. 55+15 to 69+99
51235	5-21-59	Ret. Tel. in Depot
55853	12-24-64	Ret. freight house platform at Friendsville.

No. Grantor	Grantee	Inst.	Date	Record	Sheet No.	A.F.E.	Remarks
228	Gray-Knox Marble Co. L.A.N.	Deed	10-30-37	5-27-35	29798	23269	Bond (No. land conveyed) Easement.
P.R.B.	L.F.N.	Blount County			14371		



21916 12-9-34 T.K. Parks Lease of pt parcel 8 Memo 12-15-33 6x11 to 12-8-38  
 Cont 29798 10-30-37 Gray-Knox Marble Co. Const. of Tr. 6A, 6B, 6C, 6D - (P.S. Tr. 6A at Sta 343+017) - Extended 10-29-49 - 10-27-50 Cancelled  
 38314 5-29-41 Fort Loudoun Elec. Coop. Power Line King Sta. 16326120  
 38360 4-16-41 Fort Loudoun Elec. Coop. Power Line King Sta. 16326120  
 27204 1-27-41 T.V.A. Electric wire King at 303+11  
 30293 8-30-45 Friendsville Academy Pipe line under at 303+07  
 10311 7-19-03 J.A. Jackson inst. Scale ROW Trans. to G.E. Rose 7-22-46  
 2316 6-19-43 Friendsville Academy Pipe line under at 303+07  
 L.F. 27560 2-18-51 George Cox P.V. Rd. Crossing Sta. 78+31 Trans. 3-11-58 Gilbert Cox  
 29186 3-23-51 Sweet Bell & Co. 2 Wires on L.N. Poles Sta. 16403+27 to 16405+16 Canc. 8-10-51  
 29185 8-16-51 Wires on L.N. Poles Sta. 2831+305  
 35475 2-23-60 Fort Loudoun Electric Coop. 2 Wires on R/W Sta. 16392+40 & Power Line King over Sta. 16403+62  
 35473 4-15-59 Wire over Sta. 371+24

Cont 33016 6-19-42 TVA-Cox protection of road bed & drainage on acct. of reservoir bet MP 292.7 & 294.5  
 39028 4-4-51 Victor Olson et. v. Partnership Fence on right side Sta 55+15 to 69+99  
 39297 7-19-51 Friendsville Marble Co. Reclamation Forest on Sta 55+15 to 69+99 - Trans. to Eadsley Marble Co. 1-14-57  
 42735 6-1-55 Friendsville Marble Co. Const. Road on Sta 55+15 to 69+99 - Trans. 12-4-59 to The Georgia Marble Company  
 2885 9-8-55 50' Bell T.E.C. Wires on L.N. Poles Mile 288 to 295  
 38873 6-28-57 67' Oak Grove Wires on Sta. 16403+27 to 16405+16 - Trans. to J.B. Cox Sta. 16403+27 to 16405+16 - Canc. 5-16-67  
 39297 12-4-59 THE GEORGIA MARBLE CO. Reclamation Forest on Sta 55+15 to 69+99 - Trans. to J.B. Cox Sta. 16403+27 to 16405+16 - Canc. 5-16-67  
 42735 6-1-55 Friendsville Marble Co. Const. Road on Sta 55+15 to 69+99 - Trans. 12-4-59 to The Georgia Marble Company  
 42735 6-1-55 Friendsville Marble Co. Const. Road on Sta 55+15 to 69+99 - Trans. 12-4-59 to The Georgia Marble Company

sch I sheet 56A Items 1, 2, 3  
 Depot Lot  
 Depot  
 Coal house

RIGHT OF WAY AND TRACK MAP  
 LOUISVILLE AND NASHVILLE R. R. CO.  
 KNOXVILLE DIVISION  
 MENTOR TO JENA VIA GREENBACK  
 STATION 16303+43 TO STATION 16409+03  
 SCALE 1"=200 FT. JUNE 30 1917

005-012