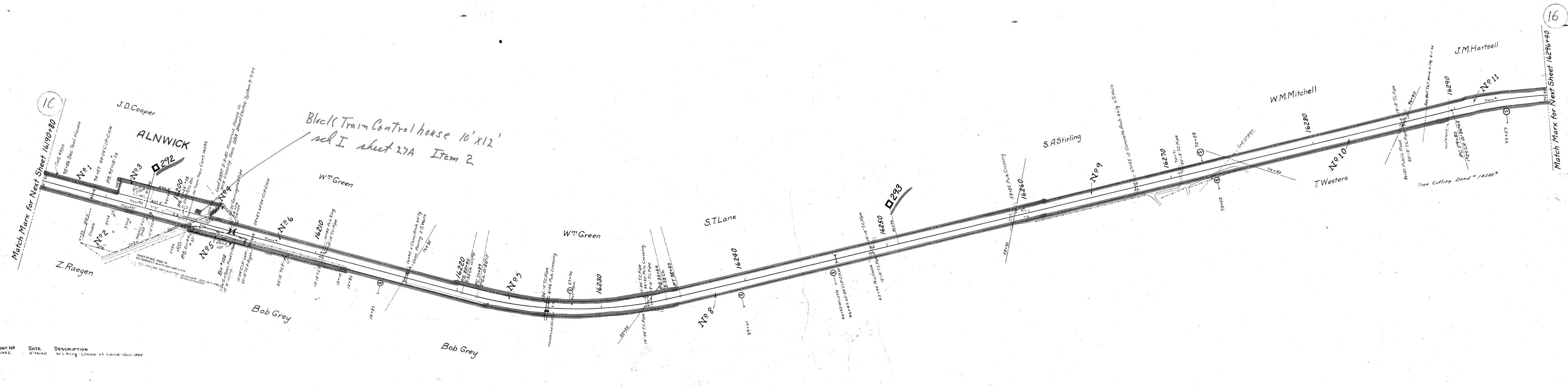


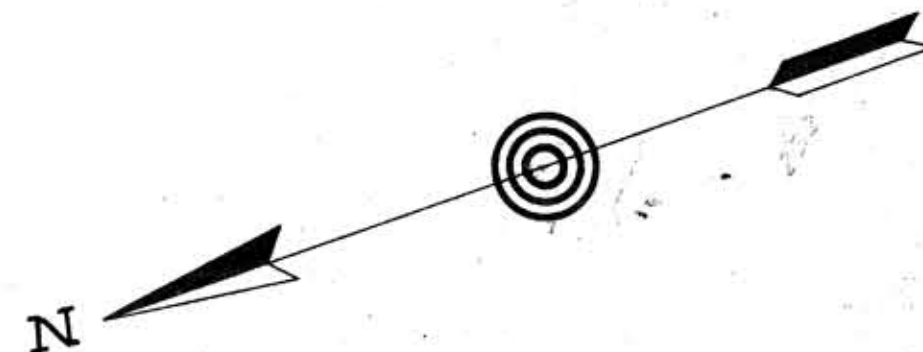
AFENo.	Date	Comp.	Description of Change
1028	11-12-20		Consolidated track to Section Bremen station.
8772	-17		Trk. 30 extended 100'
16250	5-16-32		See Farmers house destroyed by fire. Check file 15867 7-16-32
17370	2-7-37		Rem. of Turnout trk 258 150'
19113	12-30-35		Sola Dur. 2
20004	2-20-36		Ret. of Tool Ho.
29840	7-20-42		Ret. of Trk #38
4018	5-31-52		Ret. of Trk #37
39300	3-29-45		Bridge #105 Raised.
49373	12-16-57		Ret. Signal Mtrs. Tool Hse.



CONT. NO.	DATE	DESCRIPTION
31442	4-16-40	W.L. King Lease of Land - Cont. 1848

- Cont. 32270 3-31-41 Knoxville Power Co. Power Line King Sta. 16211+03
- 32314 5-29-41 Fort Loudoun Elect. Co. Power Line King Sta. 16220+158
- 34851 7-25-43
- 37224 3-16-42 Arthur Huff Lease Land 125' x 85' of Cont. #9 Sta. 16196+90
- 37880 12-5-49 Fort Loudoun Elec. Co. Power Line King over of 16273+50
- 19000-46
- 43511 11-15-36 Blount County Def. E. Fence sta. 16188+01 to sta. 16194+36.
- Deed 115 11-16-33 Sta. of Tenn. easement for Ed. (O. 35Ac.) of sta. 200+87.
- 37774
- Cont. 47628 7-17-61 South Blount County 16187+00 to 16200+00

Entire Right of Way fenced on both sides except on East side from 286+47 to 290+53, 267+14 to 273+72, 194+41 to 204+30 and on West Side from 290+51 to 296+40
 Cont. 28226 5-7-38 Gentry Millsaps new fence on R. 50' over 16194+33 to 16200+72



RIGHT OF WAY AND TRACK MAP
 LOUISVILLE AND NASHVILLE R. R. CO.
 KNOXVILLE DIVISION
 STATION 16190+80 TO STATION 16296+40
 SCALE: 1 INCH = 200 FT. JUNE 30 1917.

005-023

J. Bede...
 SURVEYOR

V29
 9