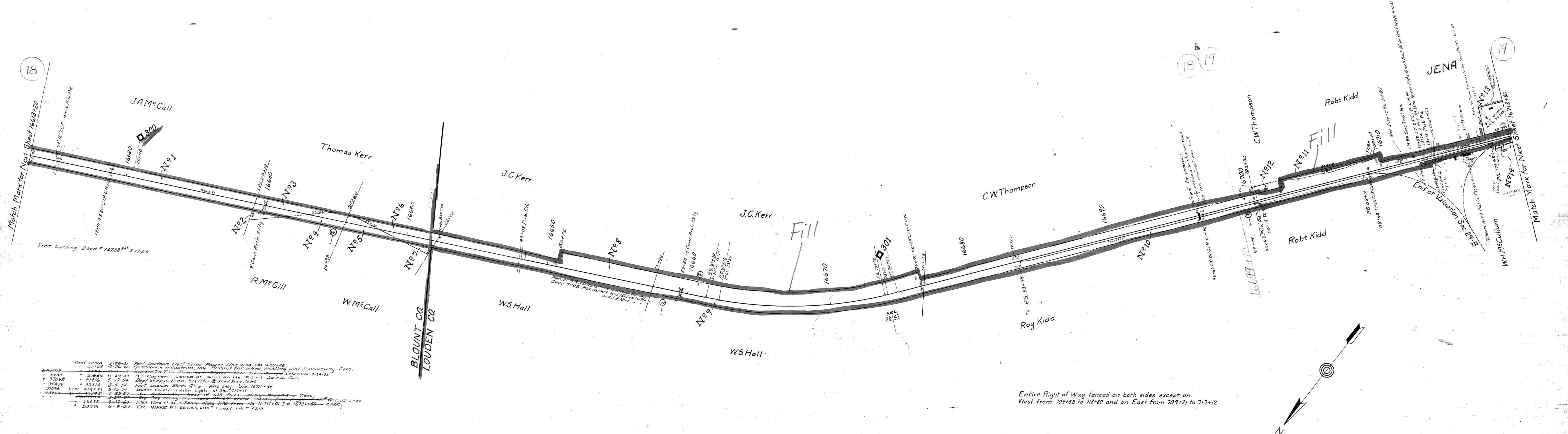
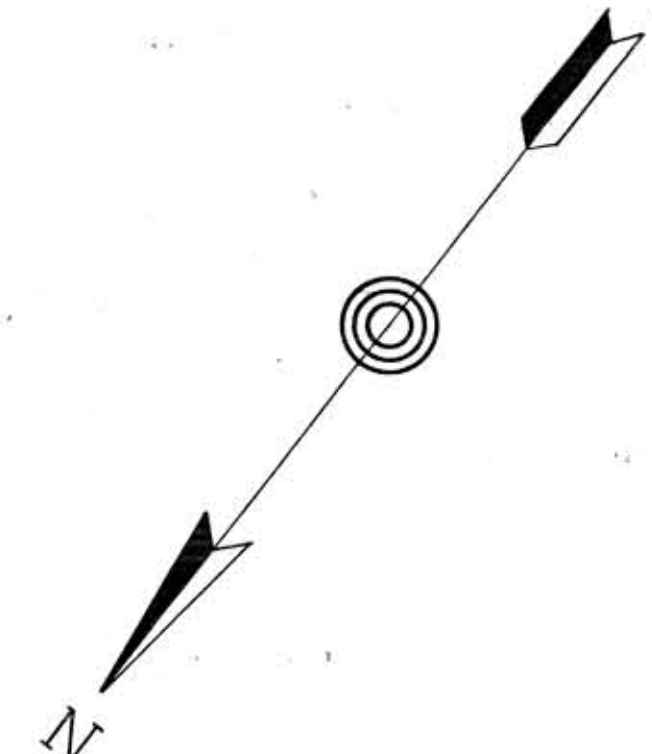


A.F.E. No.	DATE	DESCRIPT. OF CHANGE
29398	1-17-39	Remove tel. equipment from station
34322	3-13-44	Ret. stock pylon and change 210-3-15
49939	2-11-58	Ret. Sec. Hse Sta 16716+80
55430	11-6-63	Ret. sec. hse. 16717+80
57537	4-28-65	Ret. 270' incl. I.P.O. of Trk. # 42



Cont 22214	5-20-41	Fort Loudoun Steel Corp Power Line King Sta 16714+6
35153	10-26-46	Greenback Industries, Inc. Permit for waste, loading plat & driveway. Conc.
18021	2-28-47	H.E. Carver Lease of section No. 23 at Jena, Tenn.
37092	4-11-54	Dept of Navy Tenn. Sig. Lites @ road King Jena
32314	8-5-54	Fort Loudoun Elevat. Equip - Wm King Sta. 16711+45
37098	8-29-54	Loudon County. Flasher lights at Sta. 713+11
44466	5-23-59	Sec. 26.27
46655	8-17-60	Allen Ward et al. - Fence along R.W. from sta. 16717+01.5 to 16718+80 - C.A.M.C.
53091	6-8-67	T.F.C. MARKETING SERVICE, INC. Const. Trk # 42A

Entire Right of Way fenced on both sides except on West from 709+53 to 718+80 and on East from 709+21 to 717+12



RIGHT OF WAY AND TRACK MAP
LOUISVILLE AND NASHVILLE R. R. CO.
KNOXVILLE DIVISION
STATION 16613+20 TO STATION 16718+80
SCALE: 1 INCH = 200 FT. JUNE 30 1917.

SHEET NO. 13 OF 21 OF KNOXVILLE DIVISION FROM SURVEY STATION 16613+20 TO SURVEY STATION 16718+80

VALUATION ENGINEER

005-027