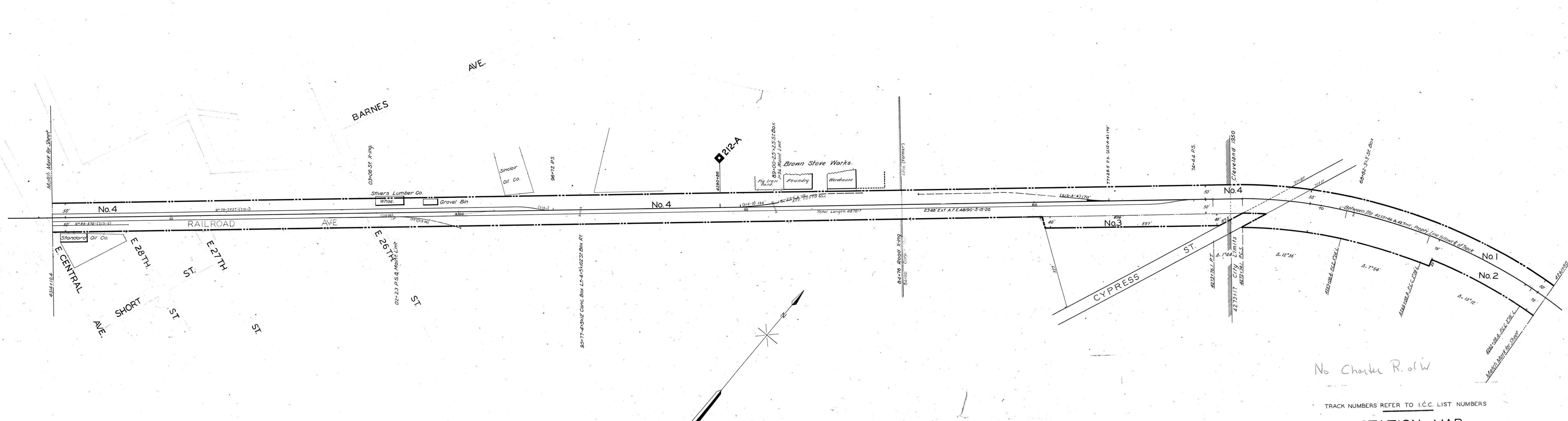


BRADLEY COUNTY, TENN.
CLEVELAND, TENN.



THIS MAP WAS NOT PREPARED OR INTENDED FOR USE AS A REAL ESTATE TITLE MAP. THE RAILWAY COMPANY DOES NOT REPRESENT OR SUGGEST THAT THE PROPERTY LINES AND RIGHT-OF-WAY LINES SHOWN ON THE MAP ARE ACCURATE, OR THAT ANY OTHER INFORMATION ON THE MAP IS CORRECT. THE COMPANY DOES NOT REPRESENT THAT IT HAS CHECKED THIS MAP FOR ACCURACY.

No Charter R.O.W.

TRACK NUMBERS REFER TO I.C.C. LIST NUMBERS
STATION MAP
SOUTHERN RAILWAY COMPANY
Operated by the
SOUTHERN RAILWAY COMPANY

STATION 4261+50 TO STATION 4314+10.4
SCALE: 1 IN. = 100 FT. DECEMBER 31, 1927.

Office of Special Engineer
Washington, D. C.

STATIONING REFERS TO I.C.C. INVENTORY CHAINAGE - 1916. Tracks corrected to Dec 31, 1927.

006-008

