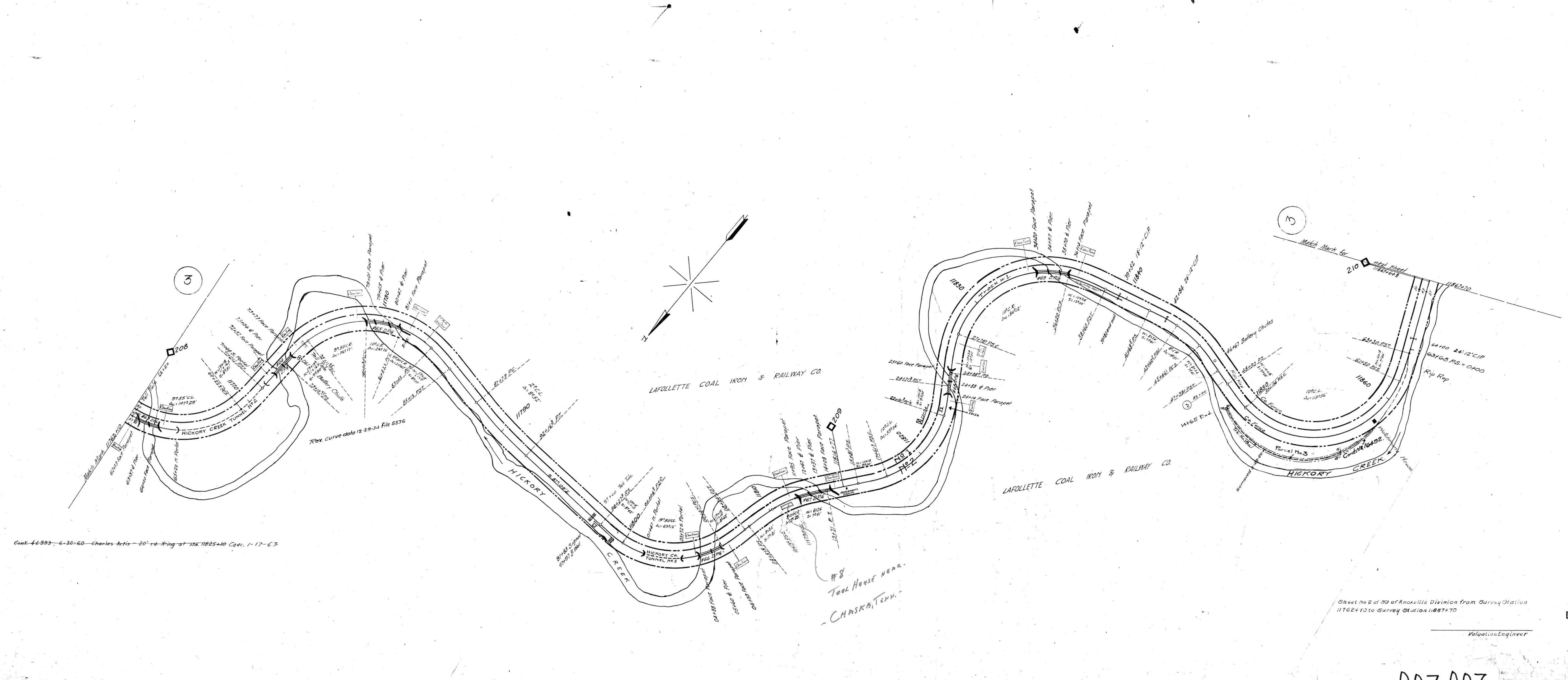


A.F.E. No. 34014
 36036
 Date Comp. 2-26-46
 6-24-47
 Description of Change
 Ret Money Guard rail from Sta. 11808+49 to 11813+42.
 Ret Money Guard rails 639' N. of MP 208, 3 1/2', 957' S. of MP 208, 5183',
 3590' S. of MP 208, 5104', 110' S. of MP 209, 383', 1080' S. of MP 209, 51322' &
 installing scrap inner guard rails across Bridges 43, C.S. 6.6 & 6.9



Cont. 46393-6-30-60-Charles Artis-20' rd. X-ing at sta. 11825+40 Cont. 1-17-63

Sheet No 2 of 39 of Knoxville Division from Survey Station
 11762+10 to Survey Station 11867+70
 Valuation Engineer

RIGHT OF WAY AND TRACK MAP
 LOUISVILLE AND NASHVILLE R. R. CO.
 KNOXVILLE DIVISION
 STATION 11762+10 TO STATION 11867+70
 SCALE 1 INCH=200 FT. JUNE 30 1917.
 OFFICE OF CHIEF ENGINEER
 LOUISVILLE, KY.

007-007

V90