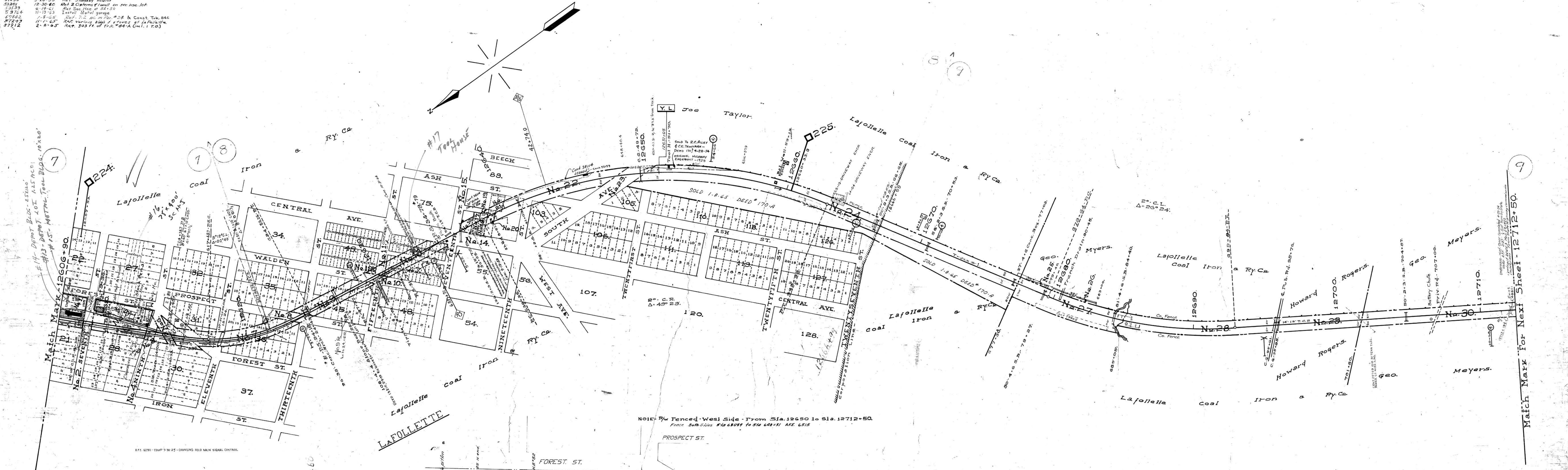


A.F.E. No	Date Comp.	Description of Change
9388	10-14-27	Rearrangement of Stock Pens
14253		Const. of No. 25
3137	10-29-23	Sold pt. par. 24
25076	1-18-39	Extend messenger platf 30' No. End 100' to End
28048	12-19-41	Ret. of 5164' pens
33931	3-3-40	Shut. No. 70 & 82
34641	4-10-36	Improve Platform lighting at Depot
41598	1-4-52	Ret. Trk. #3 over 59' 11" & set 3' pipe details with Hand Details.
42261	4-14-52	Ret. Section Lumber's House at Sta. 12653 + 0.00
44171	10-2-53	Ret. Sect. House on Toilet at Sta. 12657 + 0.00
43864	6-11-1953	Ret. Sect. House on Toilet at Sta. 12656 + 0.00
51255	5-20-59	Ret. Standby Heater
53201	12-30-60	Ret. 2 Columns of wall on sec. hse. lot
53339	4-16-61	Ret. Sec. hse. at Sta. 12653
59764	11-15-63	Install Metal garage
60862	7-8-65	Ret. 7' 2" sec. on par. #2 & Const. Trk. B&C
57243	11-1-65	Ret. Various hse. & stoves at 'Factory'
57912	2-8-65	Ret. 303 ft. of Trk. #24-A (incl. 1 T.O.)



A.F.E. No	Date Comp.	Description of Change
Cont. 29241	12-12-36	City of LaFollette water line under at 59186, 60313 & 624138
Cont. 31184	11-22-39	T.C. Paterson Erect. 6" x 10" Pump Ho. 12611-14182 lease of land 30' x 40' at 61134.5 conc. 1944
Cont. 32182	1-15-41	Elec. Dept. City of LaFollette, power lines over at 648+49 & guy wire anchor at 636141
Cont. 32382	2-30-41	Const. of water line at Sta. 12650 to Sta. 12670
Cont. 32600	11-24-41	A.R. Claiborne Lease of land 20' x 70' with 2' 3" Sls. 12610163, N. line 66.5' at Trk. Trans. to Fleet Office, No. 10-49 Conc. 1-1-42
44955	7-16-46	W.H. Woodard Lease of land 60' x 100' at Sta. 12650 to Sta. 12670 - Trans. to Claiborne Const. and Supply Co. Inc. at Sta. 12650
35296	9-30-46	Sou. Bell Tel. & Tel. Co. of N.Y. Permit for tel. line on R/W from Sta. 12646+71.9 to 12659+59.3. Cancelled
LF40622	3-7-49	City of LaFollette 6" C.I.P. Water Main encased in 18" Conc. Pipe at Sta. 301+47
118696	3-18-50	State of Tenn. Dept. of Highways a fill and cut encroachment 650' of varying widths Sta. 39196.5 to 46+44.5 - Road
27360	3-29-50	South Bell T.T. Co. One pole, seven knee braces. Two guy wires anchors. 76' 59' 160; 58' 112; 56' 175; 55' 29; 50' 489; 48' 114; 46' 171; 45' 150; 45' 171
40983	11-13-51	R.C. Alley & Co. Troutman Lease of Land E. side s1/4 648+40.4 to s1/4 56+57.9 Canc. 9-28-64
40947	6-5-52	James C. Gibson Lease of land 20' wide Sta. 671+33 to 681+70.3; Mens. 8-2-62; Trans. to Mrs. Dorothy Baird Gibson
100078	11-11-52	J.H. Rogers Fence east side erected to 100+100 - West Side 829' 116 to 701+6.6
357102	11-24-41	A.R. S.V. Claiborne Lease of LAND 70' x 70' - TRANS. 7-7-60 to Gas Service Co.
47005	10-9-61	City of LaFollette Clearcut Down line from Sta. 12650 to Sta. 12670
48591	3-27-62	LaFollette Industries Trans. of land 100' x 100' at Sta. 12650 to Sta. 12670
47211	4-8-62	City of LaFollette Sewer Line King 8" C.P.R. enclosed in 24" C.P.R. at Sta. 12650 to Sta. 12670
7389	1-12-65	LaFollette Hdw. & Lumber Co. Inc. - Const. Trk. #24-C 1850' long
	4-0-66	Encroachment on R/W 12650+00

NOTE: R/W Fenced West Side - From Sta. 12650 to Sta. 12712+50. Fence both sides 8' to 6' 6" x 11' 1" AFE 6515

RIGHT OF WAY AND TRACK MAP  
LOUISVILLE AND NASHVILLE R. R. CO.  
KNOXVILLE DIVISION  
STATION 12606+90 TO STATION 12712+50  
SCALE - 1" = 200 FT.  
JUNE 30 1917.

007-017