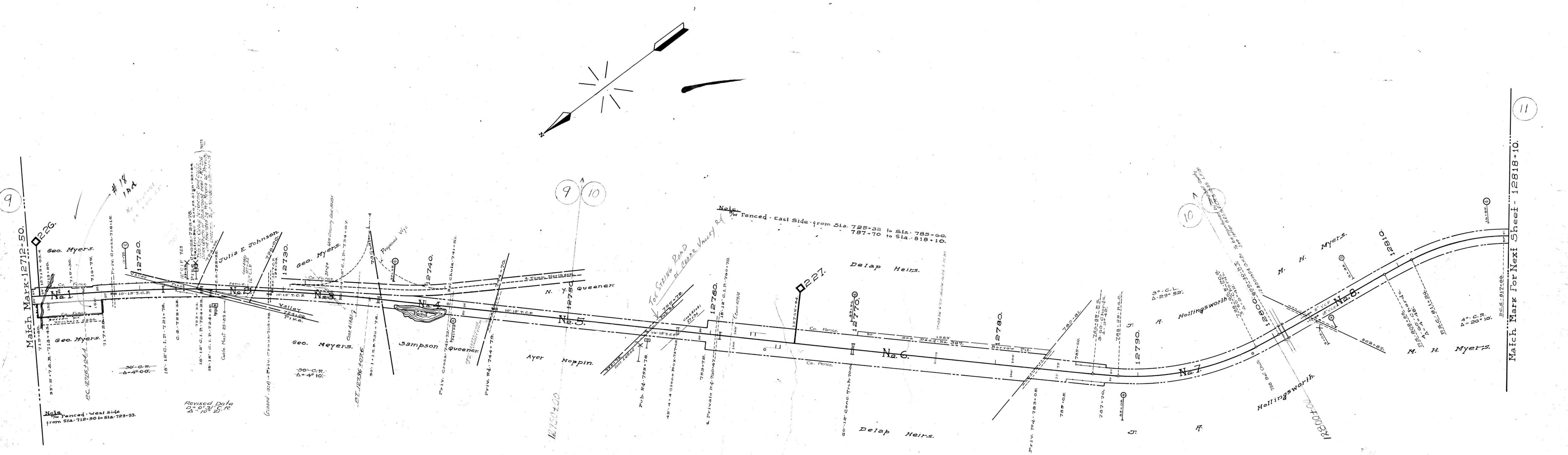


A.E. 35667 Comp. 10-21-47 Const. Trk. # 86
 " 35529 " 4-15-49 Rel. Trk. # 86
 " 41570 " 2-15-52 Const. Trk. # 86 - L&N-RS TO CP(152)
 " 37511 " 1-15-52 Gal. 125' of Trk. # 86



9 10

Note
 W Fenced - West Side
 from Sta. 719+50 to Sta. 729+93

Note
 W Fenced - West Side - From Sta. 729+00 to Sta. 785+05
 787+70 to Sta. 806+15
 812+52 to Sta. 818+10
 Small French Drains or Rock Ribs inside Fill to prevent slides etc.
 From Sta. 769+05 to Sta. 782+71

- 35034 7-31-47 Foster S. Dringman Co. Spur Trk. # 26 - 12.5' long (Cancelled)
- 38293 3-2-51 City of Lenoire, Elec. Dept. power line King over rd. 755+54
- 39230 1-15-51 The Pure-Silk Co. - 2nd. Div. - 100' long - 12-25-54
- 4100 7-20-51 Hodge Claiborne - 2nd. Div. - 100' long - 12-25-54
- 40993 7-5-50 Jackson Co. Utility Dist. of Campbell County - 4' water line over Sta. 1276+49
- 43047 8-20-50 City of Lenoire Electric Dept. Overhead Wire Xing 1275+94
- 26942 8-8-50 Sou. Bell Tel. & Tel. Co. Wire Xing over Sta. 12755+894
- 41570 2-15-52 State of Tenn. Dept. of Highways - Concrete bridge spans of grade King of Sec. Fed. Aid Hwy. #. 2008
- 41881 4-14-60 Hodge Claiborne - 2" water line Xing under Sta. 735+23

RIGHT OF WAY AND TRACK MAP
 LOUISVILLE AND NASHVILLE R. R. CO.
 KNOXVILLE DIVISION
 STATION 12712+50 TO STATION 12818+10
 SCALE - 1 INCH = 200 FT. JUNE, 30 1917.
 Valuation Engineer
 OFFICE OF CHIEF ENGINEER,
 LOUISVILLE, KY.

007-018