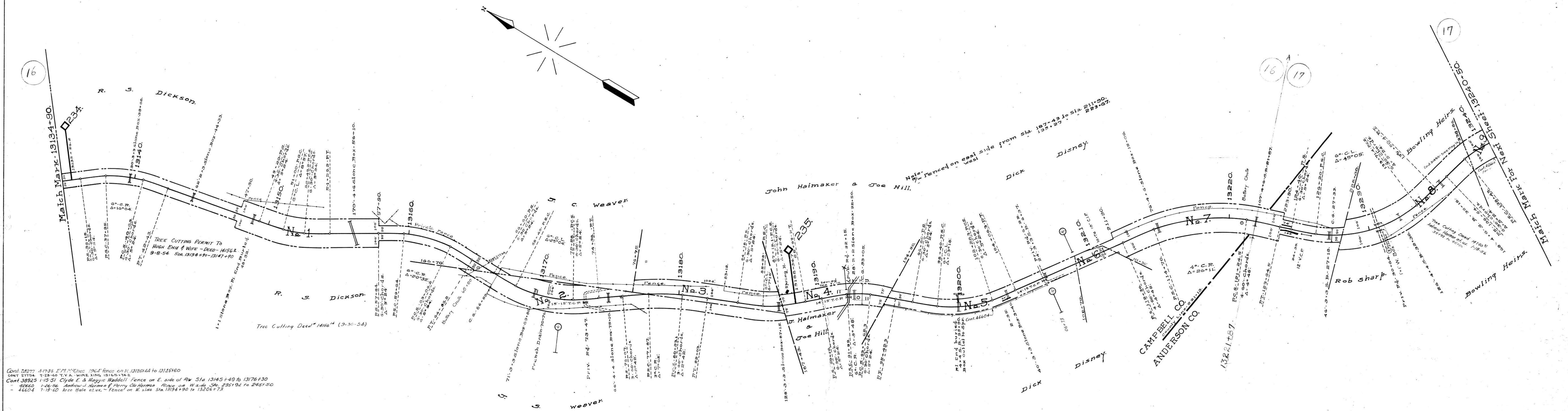


Cont. 28277 4-17-35 E.M. McKee 1964 fence on N. 1312644 to 13115160  
 Cont. 21334 7-13-30 T.V. & W. W. W. 1916 to 1916-1916  
 Cont. 38925 1-15-51 Clyde E. & Maggie Waddell Fence on E. side of R.W. Sta. 131451-49 to 13176130  
 46660 1-26-56 Andrew J. Harmon & Perry O. Harmon Fence on W. side Sta. 235192 to 245130  
 46604 7-19-60 Arza Hale et. ux. - Fence on W. side Sta. 13134190 to 13206173



Sheet No. 15 of 39 of Knoxville Division from Survey Station 13134+90 to Survey Station 13240+50

RIGHT OF WAY AND TRACK MAP  
 LOUISVILLE AND NASHVILLE R. R. CO.  
 KNOXVILLE DIVISION  
 STATION 13134+90 TO STATION 13240+50  
 SCALE: 1 INCH = 200 FT. JUNE 30 1917.  
 OFFICE OF CHIEF ENGINEER,  
 LOUISVILLE, KY.

Valuation Engineer

007-022