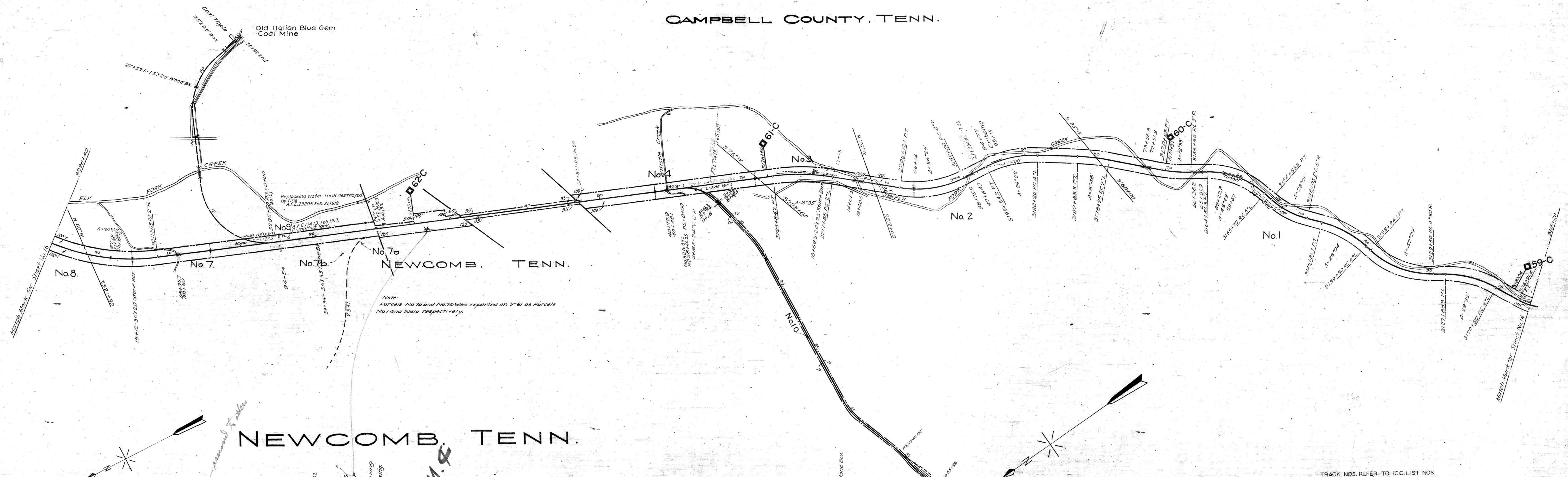
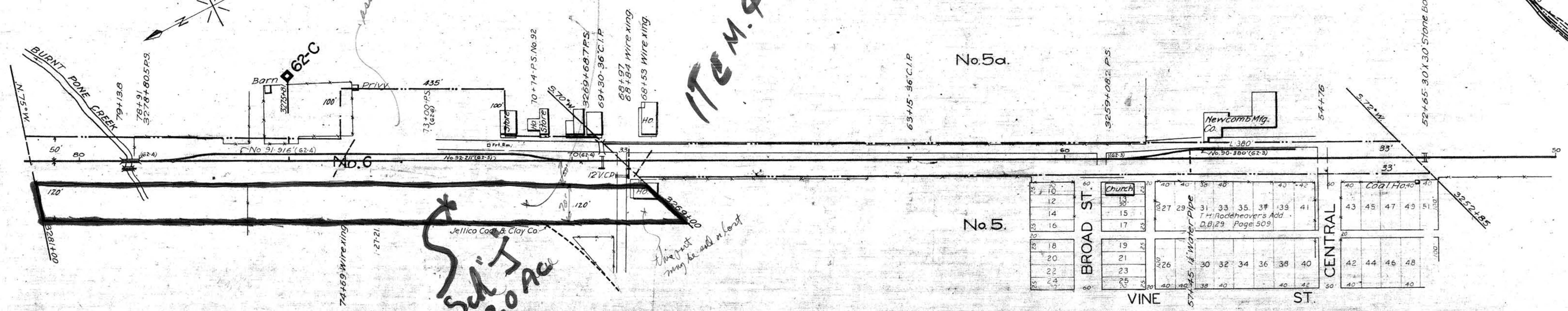


CAMPBELL COUNTY, TENN.



NEWCOMB, TENN.



THIS MAP WAS NOT PREPARED OR INTENDED FOR USE AS A REAL ESTATE TITLE MAP. THE RAILWAY COMPANY DOES NOT REPRESENT OR SUGGEST THAT THE PROPERTY LINES AND RIGHT-OF-WAY LINES SHOWN ON THE MAP ARE ACCURATE, OR THAT ANY OTHER INFORMATION ON THE MAP IS CORRECT. THE COMPANY DOES NOT REPRESENT THAT IT HAS CHECKED THIS MAP FOR ACCURACY.

007-036

TRACK NOS. REFER TO I.C.C. LIST NOS.
RIGHT-OF-WAY AND TRACK MAP
SOUTHERN RAILWAY COMPANY
 Operated by the
SOUTHERN RAILWAY COMPANY
 COSTER DIVISION
 STATION 3115 + 20 TO STATION 3326 + 40
 SCALE: 1 IN. = 400 FT. DECEMBER 31, 1927.
 Office of Special Engineer
 Washington, D.C.
 STATIONING REFERS TO I.C.C. INVENTORY CHAINAGE - 1916.