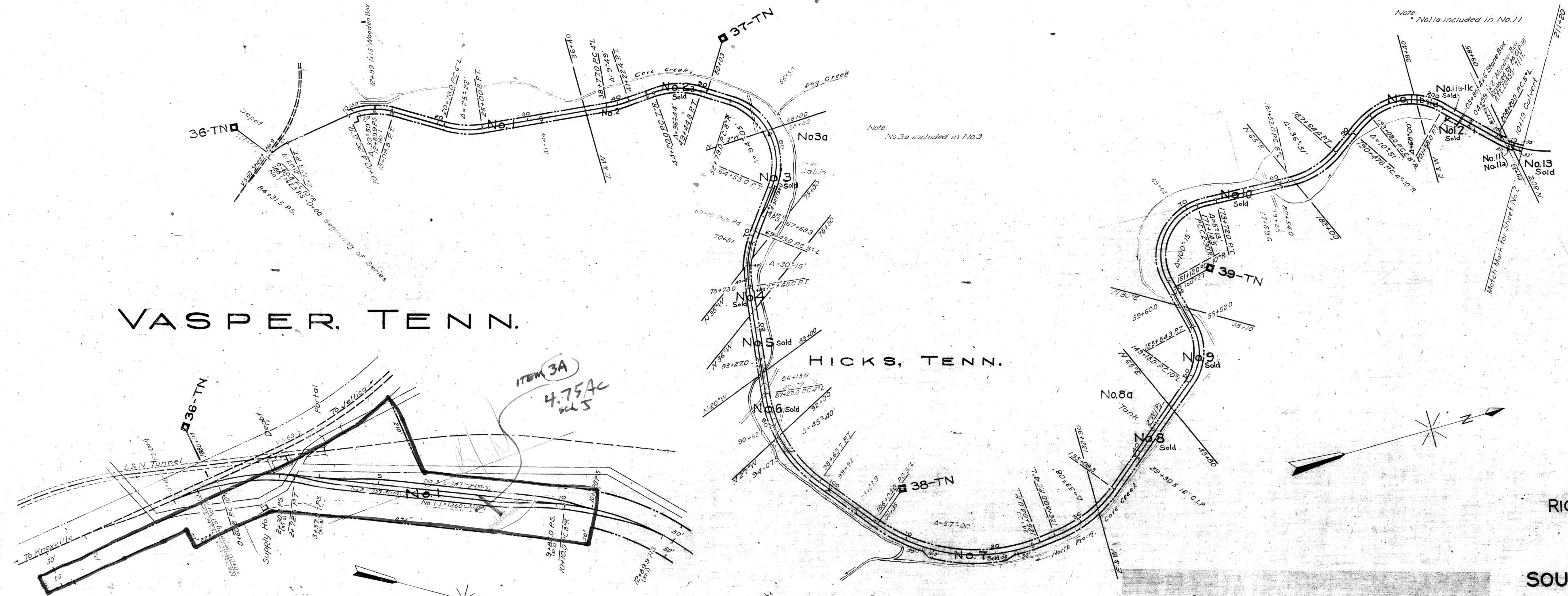


CAMPBELL COUNTY, TENN.

VASPER, TENN.

HICKS, TENN.



THIS MAP WAS NOT PREPARED OR INTENDED FOR USE AS A REAL ESTATE TITLE MAP. THE RAILWAY COMPANY DOES NOT REPRESENT OR SUGGEST THAT THE PROPERTY LINES AND RIGHT-OF-WAY LINES SHOWN ON THE MAP ARE ACCURATE, OR THAT ANY OTHER INFORMATION ON THE MAP IS CORRECT. THE COMPANY DOES NOT REPRESENT THAT IT HAS CHECKED THIS MAP FOR ACCURACY.

TRACK NOS REFER TO ICC LIST NOS  
**RIGHT-OF-WAY AND TRACK MAP**  
**SOUTHERN RAILWAY COMPANY**  
 Operated by the  
**SOUTHERN RAILWAY COMPANY**  
 COSTER DIVISION

STATION 0 + 00. TO STATION 211 + 20  
 SCALE: 1" = 400 FT. DECEMBER 31, 1927.

Office of Special Engineer  
 Washington, D.C. Abandoned Mar. 18, 1937  
 A.F.E. 69517 5/27.

STATIONING REFERS TO ICC INVENTORY CHAINAGE - 1918  
 Tracks corrected to Dec. 31, 1927

007-039

