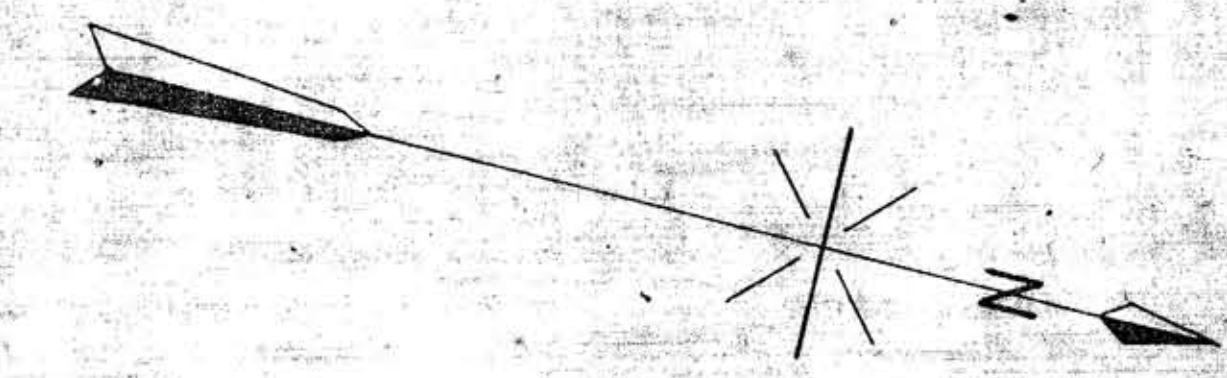
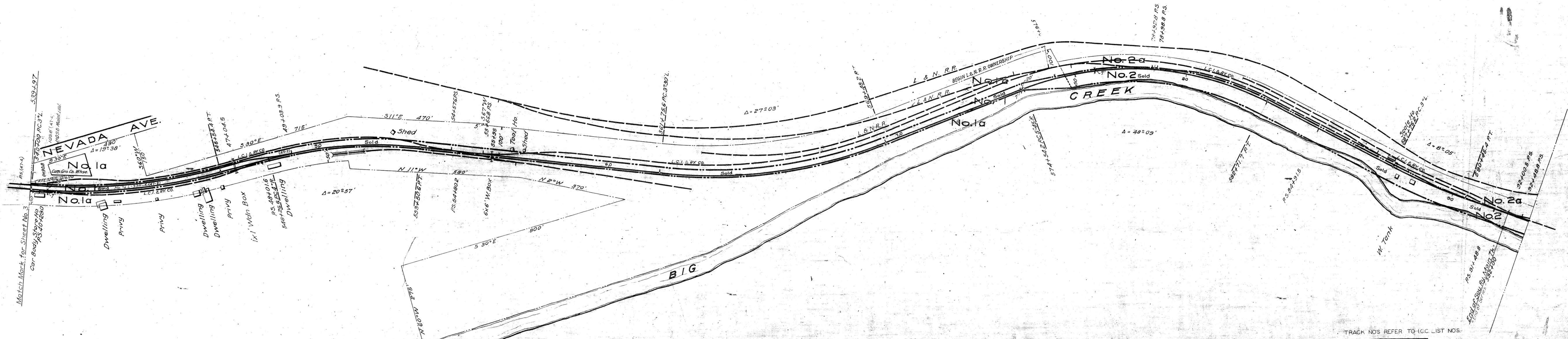


CAMPBELL COUNTY, TENN.

LA FOLLETTE, TENN.



THIS MAP WAS NOT PREPARED OR INTENDED FOR USE AS A REAL ESTATE TITLE MAP. THE RAILWAY COMPANY DOES NOT REPRESENT OR SUGGEST THAT THE PROPERTY LINES AND RIGHT-OF-WAY LINES SHOWN ON THE MAP ARE ACCURATE, OR THAT ANY OTHER INFORMATION ON THE MAP IS CORRECT. THE COMPANY DOES NOT REPRESENT THAT IT HAS CHECKED THIS MAP FOR ACCURACY.

TRACK NOS REFER TO ICC LIST NOS.

STATION MAP
SOUTHERN RAILWAY COMPANY
 Operated by the
SOUTHERN RAILWAY COMPANY

COSTER DIVISION
 STATION 539+97 TO STATION 592+77
 SCALE: 1 IN. = 100 FT. DECEMBER 31, 1927.

Office of Special Engineer
 Washington, D.C.

Abandoned Mar. 18, 1937.
 A.F.E. 69517 1/27



STATIONING REFERS TO ICC INVENTORY CHAINAGE - 1916
 R/W Tracks corrected to Dec. 31, 1933

007-043