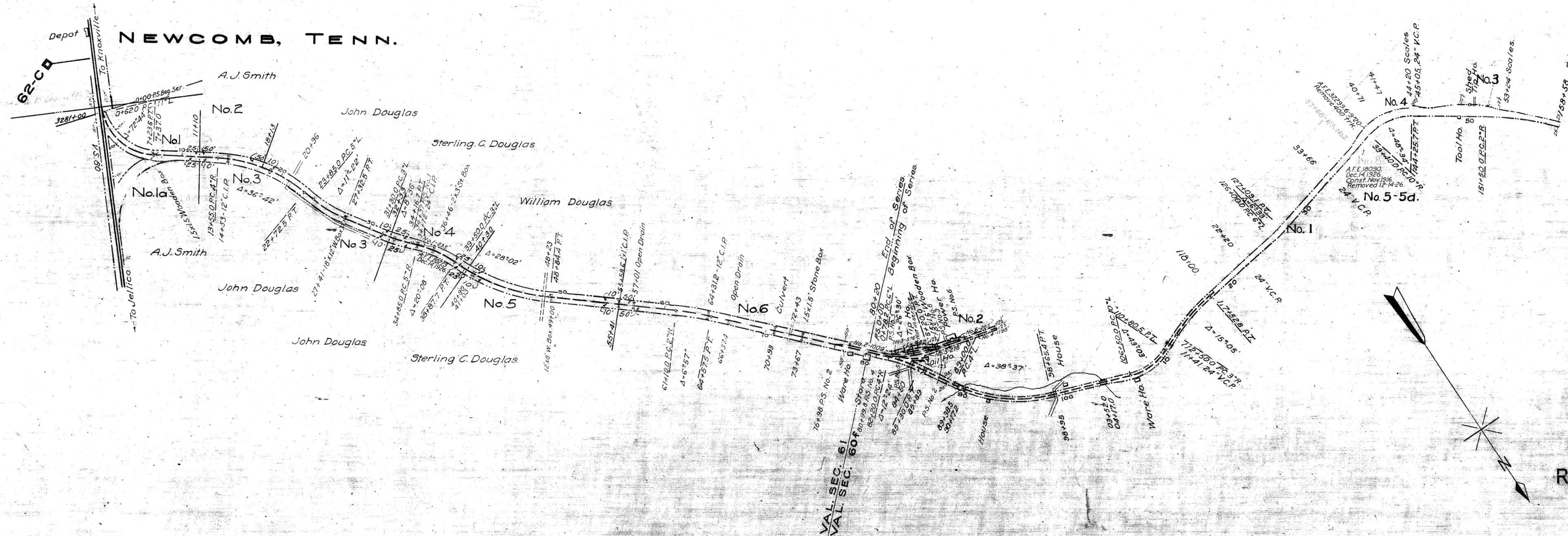


CAMPBELL COUNTY, TENN.



TRACK NOS. REFER TO I.C.C. LIST NOS.
RIGHT-OF-WAY AND TRACK MAP

SOUTHERN RAILWAY COMPANY
 Operated by the
SOUTHERN RAILWAY COMPANY
 COSTER DIVISION

STATION 80+20 TO STATION 118+00
 SCALE: 1 IN. = 400 FT. DECEMBER 31, 1927

Office of Special Engineer
 Washington, D.C.

THIS MAP WAS NOT PREPARED OR INTENDED FOR USE AS A REAL ESTATE TITLE MAP. THE RAILWAY COMPANY DOES NOT REPRESENT OR SUGGEST THAT THE PROPERTY LINES AND RIGHT-OF-WAY LINES SHOWN ON THE MAP ARE ACCURATE, OR THAT ANY OTHER INFORMATION ON THE MAP IS CORRECT. THE COMPANY DOES NOT REPRESENT THAT IT HAS CHECKED THIS MAP FOR ACCURACY.

007-044

STATIONING REFERS TO I.C.C. INVENTORY CHAINAGE 1916.

V.607
 2V.61

Tracks corrected to Dec. 31, 1927