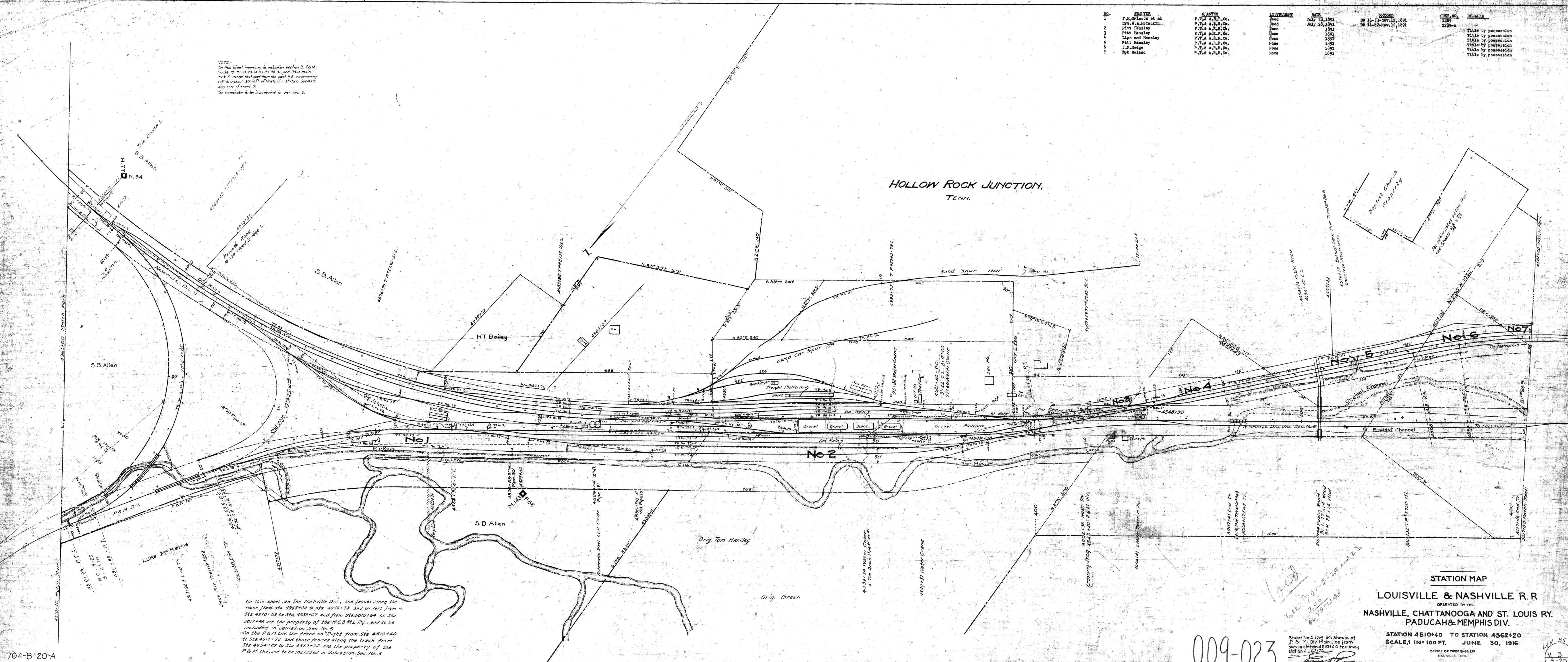


NO.	GRANTOR	GRANTEE	INSTRUMENT	DATE	RECORD	CASE NO.	REMARKS
1	F.H. Johnson et al	P.T.A. A.R.R.Co.	Deed	July 28, 1891	DB 11-73-Nov. 12, 1891	2289	Title by possession
2	W.A. Johnson	P.T.A. A.R.R.Co.	Deed	July 28, 1891	DB 11-82-Nov. 12, 1891	2289-A	Title by possession
3	Pitt Henaley	P.T.A. A.R.R.Co.	Deed	1891			Title by possession
4	Pitt Henaley	P.T.A. A.R.R.Co.	Deed	1891			Title by possession
5	Lipo and Henaley	P.T.A. A.R.R.Co.	Deed	1891			Title by possession
6	Pitt Henaley	P.T.A. A.R.R.Co.	Deed	1891			Title by possession
7	J.R. Hodges	P.T.A. A.R.R.Co.	Deed	1891			Title by possession

NOTE -  
On this sheet inventory to valuation section 3, P.M. tracks 17, 21, 23, 24, 26, 27, 28, 31, and P.M. main track 13 except that part from the east N.E. and westerly to a point 50' left of Nash. Div. station 5004+18 also 230' of track 18.  
The remainder to be inventoried to val. sec 6



704-B-20-A

On this sheet, on the Nashville Div., the fences along the track from sta. 4965+00 to sta. 4966+78 and on left from Sta. 4970+53 to Sta. 4983+07 and from Sta. 5010+64 to Sta. 5017+46 are the property of the N.C. & S.L. Ry., and to be included in Valuation Sec. No. 6.  
On the P.M. Div. the fence on right from Sta. 4810+40 to Sta. 4817+72 and those fences along the track from Sta. 4854+89 to Sta. 4855+22 are the property of the P.M. Div. and to be included in Valuation Sec. No. 3

CARROLL Co. TENN. CIVIL DISTRICT No 16

STATION MAP  
LOUISVILLE & NASHVILLE R.R.  
OPERATED BY THE  
NASHVILLE, CHATTANOOGA AND ST. LOUIS RY.  
PADUCAH & MEMPHIS DIV.

STATION 4510+40 TO STATION 4562+20  
SCALE: 1 IN = 100 FT. JUNE 30, 1916

OFFICE OF CHIEF ENGINEER  
NASHVILLE, TENN.

M.P. 85.7 TO 86.7  
HOLLOW ROCK JUNCTION

009-023

Sheet No. 520 of 93 sheets of  
P. & M. Div. Main Line from  
Survey Station 4504+0 to Survey  
Station 4562+20  
Valuation Engineer

LEN 95  
V. 3  
S-20