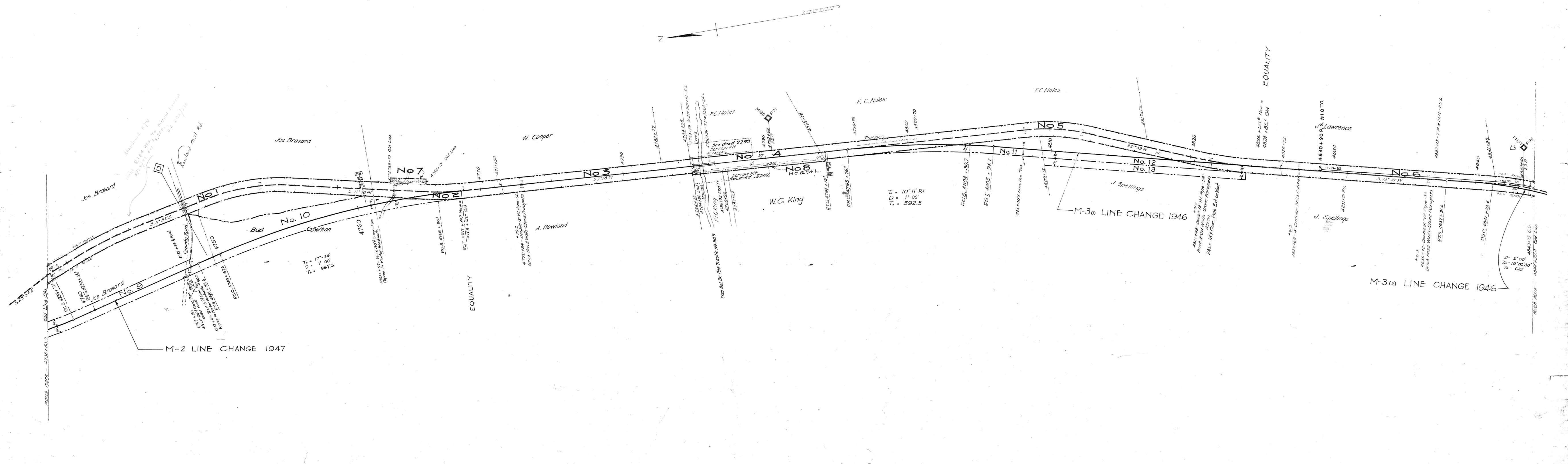


NO.	NAME	DATE	REMARKS	NO.	NAME	DATE	REMARKS
1	W.C. King	Jan. 10, 1893	Civ. Proc. 1st Circuit Court	1	W.C. King	Jan. 10, 1893	Civ. Proc. 1st Circuit Court
2	W.C. King	Jan. 10, 1893	Civ. Proc. 1st Circuit Court	2	W.C. King	Jan. 10, 1893	Civ. Proc. 1st Circuit Court
3	W.C. King	Jan. 10, 1893	Civ. Proc. 1st Circuit Court	3	W.C. King	Jan. 10, 1893	Civ. Proc. 1st Circuit Court
4	W.C. King	Jan. 10, 1893	Civ. Proc. 1st Circuit Court	4	W.C. King	Jan. 10, 1893	Civ. Proc. 1st Circuit Court
5	W.C. King	Jan. 10, 1893	Civ. Proc. 1st Circuit Court	5	W.C. King	Jan. 10, 1893	Civ. Proc. 1st Circuit Court
6	W.C. King	Jan. 10, 1893	Civ. Proc. 1st Circuit Court	6	W.C. King	Jan. 10, 1893	Civ. Proc. 1st Circuit Court

Also see deed 1811 J.P. Phillips to the Louisville & Nashville R.R. Co. Dec. 14, 1892, Pgs. 12, 13, 19



RIGHT-OF-WAY AND TRACK MAP
LOUISVILLE & NASHVILLE R.R.
 OPERATED BY THE
NASHVILLE, CHATTANOOGA AND ST. LOUIS RY.
PADUCAH & MEMPHIS DIV.

STATION 4738+53.9 TO STATION 4844+09.4
 SCALE, 1 IN. = 200 FT. JUNE 30, 1916
 OFFICE OF CHIEF ENGINEER
 NASHVILLE, TENN.
 M.P. 90.0 to 92.0

009-025