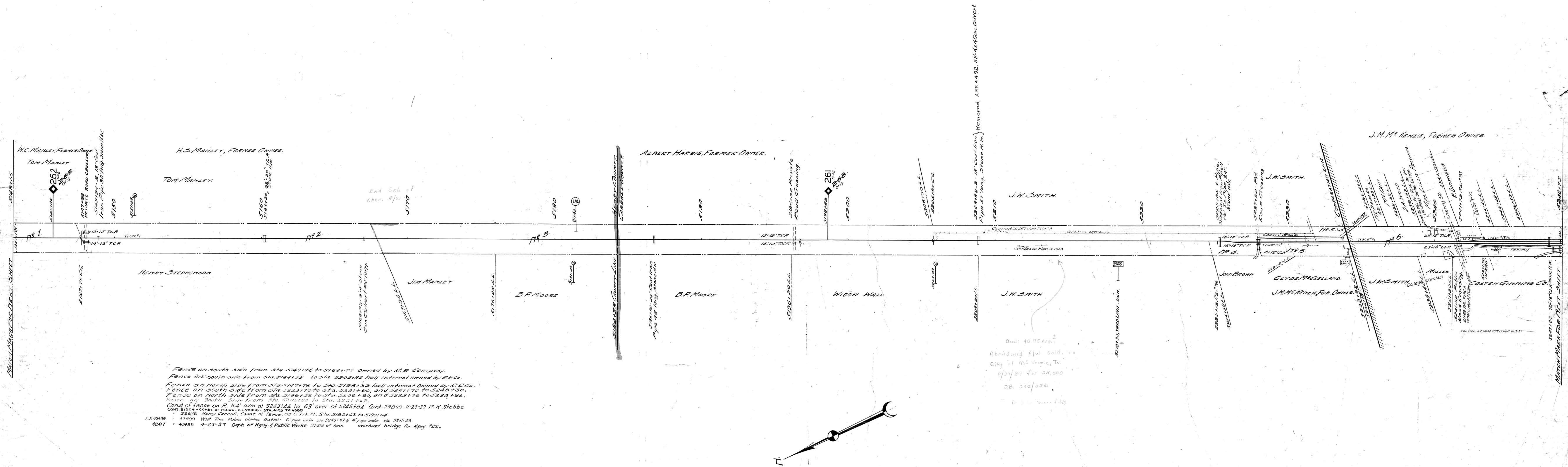


AFE	Date Completed	Description of Change
4825	4-30-1925	conc. Walk on Cherry Street
10612	3-31-28	Curb "
13363	11-30-29	" " " " " "
3727	4-9-29	Const. of Rk. Fence from sta. 5205180 to 5231132
11068	9-8-28	Inst. of Menapenny gauge at Cherry St.
4497	12-9-24	Const. of 54" x 44" conc. culvert to replace 2' 18" C.I. P. 57' long.
31225	3-15-43	"One mile to water etc." signpost.



Fence on south side from Sta. 5147176 to 5164155 owned by E.R. Company.  
 Fence on south side from Sta. 5164155 to Sta. 5205185 half interest owned by E.R.C.  
 Fence on north side from Sta. 5147176 to Sta. 5196132 half interest owned by E.R.C.  
 Fence on south side from Sta. 5223178 to Sta. 5231160, and 5241170 to 5248130.  
 Fence on north side from Sta. 5196132 to Sta. 5200180, and 5223178 to 5233132.  
 Fence on South Side from Sta. 5205180 to Sta. 5231132.  
 Const. of fence on R. 54' over of 5243144 to 63' over of 5245184. Cont. 29817 11-27-37 W.R. Stobbe  
 Cont. 31804 - Const. of fence - H. Young - Sta. 443 to 438  
 32676 Harry Conall. Const. of fence - 30' S. Trk #1, Sta. 518163 to 5190104  
 L.F. 43639 - 42599 West Tenn. Public Utilities District - 6" pipe under Sta. 5243147 & 4" pipe under Sta. 5241129  
 42417 - 43488 4-25-57 Dept. of Hwy. & Public Works - State of Tenn. overhead bridge for Hwy. #22.

Deed: 40.95 Ac. ±  
 Abandoned R/W sold to  
 City of Memphis, Tenn.  
 8/21/24 for 25,000  
 D.B. 240/056  
 D. 11-11-1923

Sheet No. 50 of 111 of Memphis Line from survey station  
 5143+15 to survey station 5248+75  
 Valuation Engineer

RIGHT OF WAY AND TRACK MAP  
 LOUISVILLE AND NASHVILLE R. R. CO.  
 MEMPHIS LINE  
 STATION 5143+15 TO STATION 5248+75  
 SCALE 1 INCH = 200 FT.

009-033

OFFICE OF CHIEF ENGINEER  
 LOUISVILLE, KY.