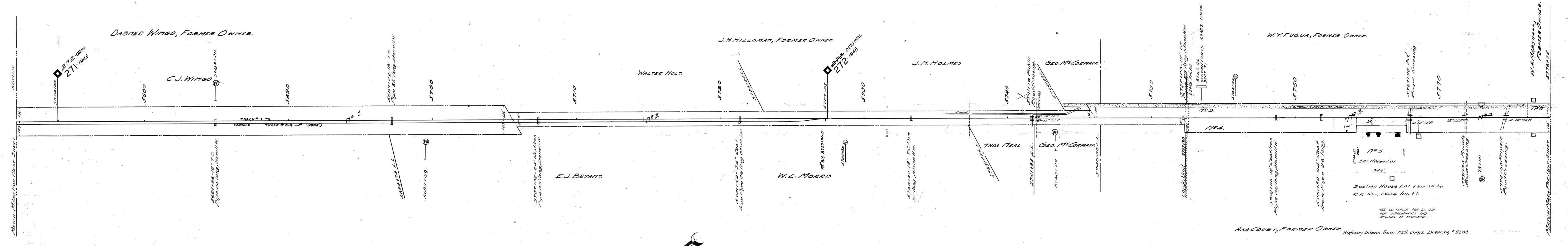
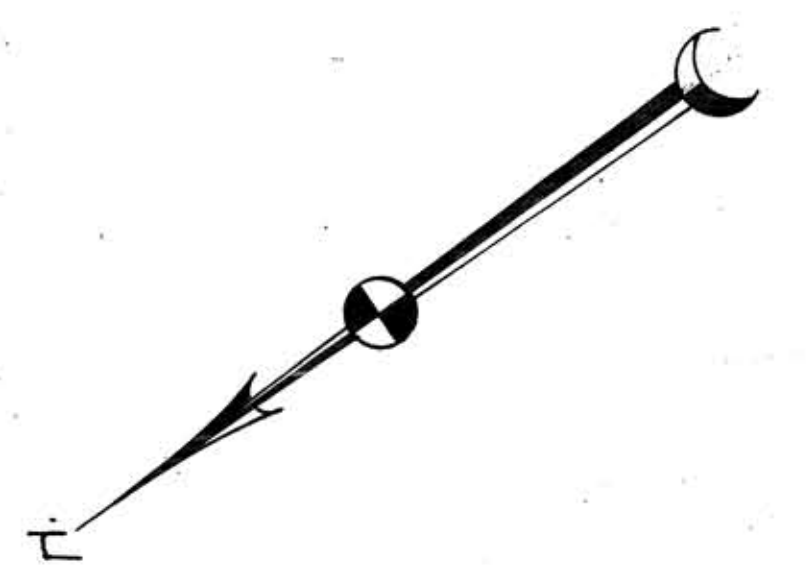


A.F.F. Date Comp. Description of Change
 21704 12-30-36 Sold par. 5
 60469 5-15-67 Const. of passing t.r.k. # 314



Fence on South side, 5697+20 to 5704+80.
 Fence on North side, 5671+15 to 5737+35.



Cont. 44957 12-8-58 West Tenn. Tel. Co. ~ Wire Under Trk. Sta 5737+31 — C.A.N.C. E-29-48
 " 45009 1-26-59 Carroll County Electrical Dept. ~ Wire X'ing over Sta 42+10

Sheet 119 55 of 111 of Memphis Line from survey station
 5671+15 to survey station 5776+75
 Valuation Engineer

RIGHT OF WAY AND TRACK MAP
 LOUISVILLE AND NASHVILLE R. R. CO.
 MEMPHIS LINE
 STATION 5671+15 TO STATION 5776+75

SCALE 1 INCH = 200 FT.
 OFFICE OF CHIEF ENGINEER
 LOUISVILLE, KY.

009-038

