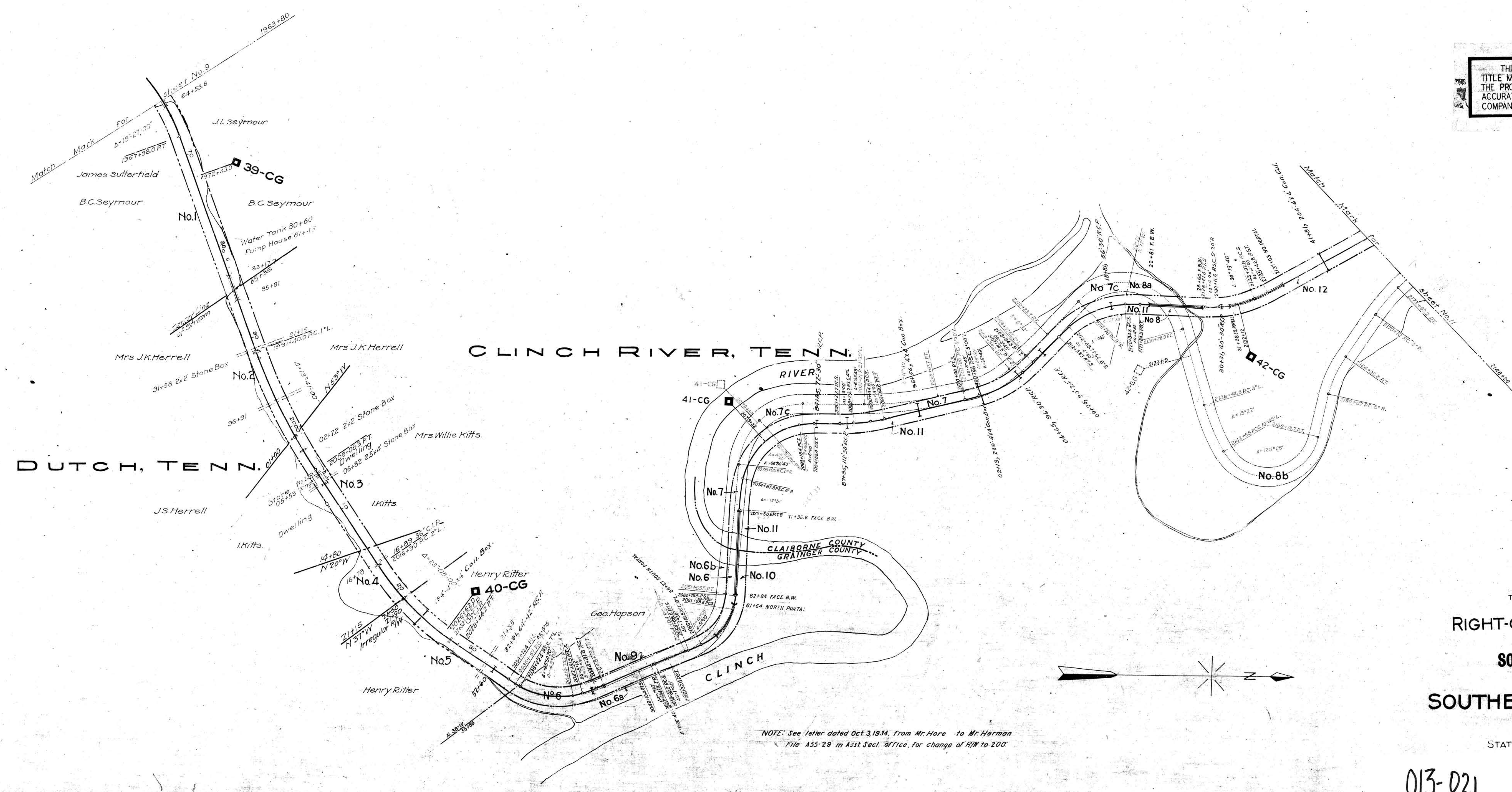


THIS MAP WAS NOT PREPARED OR INTENDED FOR USE AS A REAL ESTATE TITLE MAP. THE RAILWAY COMPANY DOES NOT REPRESENT OR SUGGEST THAT THE PROPERTY LINES AND RIGHT-OF-WAY LINES SHOWN ON THE MAP ARE ACCURATE, OR THAT ANY OTHER INFORMATION ON THE MAP IS CORRECT. THE COMPANY DOES NOT REPRESENT THAT IT HAS CHECKED THIS MAP FOR ACCURACY.



NOTE: See letter dated Oct. 3, 1934, from Mr. Hore to Mr. Herman File A55-29 in Asst. Sect. Office, for change of R/W to 200'

TRACK NOS REFER TO I.C.C. LIST NOS.

**RIGHT-OF-WAY AND TRACK MAP**  
**SOUTHERN RAILWAY COMPANY**  
 Operated by the  
**SOUTHERN RAILWAY COMPANY**  
 COSTER DIVISION

STATION 1963+80 TO STATION 2175+00  
 SCALE 1 IN. = 400 FT. DECEMBER 31, 1927

Office of Chief Engineer  
 Washington, D.C.

013-021

V.59  
 10