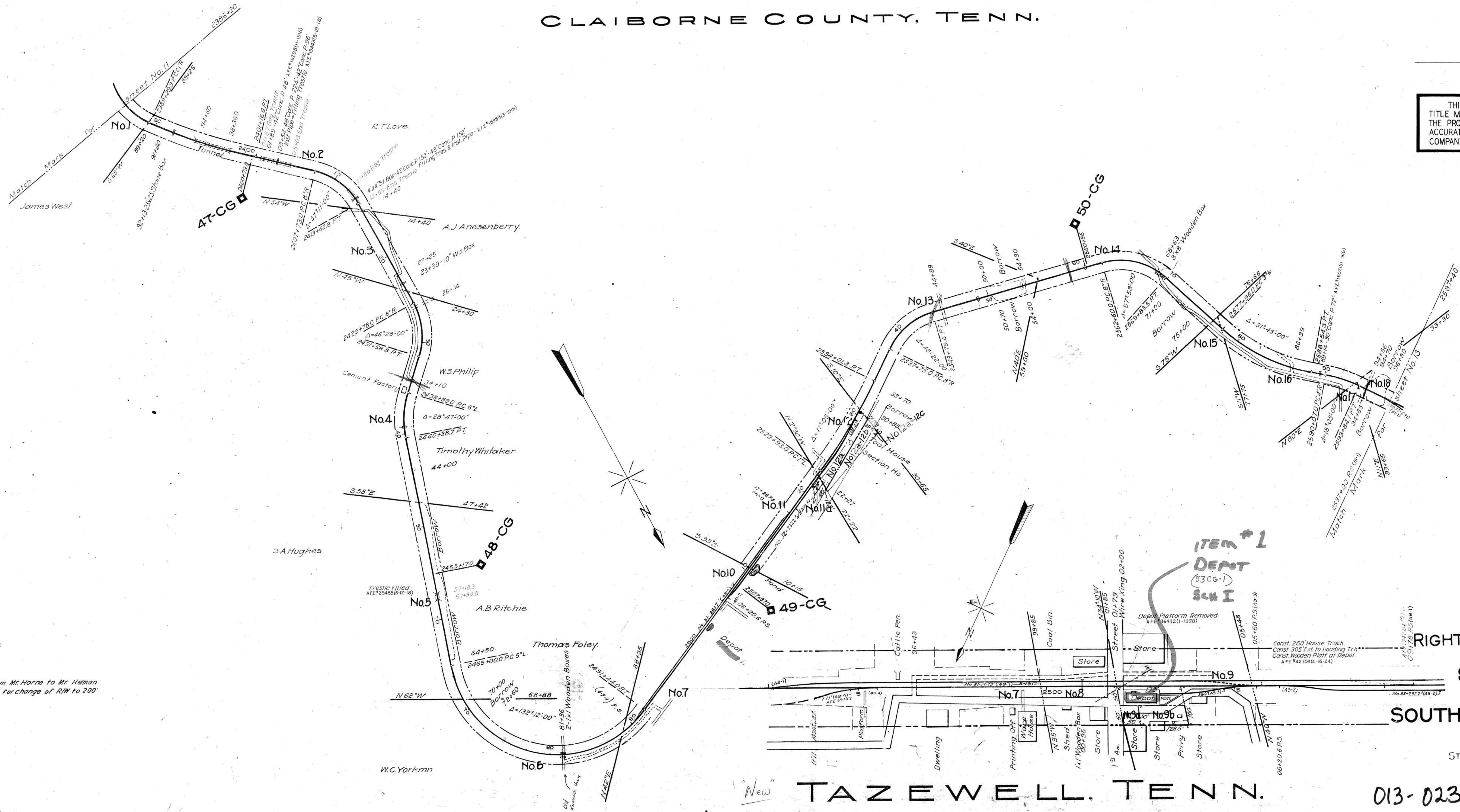


CLAIBORNE COUNTY, TENN.

THIS MAP WAS NOT PREPARED OR INTENDED FOR USE AS A REAL ESTATE TITLE MAP. THE RAILWAY COMPANY DOES NOT REPRESENT OR SUGGEST THAT THE PROPERTY LINES AND RIGHT-OF-WAY LINES SHOWN ON THE MAP ARE ACCURATE, OR THAT ANY OTHER INFORMATION ON THE MAP IS CORRECT. THE COMPANY DOES NOT REPRESENT THAT IT HAS CHECKED THIS MAP FOR ACCURACY.



NOTE: See letter dated Oct 3, 1934, from Mr. Horne to Mr. Haman File 155-29 in Asst. Sect. office for change of R/W to 200'

TRACK NOS. REFER TO I.C.C. LIST NOS.

RIGHT-OF-WAY AND TRACK MAP

SOUTHERN RAILWAY COMPANY

Operated by the

SOUTHERN RAILWAY COMPANY

COSTER DIVISION

STATION 2386+20 TO STATION 2597+40

SCALE 1 IN. = 400 FT. DECEMBER 31, 1927

Office of Special Engineer
Washington, D.C.

TAZEWELL, TENN.

013-023

STATIONING REFERS TO I.C.C. INVENTORY CHAINAGE 1916

Tracks corrected to Dec 31, 1940

