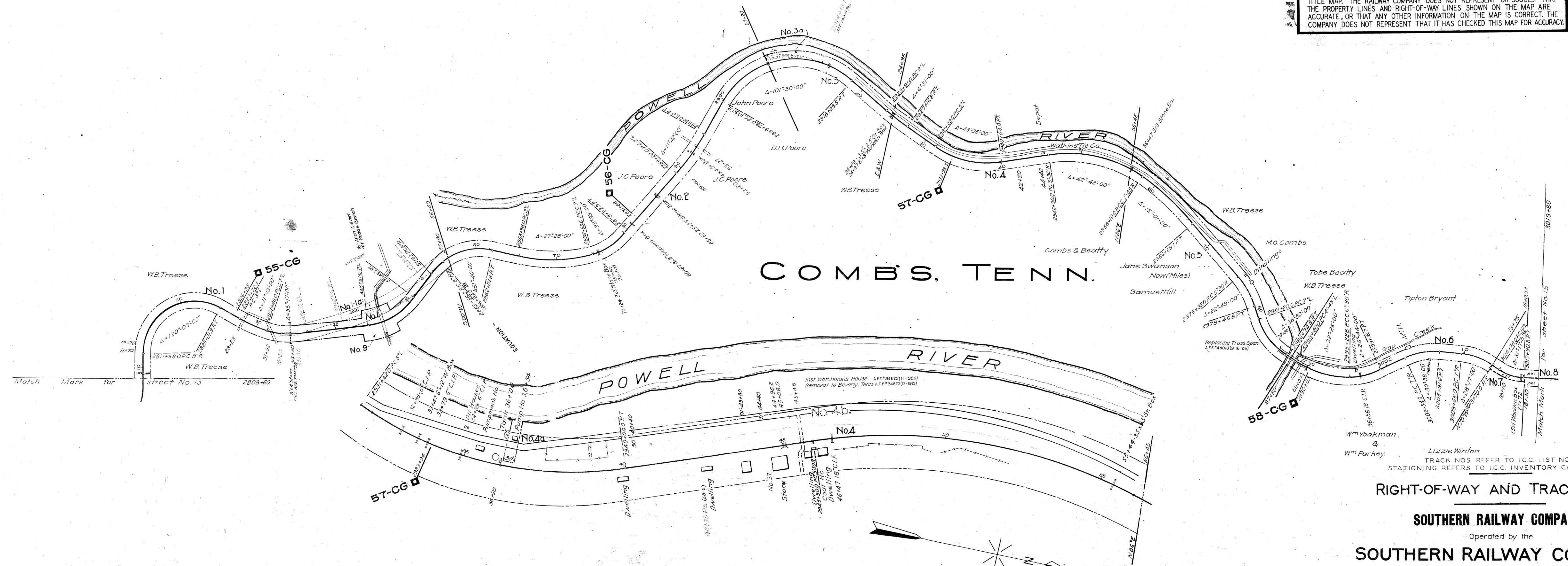


CLAIBORNE COUNTY, TENN.

THIS MAP WAS NOT PREPARED OR INTENDED FOR USE AS A REAL ESTATE TITLE MAP. THE RAILWAY COMPANY DOES NOT REPRESENT OR SUGGEST THAT THE PROPERTY LINES AND RIGHT-OF-WAY LINES SHOWN ON THE MAP ARE ACCURATE, OR THAT ANY OTHER INFORMATION ON THE MAP IS CORRECT. THE COMPANY DOES NOT REPRESENT THAT IT HAS CHECKED THIS MAP FOR ACCURACY.

COMB'S, TENN.



Match Mark for sheet No. 13 2808+60

Match Mark for sheet No. 15 3019+80

NOTE: See letter dated Oct. 3, 1934, from Mr. Horne to Mr. Herman File 455-29 in Asst. Sect. office, for change of R/W to 200'

RIGHT-OF-WAY AND TRACK MAP
 SOUTHERN RAILWAY COMPANY
 Operated by the
 SOUTHERN RAILWAY COMPANY
 COSTER DIVISION

STATION 2808+60 TO STATION 3019+80
 SCALE 1 IN. = 400 FT. DECEMBER 31, 1927

013-025

Office of Chief Engineer
 Washington, D.C.