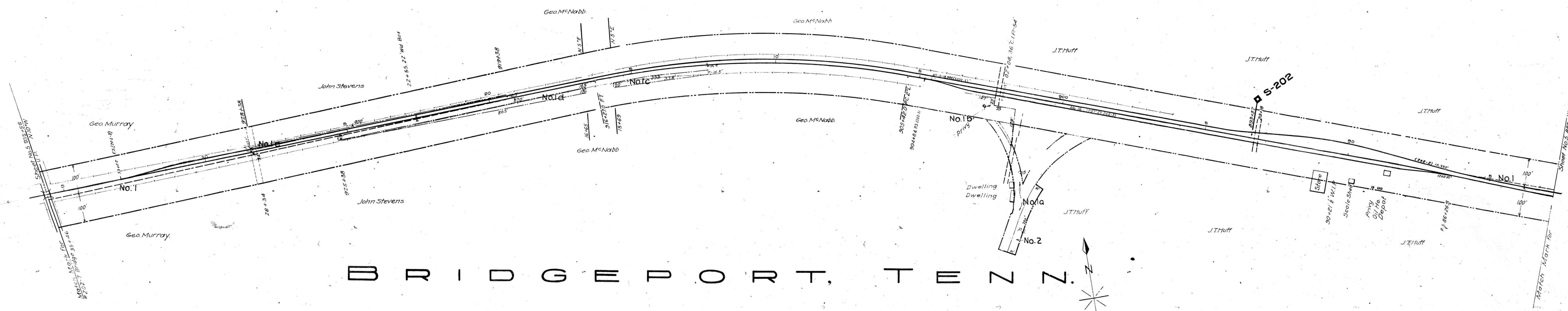


COCKE COUNTY, TENN.

BRIDGEPORT, TENN.



TRACK NOS. REFER TO I.C.C. LIST NOS.

STATION MAP
SOUTHERN RAILWAY COMPANY
 Operated by the
SOUTHERN RAILWAY COMPANY
 KNOXVILLE DIVISION

STATION 882 + 76 TO STATION 935 + 56

SCALE 1 IN. = 100 FT. DECEMBER 31, 1927

Office of Special Engineer
Washington, D.C.

STATIONING REFERS TO I.C.C. INVENTORY CHAINAGE - 1916

THIS MAP WAS NOT PREPARED OR INTENDED FOR USE AS A REAL ESTATE TITLE MAP. THE RAILWAY COMPANY DOES NOT REPRESENT OR SUGGEST THAT THE PROPERTY LINES AND RIGHT-OF-WAY LINES SHOWN ON THE MAP ARE ACCURATE, OR THAT ANY OTHER INFORMATION ON THE MAP IS CORRECT. THE COMPANY DOES NOT REPRESENT THAT IT HAS CHECKED THIS MAP FOR ACCURACY.

015-008

V.58
S5

Tracks corrected to Dec. 31, 1923