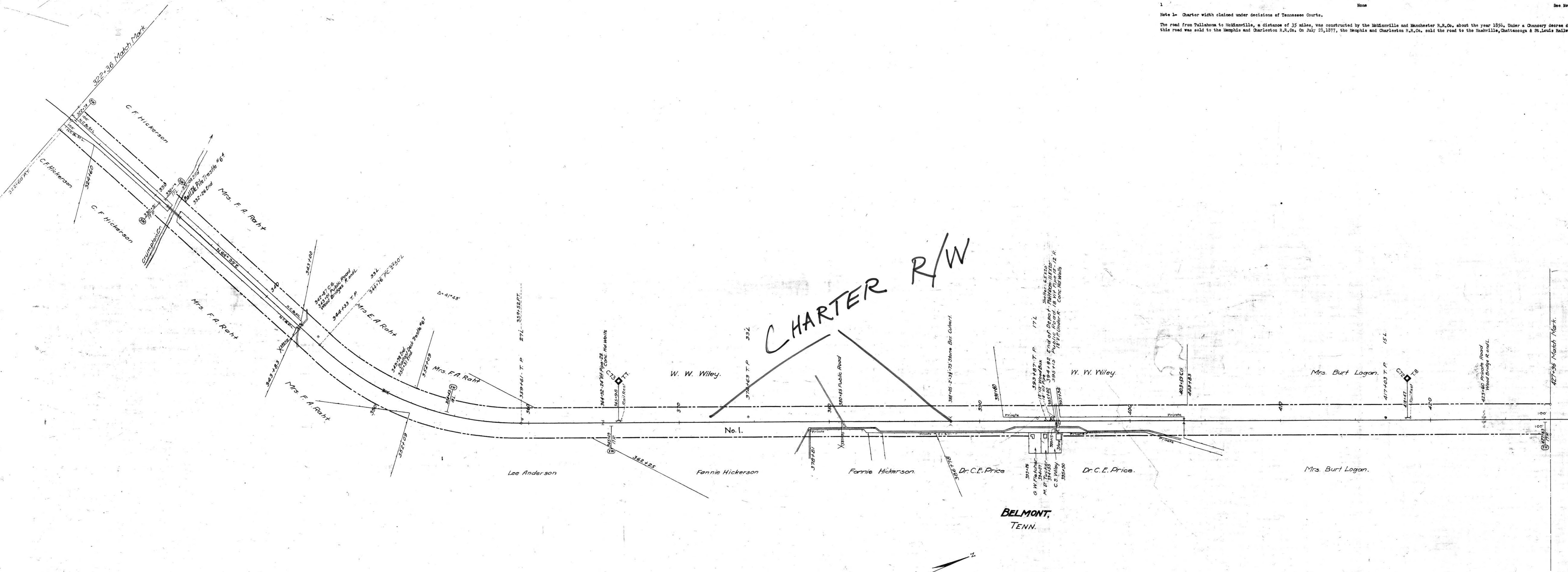


NO.	GRANTOR	GRANTEE	INSTRUMENT	DATE	RECORD	CURT. NO.	REMARKS
1			None				See Note 1

Note 1- Charter width claimed under decisions of Tennessee Courts.
 The road from Tullahoma to McMinnville, a distance of 35 miles, was constructed by the McMinnville and Manchester R.R.Co. about the year 1856. Under a Chancery decree dated July 10, 1875 this road was sold to the Memphis and Charleston R.R.Co. On July 25, 1877, the Memphis and Charleston R.R.Co. sold the road to the Nashville, Chattanooga & St. Louis Railway.



CHARTER R/W

BELMONT, TENN.

RIGHT-OF-WAY AND TRACK MAP

**NASHVILLE, CHATTANOOGA AND ST. LOUIS RY.
 SPARTA BRANCH**

STATION 322+36 TO STATION 427+96
 SCALE, 1 IN. = 200 FT. JUNE 30, 1916

Sheet No. 4 of 44 Sheets of
 Sparta Branch from survey
 station 322+36 to survey station
 427+96
 J. W. [Signature]
 Station Engineer

M.P. 6.2 to 8.2

016-004