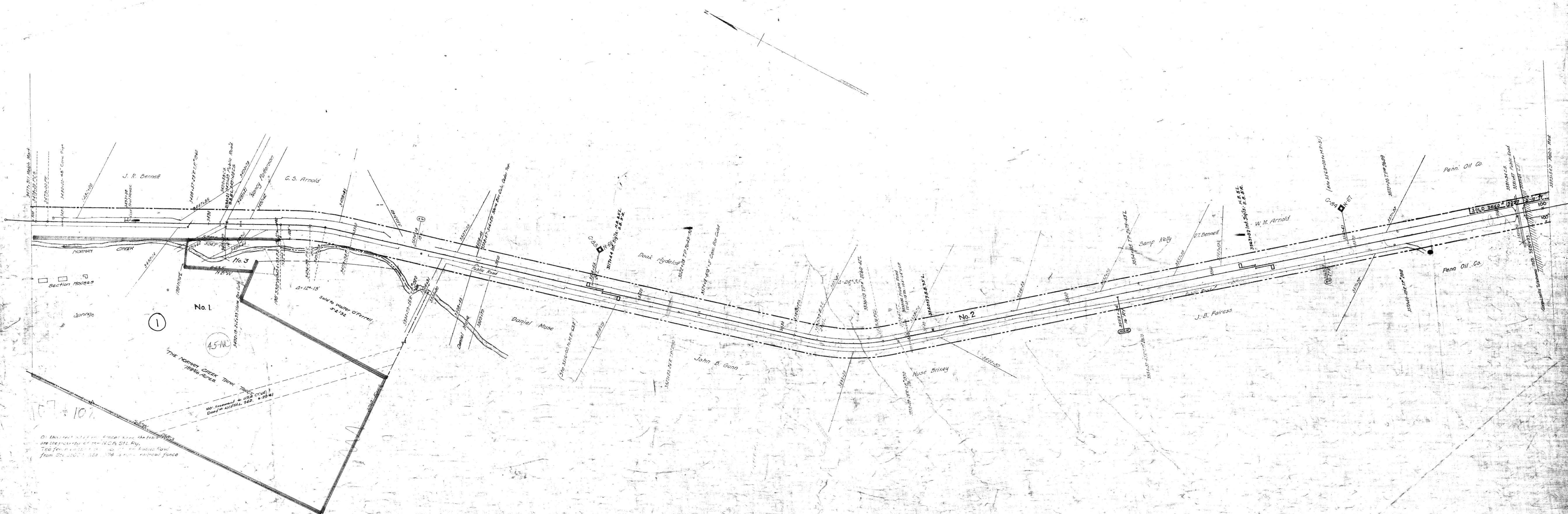


NO.	GRANTOR	GRANTEE	INSTRUMENT	DATE	BOOK	PAGE	REMARKS
1	W.H. Murray and J.H. Cotton	N.C. C.R.R. Co.	Deed	Oct. 5, 1872	D. B. 25-224-20, 1872	962	See Note 1
2	W.A. Seagraves	N.C. & St. L. Ry.	W. Deed	Jan. 1, 1917	D. B. 25-224 - Feb. 20, 1917	3628	

NOTE 1- Charter width claimed under decisions of Tennessee Courts.



RIGHT-OF-WAY AND TRACK MAP
 NASHVILLE, CHATTANOOGA AND ST. LOUIS RY.
 CHATTANOOGA DIVISION
 STATION 3477+91 TO STATION 3583+54.9
 SCALE, 1 IN. = 200 FT. JUNE 30, 1916
 OFFICE OF CHIEF ENGINEER
 NASHVILLE, TENN.
 M.P. 653 to 673

016-014

COFFEE CO. TENN.

Sheet No. 38 of 73 sheets of
 Chattanooga Division from Survey
 Station 3477+91 to Survey Station
 3583+54.9
 Chief Engineer