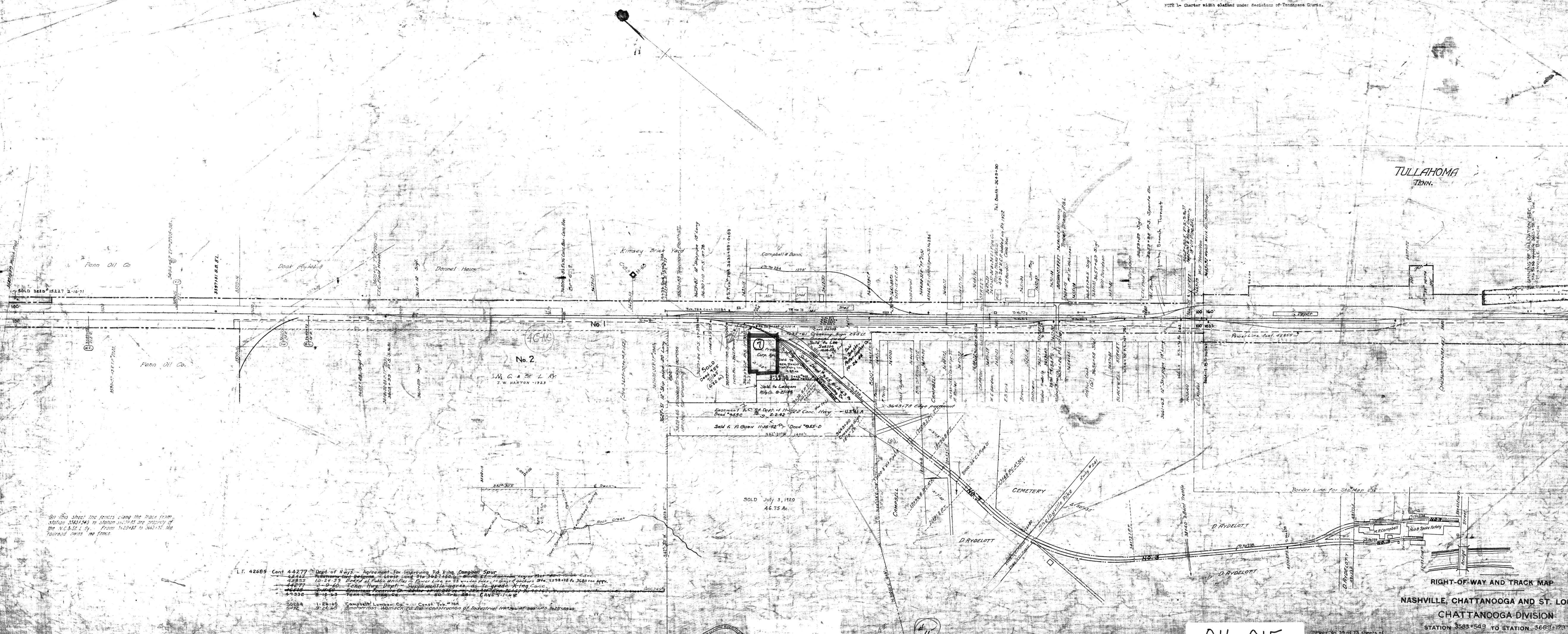


5115 Changes in 74-77 for CTC
 5287 Re-L.O.M. in 74-77
 5780 Const. Twp. 78A
 6179 Const. Twp. 78A
 6758 Const. Twp. 78A extension to 78-79

GRANUP
 2.1.1896 as at
 P.C. 241.8
 INSTRUMENT
 No. 241.8
 Date
 Oct. 11, 1896
 RECORD
 No. 7-29-04.13.190
 95
 SEE NOTE 1



TULLAHOMA TENN.

- L.F. 4285 Cont. 44277 Dept. of Hays - Agreement for Improving Rd. King Campbell Spur
 44277 10-24-23
 44278 10-24-23
 44279 10-24-23
 44280 10-24-23
 44281 10-24-23
 44282 10-24-23
 44283 10-24-23
 44284 10-24-23
 44285 10-24-23
 44286 10-24-23
 44287 10-24-23
 44288 10-24-23
 44289 10-24-23
 44290 10-24-23
 44291 10-24-23
 44292 10-24-23
 44293 10-24-23
 44294 10-24-23
 44295 10-24-23
 44296 10-24-23
 44297 10-24-23
 44298 10-24-23
 44299 10-24-23
 44300 10-24-23

016-015

RIGHT-OF-WAY AND TRACK MAP
 NASHVILLE, CHATTANOOGA AND ST. LOUIS RY.
 CHATTANOOGA DIVISION
 STATION 3583+54.9 TO STATION 3683+17.3
 SCALE 1 IN. = 200 FT. JUNE 30, 1916
 OFFICE OF SURVEY ENGINEER
 NASHVILLE, TENN.
 M.P. 673 to 692