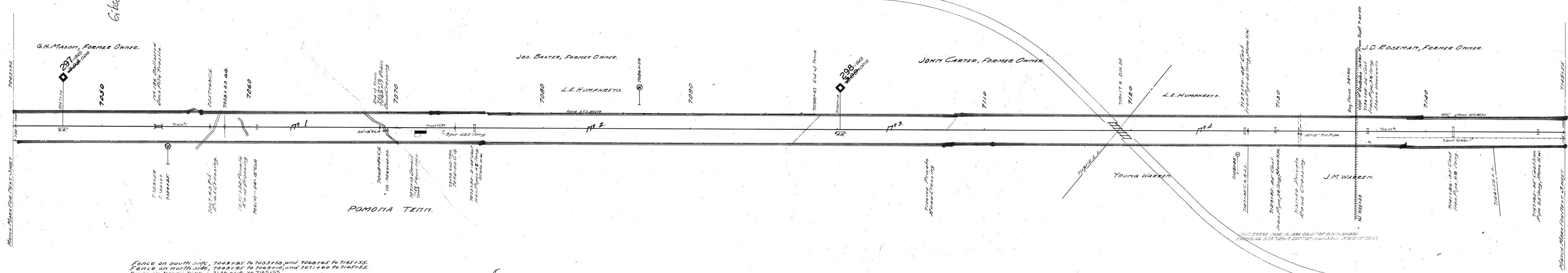


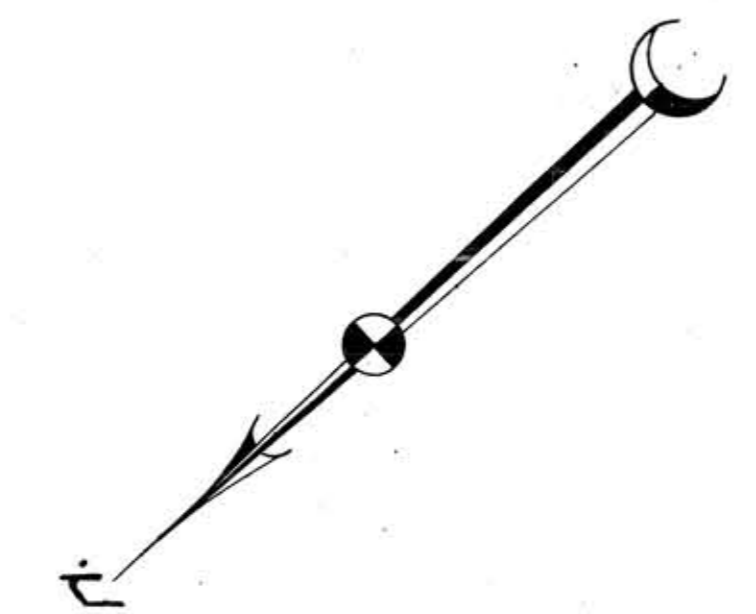
A.F.E. No.	Date Completed	Description of Change
3653	1-21-23	40' 1/2" to full street
18952	7-20-30	const of O.H. Br. Sta 7119+7
21236	10-29-36	Trk 23A. Ret.
40311	5-28-51	Const. Fence for T.H. Humphreys
40278	5-28-51	" " " J.B. Humphreys

Gibson Co Line



Fence on south side, 7043+95 to 7053+50 and 7068+65 to 7145+55;
 Fence on north side, 7043+95 to 7049+10 and 7071+60 to 7145+55;
 Fence on north side, 7126+54 to 7145+55

CONT. NO.	DATE	DESCRIPTION
1940-25	3-26-50	T.H. Humphreys - Fence
1940-25	3-14-51	Jones & Humphrey - Fence on S side of track Sta 7068+70 to 7098+43
25232	6-13-63	T.H. Humphreys - Sta 7124+90 to 7170+102 Tenn. Hwy. Dept. - Agree. as to widening O.H. Bridge at Sta. 7119+17



Sheet 1968 of 111 of Memphis Line from survey station
 7043+95 to survey station 7145+55
 Valuation Engineer

RIGHT OF WAY AND TRACK MAP
 LOUISVILLE AND NASHVILLE R. R. CO.
 MEMPHIS LINE
 STATION 7043+95 TO STATION 7145+55

SCALE 1 INCH = 200 FT.
 OFFICE OF CHIEF ENGINEER
 LOUISVILLE, KY.

017-016

V.25
 G.B.