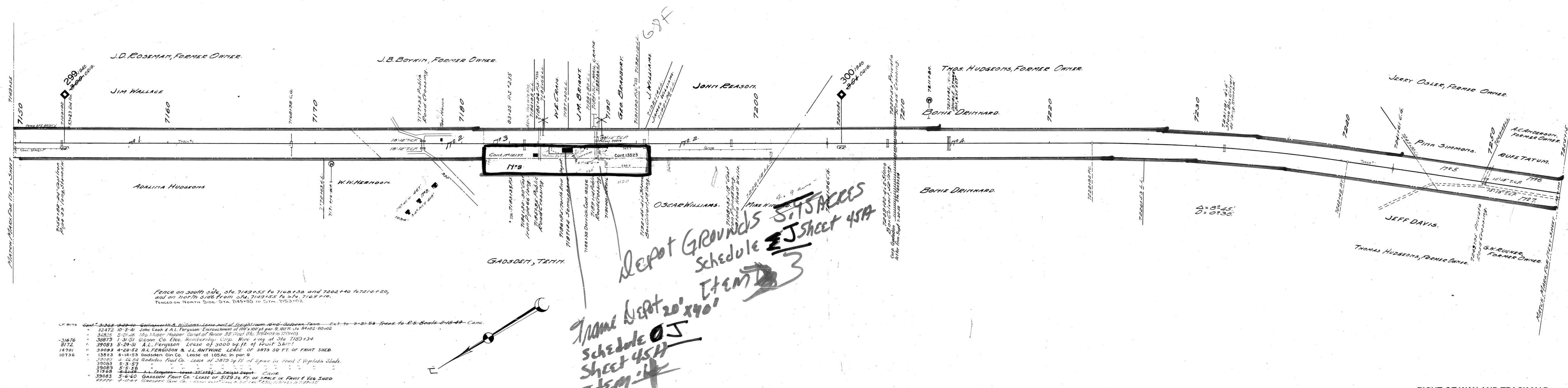


A.F.E. No. Date Comp. Description of Change
 12618 5-31-29 Ref. of track pens
 20089 1-14-46 3/4" dia. pins
 40311 5-28-51 Const. Fence for T.H. Humphreys
 42263 6-27-52 Ref. Trk #236 and station Trk #235
 46818 6-15-57 Ref. Screening platform 7183+39.



Fence on south side, Sta. 7149+55 to 7168+38 and 7202+40 to 7214+20, and on north side from Sta. 7149+55 to Sta. 7169+10. TANGLED ON NORTH SIDE. STA. 7149+55 TO STA. 7153+10.

LF 8172 Cont. 31268-3240 - Williams, Lease of 100 ft. of right of way from 1046 Gadsden Farm - Ext. to 3-31-54 Trans. to R.S. Book 2-10-49 - Canc.

32472	10-3-41	John Cook & A.L. Ferguson	Encroachment of 100 x 100 ft. per 9 100 ft. 84162-85102
32825	5-21-46	Mrs. Mader Hopper	Const. of fence 39 West St. 718400 to 720400
30879	1-31-51	Gilson Co. Elec. Membership Corp.	Wire along Sta. 7100+34
39083	5-29-51	A.L. Ferguson	Lease of 3000 sq. ft. of Fruit Shed
18791	4-28-52	R.L. Ferguson & J.L. Antoine	Lease of 3875 sq. ft. of Fruit Shed
13523	6-14-53	Gadsden Oil Co.	Lease of 105 Ac. in par. 9
39063	4-26-54	Gadsden Fruit Co.	Lease of 3875 sq. ft. of space in Fruit & Vegetable Shed
39063	5-3-57		
39063	5-5-58		
31968	5-1-58		
39083	5-6-60	Gadsden Fruit Co.	Lease of 5129 sq. ft. of space in Fruit & Veg. Shed
39077	4-17-64	Gadsden Oil Co.	Lease of 105 Ac. in par. 9, 100 ft. 84162-85102

Handwritten: Depot Grounds Schedule EJ Sheet 45A
 5.05 ACRES
 20' x 40' ITEM 3
 4.9 acres
 3
 4

Sheet 12669 of 111 of Memphis Line from survey station 7149+38 to survey station 7255+15
 Valuation Engineer

RIGHT OF WAY AND TRACK MAP
 LOUISVILLE AND NASHVILLE R. R. CO.
 MEMPHIS LINE
 STATION 7149+55 TO STATION 7255+15
 SCALE 1 INCH = 200 FT.
 OFFICE OF CHIEF ENGINEER,
 LOUISVILLE, KY.

017-017