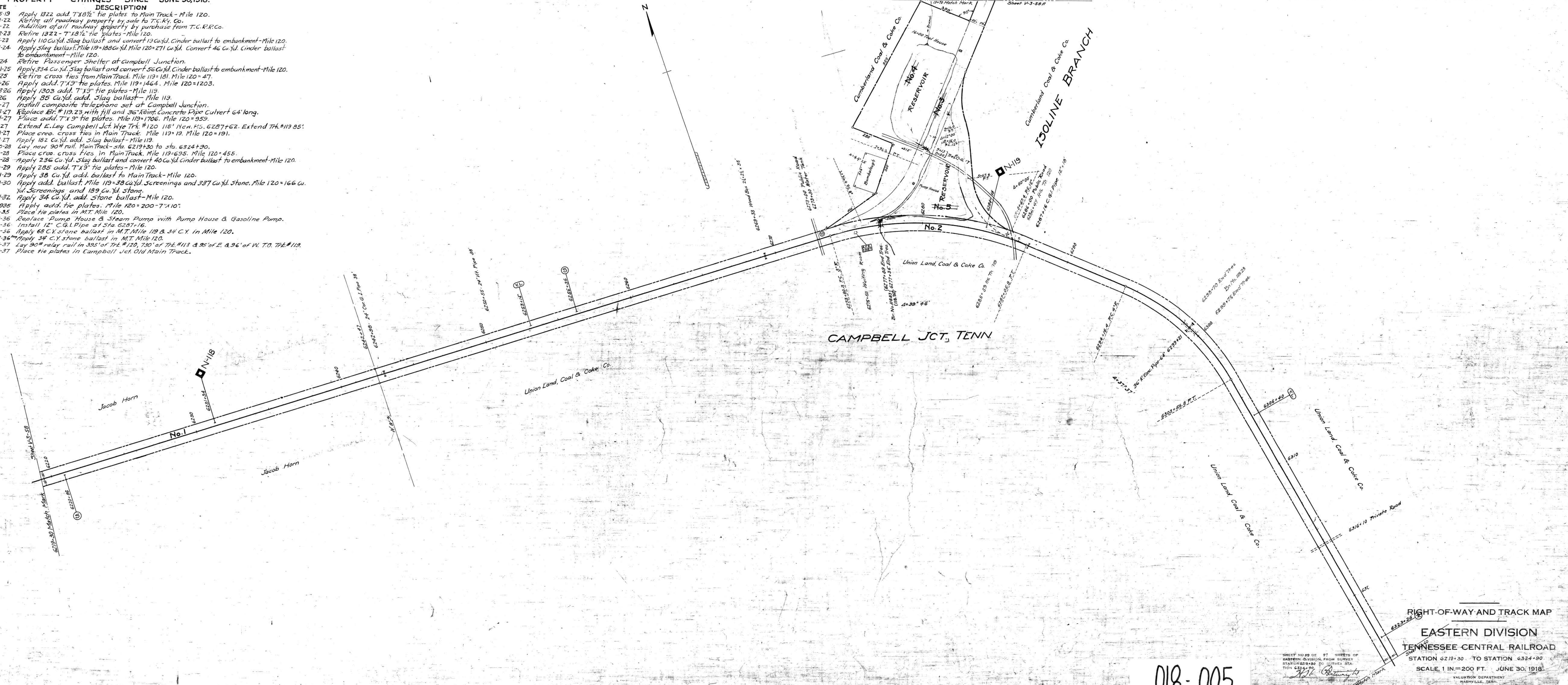


A.F.E. No.	DATE	DESCRIPTION
369	4-25-19	Apply 1322 add. T X 8 1/2" tie plates to Main Track - Mile 120.
701	1-31-22	Retire all roadway property by sale to T.C. Ry. Co.
53	2-1-22	Addition of all roadway property by purchase from T.C. R.R. Co.
22	6-22-23	Retire 1322 - T X 8 1/2" tie plates - Mile 120.
1020	12-31-23	Apply 110 Cu.Yd. Slag ballast and convert 13 Cu.Yd. Cinder ballast to embankment - Mile 120.
1020	12-31-24	Apply Slag ballast, Mile 119 = 188 Cu.Yd. Mile 120 = 271 Cu.Yd. Convert 46 Cu.Yd. Cinder ballast to embankment - Mile 120.
1387	1924	Retire Passenger Shelter at Campbell Junction.
1020	12-31-25	Apply 334 Cu.Yd. Slag ballast and convert 56 Cu.Yd. Cinder ballast to embankment - Mile 120.
1366	1925	Retire cross ties from Main Track, Mile 119 = 181, Mile 120 = 47.
495	6-12-26	Apply add. 7 X 9" tie plates, Mile 119 = 1464, Mile 120 = 1203.
242	12-13-26	Apply 1303 add. 7 X 9" tie plates - Mile 119.
1020	1926	Apply 85 Cu.Yd. add. Slag ballast - Mile 119.
528	5-21-27	Install composite telephone set at Campbell Junction.
556	7-25-27	Replace Br. # 119.23 with fill and 36" diam. Concrete Pipe Culvert 64' long.
631	8-31-27	Place add. 7 X 9" tie plates, Mile 119 = 1706, Mile 120 = 959.
768	12-1-27	Extend E. Leg Campbell Jct. Wye Trk. # 120 115' New P.S. 6287+62. Extend Trk. # 119 85'.
967	12-31-27	Place cross ties in Main Track, Mile 119 = 19, Mile 120 = 191.
1020	12-31-27	Apply 182 Cu.Yd. add. Slag ballast - Mile 119.
903	12-20-28	Lay new 90" rail, Main Track - sta. 6219+30 to sta. 6324+30.
968	12-31-28	Place cross ties in Main Track, Mile 119 = 695, Mile 120 = 455.
1020	12-31-28	Apply 236 Cu.Yd. Slag ballast and convert 40 Cu.Yd. Cinder ballast to embankment - Mile 120.
693	2-10-29	Apply 285 add. T X 9" tie plates - Mile 120.
992	12-31-29	Apply 38 Cu.Yd. add. ballast to Main Track - Mile 120.
1114	12-31-30	Apply add. ballast, Mile 119 = 38 Cu.Yd. Screenings and 337 Cu.Yd. Stone, Mile 120 = 166 Cu.Yd. Screenings and 189 Cu.Yd. Stone.
1353	12-31-32	Apply 34 Cu.Yd. add. Stone ballast - Mile 120.
1298	Apr. 1935	Apply add. tie plates, Mile 120 = 200 - 7 X 10".
1666	12-31-35	Place tie plates in M.T. Mile 120.
1853	10-30-36	Replace Pump House & Steam Pump with Pump House & Gasoline Pump.
1851	11- -36	Install 12" C.G.I. Pipe at Sta. 6287+16.
1736	12- -36	Apply 68 C.Y. Stone ballast in M.T. Mile 119 & 34 C.Y. in Mile 120.
1870	3-31-36	Apply 34 C.Y. Stone ballast in M.T. Mile 120.
1863	4-27-37	Lay 90" relay rail in 305' of Trk. # 120, 730' of Trk. # 118 & 95' of E. & 96' of W. T.O. Trk. # 119.
1873	12-31-37	Place tie plates in Campbell Jct. Old Main Track.



018-005

RIGHT-OF-WAY AND TRACK MAP  
 EASTERN DIVISION  
 TENNESSEE CENTRAL RAILROAD  
 STATION 6218+30 TO STATION 6324+30  
 SCALE 1 IN. = 200 FT. JUNE 30, 1918  
 VALUATION DEPARTMENT  
 NASHVILLE, TENN.