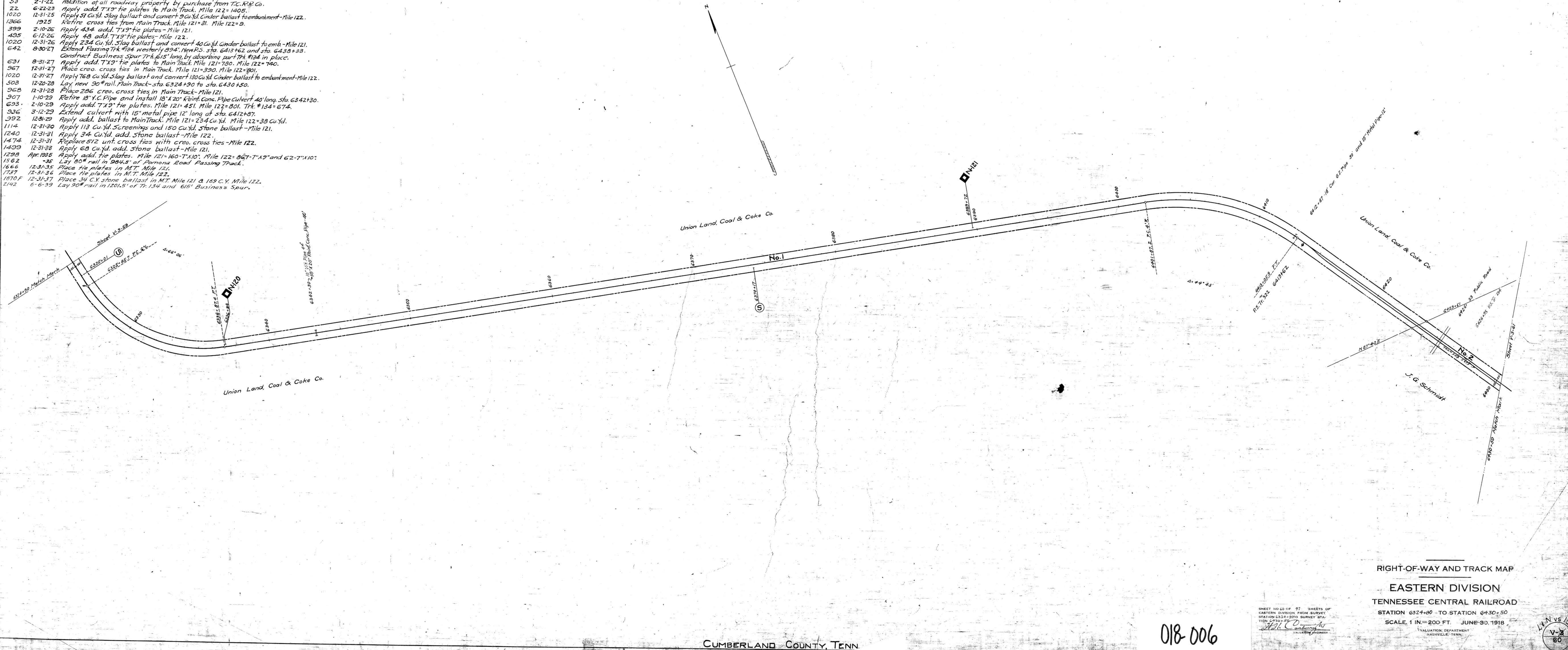


A.F.E. No.	DATE	PROPERTY CHANGES SINCE JUNE 30, 1918.	DESCRIPTION
701	1-3-22	Retire all roadway property by sale to T.C.R. Co.	
53	2-1-22	Abolition of all roadway property by purchase from T.C.R. Co.	
22	6-22-23	Apply add. 7'x9" tie plates to Main Track, Mile 122+140.5.	
1020	12-31-25	Apply 51 Cu.Yd. Slag ballast and convert 50 Cu.Yd. Cinder ballast to embankment-Mile 122.	
1366	1925	Retire cross ties from Main Track, Mile 121+31. Mile 122+9.	
399	2-10-26	Apply 434 add. 7'x9" tie plates-Mile 121.	
495	6-12-26	Apply 48 add. 7'x9" tie plates-Mile 122.	
1020	12-31-26	Apply 234 Cu.Yd. Slag ballast and convert 40 Cu.Yd. Cinder ballast to emb.-Mile 121.	
642	8-30-27	Extend Passing Trk #134 westerly 394'. New P.S. sta. 6413+62 and sta. 6438+33.	
631	8-31-27	Construct Business Spur 774.615' long by absorbing part Trk #134 in place.	
967	12-31-27	Apply add. 7'x9" tie plates to Main Track, Mile 121+790. Mile 122+740.	
1020	12-31-27	Place creos. cross ties in Main Track, Mile 121+390. Mile 122+801.	
1020	12-31-27	Apply 768 Cu.Yd. Slag ballast and convert 130 Cu.Yd. Cinder ballast to embankment-Mile 122.	
508	12-20-28	Lay new 90" rail, Main Track-sta. 6324+90 to sta. 6430+50.	
968	12-31-28	Place 286 creos. cross ties in Main Track-Mile 121.	
907	1-10-29	Retire 18" Y.C. Pipe and install 18" X 20" Rein. Conc. Pipe Culvert 40' long, sta. 6342+30.	
693	2-10-29	Apply add. 7'x9" tie plates, Mile 121+451. Mile 122+801. Trk #134+674.	
936	3-12-29	Extend culvert with 15" metal pipe 12' long at sta. 6412+57.	
992	12-31-29	Apply add. ballast to Main Track, Mile 121+234 Cu.Yd. Mile 122+38 Cu.Yd.	
1114	12-31-30	Apply 113 Cu.Yd. Screenings and 150 Cu.Yd. Stone ballast-Mile 121.	
1240	12-31-31	Apply 34 Cu.Yd. add. Stone ballast-Mile 122.	
1474	12-31-31	Replace 512 unt. cross ties with creos. cross ties-Mile 122.	
1439	12-31-33	Apply 68 Cu.Yd. add. Stone ballast-Mile 121.	
1298	Apr. 1935	Apply add. tie plates, Mile 121+160-7'x10", Mile 122+867-7'x9" and 62-7'x10".	
1562	12-31-35	Lay 80" rail in 984.5' of Pomona Road Passing Track.	
1666	12-31-35	Place tie plates in M.T. Mile 122.	
1737	12-31-36	Place tie plates in M.T. Mile 122.	
1870 F	12-31-37	Place 34 C.Y. stone ballast in M.T. Mile 121 & 169 C.Y. Mile 122.	
2142	6-6-39	Lay 90" rail in 1201.5' of Tr. 134 and 616' Business Spur.	



018-006

SHEET NO 60 OF 97 SHEETS OF
EASTERN DIVISION FROM SURVEY
STATION 6324+90 TO STATION 6430+50
JUNE 30, 1918
VALUATION DEPARTMENT
NASHVILLE, TENN.

RIGHT-OF-WAY AND TRACK MAP
EASTERN DIVISION
TENNESSEE CENTRAL RAILROAD
STATION 6324+90 TO STATION 6430+50
SCALE, 1 IN. = 200 FT. JUNE 30, 1918.

60