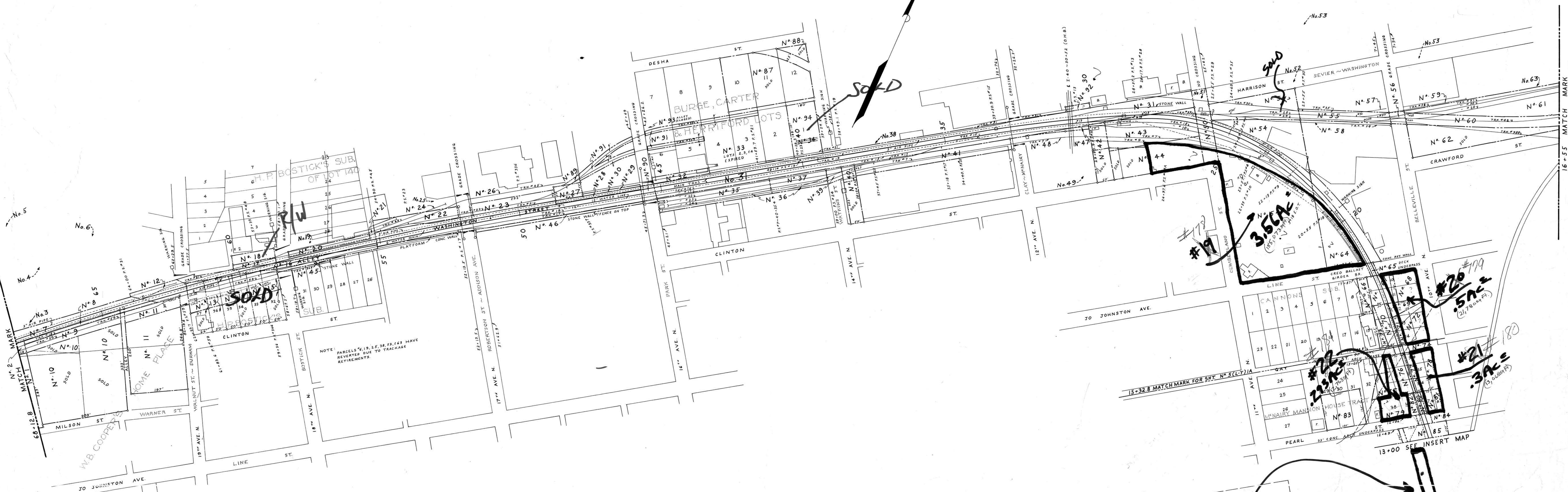
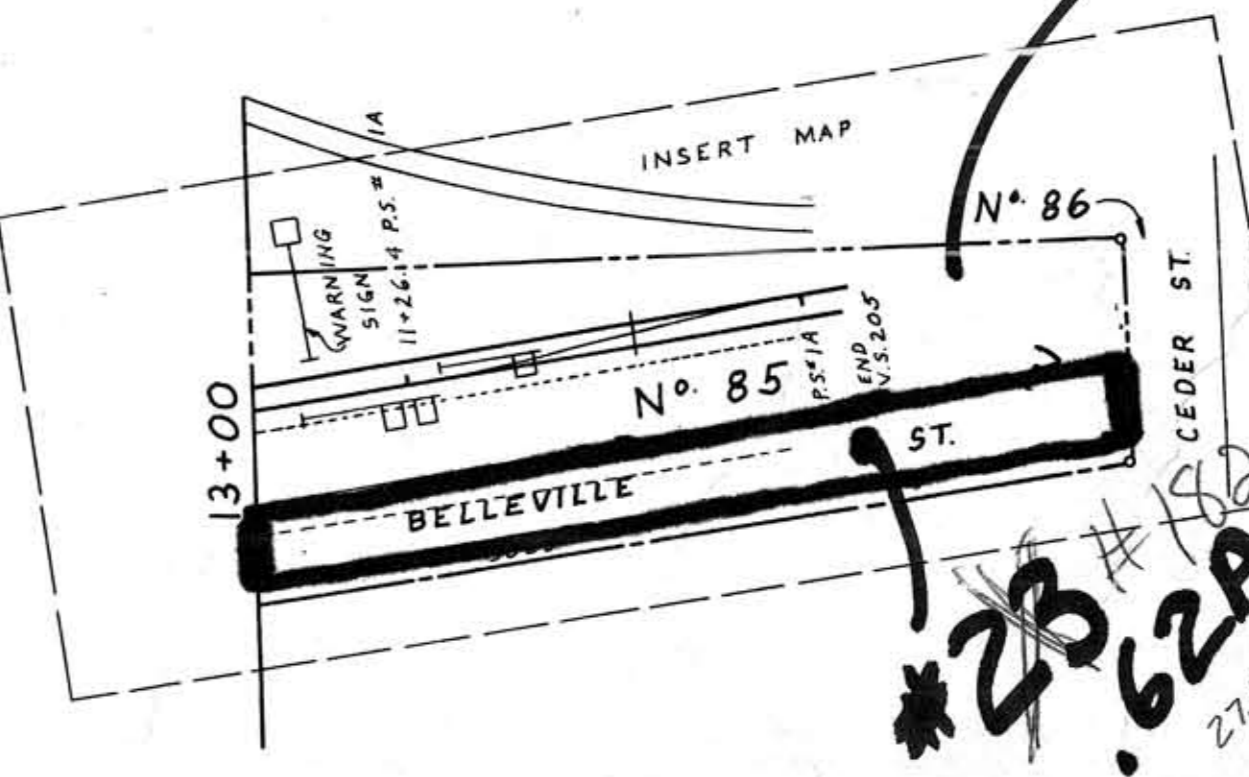


NASHVILLE, TENN.

SOLD



NOTE: PARCELS #19, 25, 30, 53, 63, 68 HAVE REVERTED DUE TO TRACKAGE RETIREMENTS.



RIGHT OF WAY AND TRACK MAP
LOUISVILLE AND NASHVILLE R. R. CO.
NASH. - CHATTA. & ST. LOUIS
RAILWAYS
NASHVILLE TERMINALS

STATION - 68+12.8 TO STATION - 15+32.8
SCALE 1 INCH = 100 FT.

OFFICE OF CHIEF ENGINEER
LOUISVILLE, KY.
REVISED & REDRAWN 9-9-70

V. 205 ~ 5-4-B

DAVIDSON CO.

19-016

V. 205
5-4-1

18-4