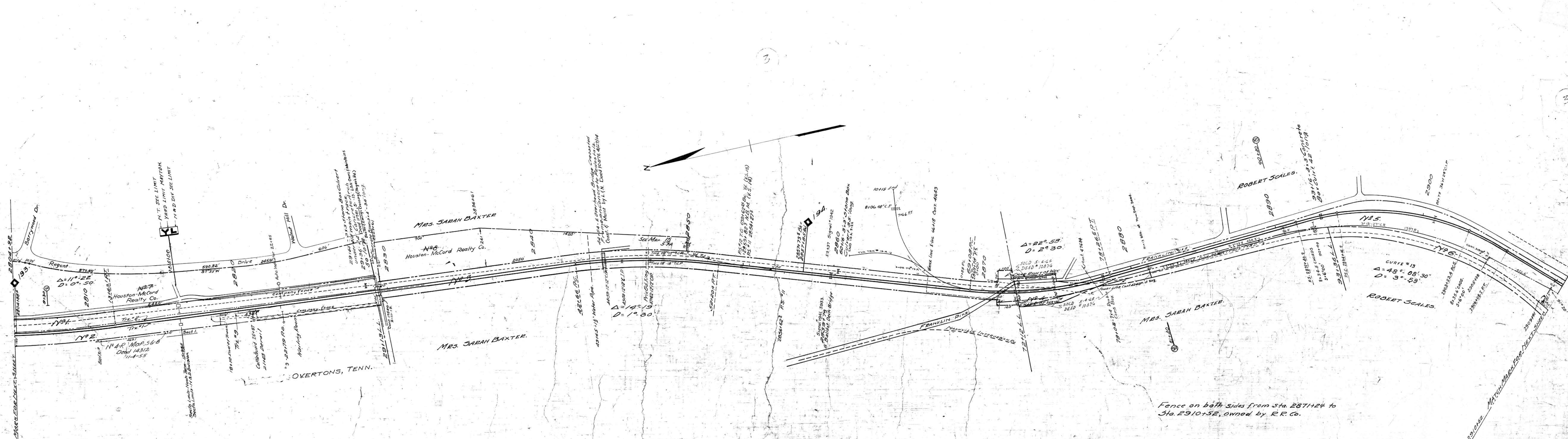


APP. No.	Date Comp.	Description of Change
22761	7-15-29	Sale of part of parcels 4-5-6.
19262	12-11-37	Sale of pt. of parcel 5-039A
19262	8-25-35	Ret. Shaller of Benlar and Overton
31336	5-2-46	Replace CIP with Double 7/4' Conc. Box
19027	8-34	Const. Tr. 1000 serving Trk 2 to 28072
32762	12-4-62	Ret. Overhead 36. 24 572. 2871+24

Par. N <sup>o</sup>	Grantor	Grantee	Inst.	Date	D.E.	Record Page	Date	Cost N <sup>o</sup>	Remarks
---------------------	---------	---------	-------	------	------	-------------	------	---------------------	---------



- 31250 11-1-38 Gen. Outdoor Adver. Co. 30' Sign (entr. right) at 2899+28
- 31510 5-23-40 " " " " " " " " " " " "
- Deed 17791 5-13 L.&N. to Own and Maintain Oil Br. at Franklin Ave. 2871+24 to 2829+36
- 10188 4-27-14 " " " " " " " " " " " "
- L.F. 19000-14 Cont. 3-19-51 M.H. Rogland, Partnership Fence Sta. 2758+83 to 2829+13 West Side.
- Cont. 41566 3-2-54 TVA Industrial Equip. Sta. 2859+24 1011' long.
- 41693 3-8-54 T.V.A. 2" Water Line Under at 2866+18
- 41694 3-8-54 T.V.A. " " " " " " " " " " " "
- 41695 2-7-54 City of Nashville. Sewer Pipe and 4" Gas Pipe under tracks at 2871+36
- 46949 2-7-61 Nashville Gas Company 2" Gas Pipe under tracks at 2871+36
- 47684 11-9-61 City of Nashville - Power Line X-ring at 77+25

SHEET NO. 3 OF 52 OF NASHVILLE AND DECATUR DIVISION FROM SURVEY  
 STATION 2804+92 TO STATION 2910+52  
 VALUATION ENGINEER

**RIGHT OF WAY AND TRACK MAP**  
 NASHVILLE AND DECATUR R. R. CO.  
 OPERATED BY  
 LOUISVILLE AND NASHVILLE R. R. CO.  
 STATION 2804+92 TO STATION 2910+52  
 SCALE 1" = 200 FT. JUNE 30, 1977  
 OFFICE CHIEF ENGINEER

19-026

V.L.S.  
 3  
 2-4