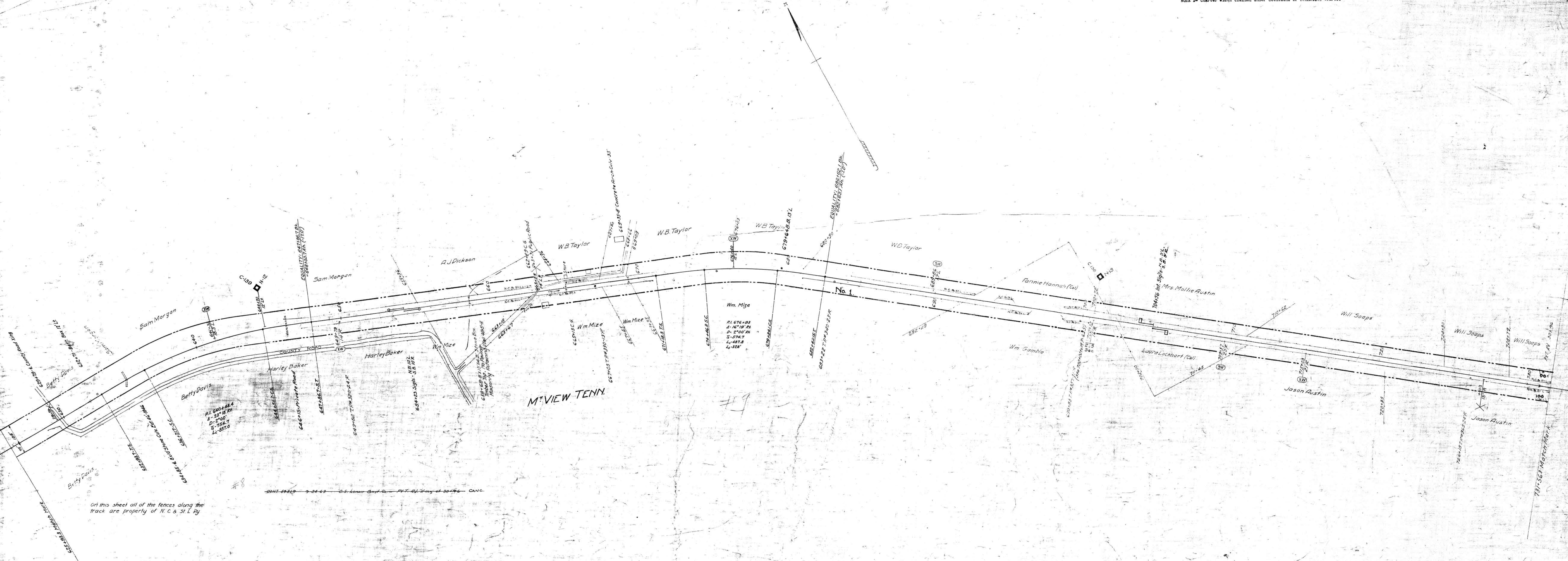


NOTE 1- Charter width claimed under decisions of Tennessee Courts.



On this sheet all of the fences along the track are property of N. C. & St. L. Ry.

RIGHT-OF-WAY AND TRACK MAP
 NASHVILLE, CHATTANOOGA AND ST. LOUIS RY.
 CHATTANOOGA DIVISION

STATION 625+93.3 TO STATION 731+56.3
 SCALE 1 IN. = 200 FT. JUNE 30, 1916

19-034

Sheet No. 2 of 73 sheets of
 Chattanooga Division firm survey
 Station 625+93.3 to Survey Station
 731+56.3
 M.P. 11.7 to 13.6

OFFICE OF CHIEF ENGINEER
 NASHVILLE, TENN.
 M.P. 11.7 to 13.6