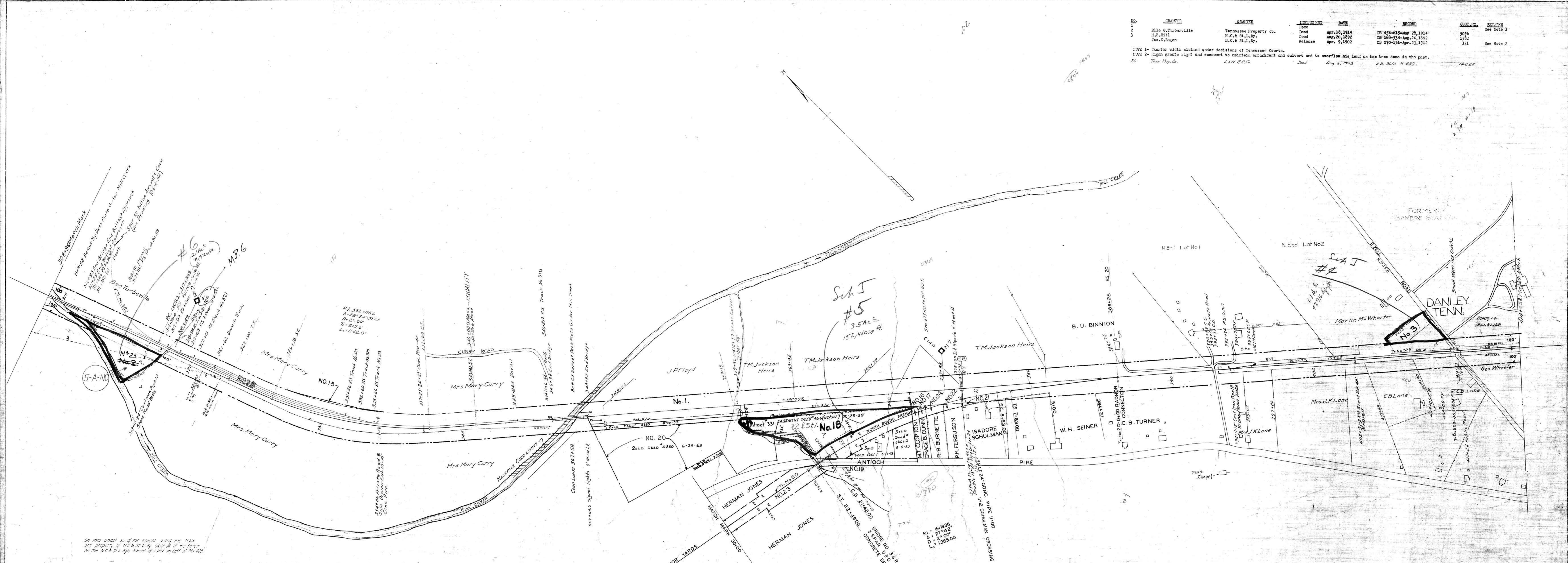


NO.	GRANTOR	GRANTEE	INSTRUMENT	DATE	RECORD	DATE	REMARKS
1	Ellis G. Turberville	Tennessee Property Co.	Deed	Apr. 18, 1914	10 454-615	May 26, 1914	5096 See Note 1
2	H.B. Hill	W.C. & S.L. Ry.	Deed	Aug. 28, 1892	10 158-234	Aug. 24, 1892	152
3	Joe. D. Roan	W.C. & S.L. Ry.	Release	Apr. 9, 1902	10 270-154	Apr. 23, 1902	331 See Note 2

NOTE 1 - Charter with abated under decisions of Tennessee Courts.
 NOTE 2 - Roan grants right and easement to maintain embankment and culvert and to overflow his land as has been done in the past.
 26 Tom Pop. Co. L.I.N.E.G. Deed Aug. 6, 1963 D.B. 3412 P. 487. 18824.



See this sheet as of the records being the same
 the property of W.C. & S.L. Ry. 2015 as of the person
 on the N.C. & S.L. Ry. 2015 as of the person

Cont. 44401 6-1-58 H.O. Reeves - Lease Par #18
 2221 7-20-46 Consolidated Vultee Aircraft Corp. - Contract system of tracks & trusses 12-19-47 by the Nashville Ry. Corp. - 1947
 Trans. 6-13-49. Avco Manufacturing Corporation - Memo. 10-20-60. Avco permitted to use its switch engine to maintain track

RIGHT-OF-WAY AND TRACK MAP
 NASHVILLE, CHATTANOOGA AND ST. LOUIS RY.
 CHATTANOOGA DIVISION

Station 308+96.3 TO STATION 414+65.3
 SCALE, 1 IN. = 200 FT. JUNE 30, 1916
 SHEET NO. 5 OF 73 SHEETS OF
 CHATTANOOGA DIVISION FROM SURVEY
 STATION 307+196.3 TO SURVEY
 STATION 414+65.3
 OFFICE OF CHIEF ENGINEER
 NASHVILLE, TENN.
 V. L. H. 202
 1916