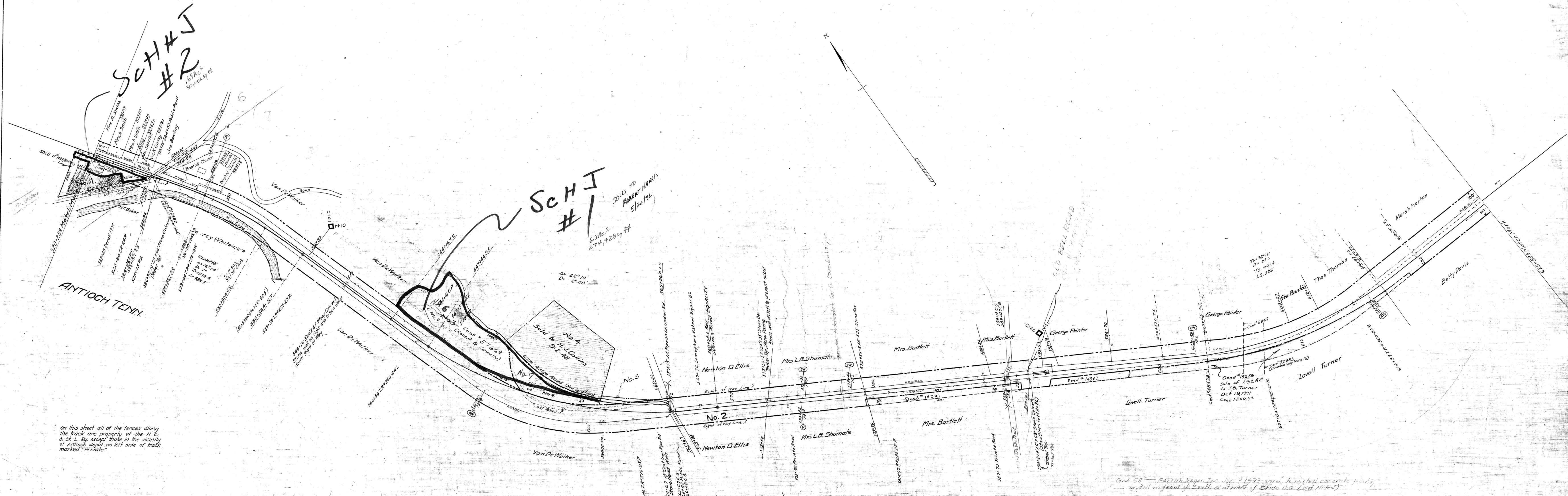


Deed #427 (N.C. 1st) L&N to Antioch Methodist Church Feb 28, 1964 Cont. Donation of parcel of
 sw of E. 34.38' ac of Np 9 cont. 0.68 ac
 Rec. 3760 p 275

Deed #4961 L&N to Shell Oil Co. April 15, 1966 G.C. Cons. 100th A parcel of land
 on W.S. R/W 51' wide between Vol. Sta 532+36 & 537+86 Cont. 0.67 Ac.
 Deed #14361 L&N to W.F. Moss & J.E. Moss - January 2, 1966
 Cons. \$125⁰⁰ Cont. 125 Acres

SCH #2
 #2
 1.67 AC
 30,021 sq. ft.

SCH #1
 SOLD TO
 ROBERT HARRIS
 5/22/34
 6.3 AC
 274,428 sq. ft.



on this sheet all of the fences along
 the track are property of the N.C.
 & St. L. Ry. except those in the vicinity
 of Antioch depot on left side of track
 marked "Private."

Cont. 58 - Parish, Rogers, Inc. Nov. 2, 1972 - 294 ft. installed concrete piling
 or still in front of South abutment of bridge No. 11-1-5

RIGHT-OF-WAY AND TRACK MAP
 NASHVILLE, CHATTANOOGA AND ST. LOUIS RY.
 CHATTANOOGA DIVISION

STATION 520+288 TO STATION 625+933
 SCALE, 1 IN. = 200 FT. JUNE 30, 1916

Sheet No. 7 of 73 sheets of
 Chattanooga Division from survey
 Station 520+288 to 625+933
 625+933
 Valuation Engineer

OFFICE OF CHIEF ENGINEER
 NASHVILLE, TENN.

DAVIDSON CO., TENN.

19-044