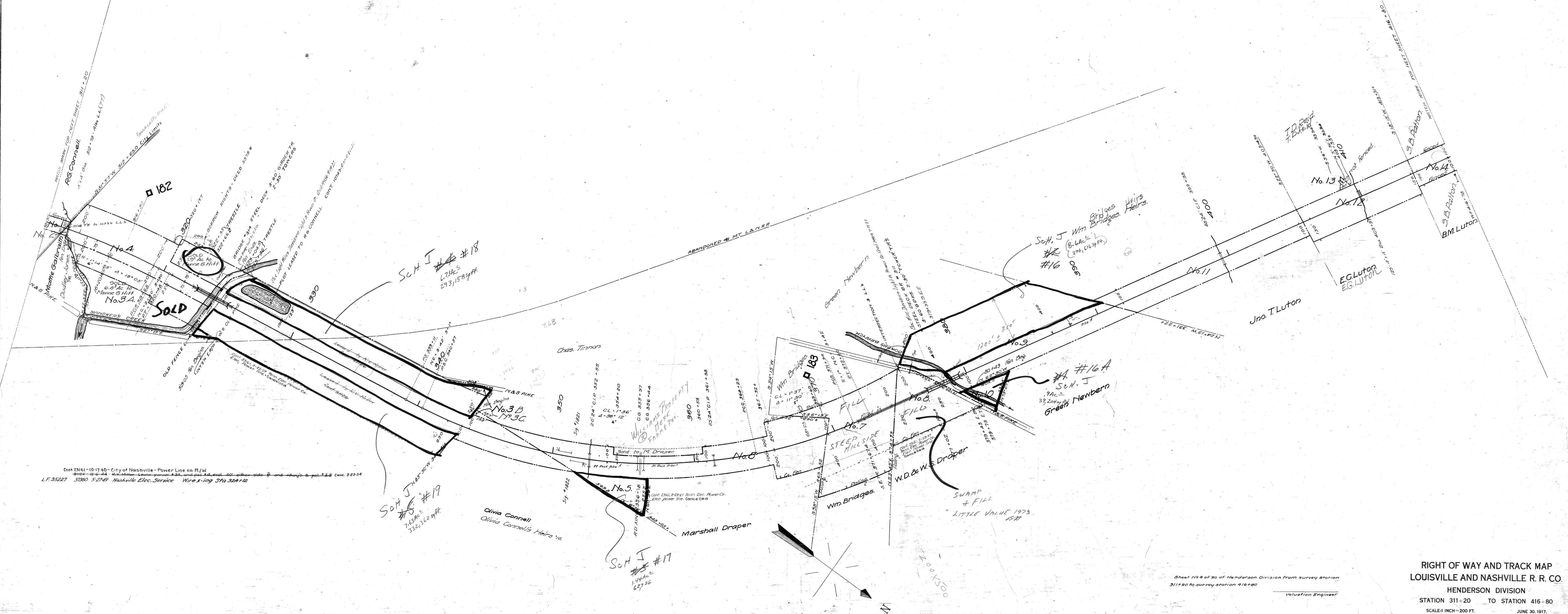


A.F.E. DATE COMP DESC. OF CHANGE  
 31743 6-30-43  
 16447 8-31-43  
 16447 8-31-43  
 Desc. of Change: On file to refer to 31743  
 Scale of 1" = 40' to include G.H.H., Pt. P. & L. & pl. 494  
 Ref. Bridge No. 311 & No. 314



Cent 25161-10-17-40 - City of Nashville - Power Line on R/W  
 31122-12-2-44 - 2nd. Main Lease parcel 23, and parcel 24, excl. 10' on the side W and along S. pol. 2, 3, 4. C.A.C. 3-23-54  
 L.F. 35227 3280 5-2-44 Nashville Elec. Service Wire 1-109 Sta 32412

Sheet No. 4 of 30 of Henderson Division from survey station  
 311+20 to survey station 416+80  
 Valuation Engineer

RIGHT OF WAY AND TRACK MAP  
 LOUISVILLE AND NASHVILLE R. R. CO.  
 HENDERSON DIVISION  
 STATION 311+20 TO STATION 416+80  
 SCALE: 1 INCH = 200 FT. JUNE 30, 1917.  
 OFFICE OF CHIEF ENGINEER,  
 LOUISVILLE, KY.

Davidson Co., Tenn.

19-049

1.30  
 4