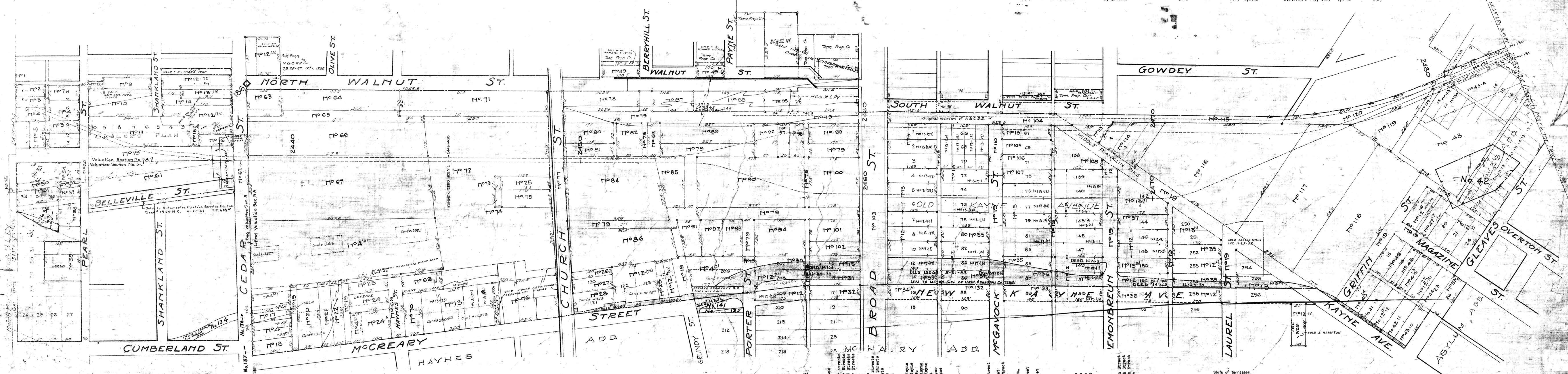


NO.	GRANTOR	GRANTEE	DATE	RECORD	REMARKS
4	M. Whitfield	J.H. Smith	May 8, 1893	D.B. 178, P. 409, May 9, 1893	3(4)
4(1)	E.J. Klummer	J.H. Smith	May 3, 1893	D.B. 179, P. 291, May 9, 1893	3(3)
4(2)	Ombelice Light & Power Co.	J.H. Smith	Dec. 9, 1894	D.B. 195, P. 265, Dec. 20, 1894	3(1)
4(3)	Mattie F. Blank	J.H. Smith	Mar. 23, 1893	D.B. 208, P. 418, Apr. 21, 1896	3(6)
4(4)	Conveyed with Parcel 4(3) by Deed 4(6)				
4(5)	Conveyed with Parcel 4(3) by Deed 4(6)				
4(6)	Conveyed with Parcel 4(3) by Deed 4(6)				
4(7)	Conveyed with Parcel 4(3) by Deed 4(6)				
4(8)	Mary Ryan	J.H. Smith	May 25, 1893	D.B. 181, P. 199, Aug. 1, 1893	3(5)
4(9)	Robert Hodges	J.H. Smith	Feb. 4, 1894	D.B. 186, P. 413, Sept. 12, 1898	3(2)
9	Wm. Brannford	L.N. Terminal Co.	Aug. 25, 1898	D.B. 231, P. 39, Aug. 31, 1898	18
11	L.A. R.R. Co.	L.N. Terminal Co.	Jun 14, 1899	D.B. 239, P. 106, Sep. 3, 1899	18
12	Isabelle Reeves	R.C. Lewis	May 16, 1898	D.B. 113, P. 12, May 26, 1898	2(25)
12(1)	Mary J. Tucker	R.C. Lewis	Dec. 15, 1898	D.B. 208, P. 313, Feb. 20, 1899	1(24)
12(2)	Wm. Graves	R.C. Lewis	Sep. 16, 1899	D.B. 198, P. 316, Dec. 26, 1899	1(24)
12(3)	Barry Ingean	R.C. Lewis	Dec. 15, 1898	D.B. 208, P. 313, Feb. 20, 1899	1(24)
12(4)	S.J. Cobb	R.C. Lewis	Sep. 25, 1891	D.B. 157, P. 583, Sep. 26, 1891	1(23)
12(5)	J.S. Arbushus	R.C. Lewis	Apr. 5, 1888	D.B. 158, P. 477, Oct. 28, 1891	1(22)
12(6)	J.W. Burgess	R.C. Lewis	Apr. 5, 1888	D.B. 162, P. 17, Oct. 28, 1891	1(22)
12(7)	This parcel transferred to city in consideration of other streets. See Parcel No. 19, Contract #4.				
12(8)	J.W. Simmons	R.C. Lewis	Jan. 20, 1890	D.B. 159, P. 225, Nov. 17, 1891	1(18)
12(9)	John Kirkman	R.C. Lewis	June 1, 1888	D.B. 208, P. 425, Apr. 21, 1896	1(20)

NO.	GRANTOR	GRANTEE	DATE	RECORD	REMARKS
13(10)	Conveyed with Parcel 4(3) by Deed 4(6)				
13(11)	Thomas H. Hartson	J.W. Thomas	April 1, 1884	D.B. 93, P. 582, Apr. 13, 1884	2(24)
13(12)	Thomas H. Hartson	J.W. Thomas	November 21, 1882	D.B. 75, P. 619, Nov. 19, 1882	2(22)
13(13)	Amelia J. Porter	J.W. Thomas	January 3, 1882	D.B. 71, P. 260, Jan. 5, 1881	2(22)
13(14)	Conveyed with Parcel 4(3) by Deed 4(6)				
13(15)	Conveyed with Parcel 4(3) by Deed 4(6)				
13(16)	Norman Kirkman	J.W. Thomas	April 14, 1884	D.B. 83, P. 585, Apr. 18, 1884	2(21)
13(17)	David Weaver	J.W. Thomas	June 15, 1882	D.B. 74, P. 302, Jul. 11, 1882	2(17)
13(18)	David Weaver	J.W. Thomas	Apr. 17, 1881	D.B. 70, P. 211, Nov. 7, 1881	2(19)
13(19)	Catherine De Lancy	J.W. Thomas	Apr. 17, 1882	D.B. 72, P. 299, Apr. 6, 1882	2(18)
13(20)	J.W. Lumbard	J.W. Thomas	Dec. 14, 1881	D.B. 71, P. 140, Dec. 14, 1881	2(20)
13(21)	J.W. Lumbard	J.W. Thomas	Jan. 10, 1884	D.B. 82, P. 284, Mar. 13, 1884	2(15)
13(22)	J.W. Lumbard	J.W. Thomas	Jan. 13, 1885	D.B. 87, P. 122, Jan. 27, 1885	2(14)
13(23)	H.H. Smith	J.W. Thomas	Dec. 14, 1881	D.B. 71, P. 141, Dec. 14, 1881	2(13)
13(24)	Louisville & Nashville Terminal Co.	J.W. Thomas	Oct. 28, 1881	D.B. 70, P. 459, Oct. 29, 1881	2(12)
13(25)	I.P. Hillman	J.W. Thomas	Apr. 19, 1884	D.B. 83, P. 584, Apr. 22, 1884	2(11)
13(26)	R.W. Turner	J.W. Thomas	Feb. 28, 1896	D.B. 208, P. 200, Mar. 2, 1896	2(8)
13(27)	R.F. Lester	J.W. Thomas	Sep. 19, 1891	D.B. 11, P. 368, Sep. 19, 1891	2(6)
13(28)	Edw. Quinn	J.W. Thomas	Sept. 21, 1898	D.B. 96, P. 438, Oct. 6, 1898	2(7)

NO.	GRANTOR	GRANTEE	DATE	RECORD	REMARKS
13(29)	J.W. Thomas	J.W. Thomas	to record	D.B. 159, P. 339, Jun. 10, 1892	1(19)
13(30)	J.W. Thomas	J.W. Thomas	to record	D.B. 153, P. 269, Sept. 15, 1891	1(5)
13(31)	J.W. Thomas	J.W. Thomas	to record	D.B. 157, P. 103, Oct. 26, 1891	2(6)
13(32)	Parcel transferred to city in consideration of other streets. See Parcel 4(3), Contract #4.				
13(33)	J.W. Thomas	J.W. Thomas	to record	D.B. 159, P. 303, Oct. 28, 1891	1(15)
13(34)	J.W. Thomas	J.W. Thomas	to record	D.B. 159, P. 303, Oct. 28, 1891	1(16)
13(35)	J.W. Thomas	J.W. Thomas	to record	D.B. 159, P. 303, Oct. 28, 1891	1(17)
13(36)	J.W. Thomas	J.W. Thomas	to record	D.B. 159, P. 303, Oct. 28, 1891	1(18)
13(37)	J.W. Thomas	J.W. Thomas	to record	D.B. 159, P. 303, Oct. 28, 1891	1(19)
13(38)	J.W. Thomas	J.W. Thomas	to record	D.B. 159, P. 303, Oct. 28, 1891	1(20)
13(39)	J.W. Thomas	J.W. Thomas	to record	D.B. 159, P. 303, Oct. 28, 1891	1(21)
13(40)	J.W. Thomas	J.W. Thomas	to record	D.B. 159, P. 303, Oct. 28, 1891	1(22)
13(41)	J.W. Thomas	J.W. Thomas	to record	D.B. 159, P. 303, Oct. 28, 1891	1(23)
13(42)	J.W. Thomas	J.W. Thomas	to record	D.B. 159, P. 303, Oct. 28, 1891	1(24)
13(43)	J.W. Thomas	J.W. Thomas	to record	D.B. 159, P. 303, Oct. 28, 1891	1(25)
13(44)	J.W. Thomas	J.W. Thomas	to record	D.B. 159, P. 303, Oct. 28, 1891	1(26)
13(45)	J.W. Thomas	J.W. Thomas	to record	D.B. 159, P. 303, Oct. 28, 1891	1(27)
13(46)	J.W. Thomas	J.W. Thomas	to record	D.B. 159, P. 303, Oct. 28, 1891	1(28)
13(47)	J.W. Thomas	J.W. Thomas	to record	D.B. 159, P. 303, Oct. 28, 1891	1(29)
13(48)	J.W. Thomas	J.W. Thomas	to record	D.B. 159, P. 303, Oct. 28, 1891	1(30)
13(49)	J.W. Thomas	J.W. Thomas	to record	D.B. 159, P. 303, Oct. 28, 1891	1(31)
13(50)	J.W. Thomas	J.W. Thomas	to record	D.B. 159, P. 303, Oct. 28, 1891	1(32)



Memorandum of certain property charged to the L.N. Terminal Company for which that Co. has no deeds.
 Cost of property used in changing location of Walnut St.
 Amount charged by N.C. & S.L.Ry. to Louisville and Nashville Terminal Co.
 Mary A. Tomble Deed No. 107-17 - Broadway St. \$16,201.40
 Wm. S. M. Deed No. 69 - McGavock St. 4,336.85
 W. G. Smith Deed No. 65 - McGavock St. 3,543.61
 W. G. Simmons Deed No. 65 - McGavock St. 18,439.07 \$42,320.93

Voucher No. 26, Nov. 1898 - Paid City of Nashville, Tenn.
 Property Contained for the opening of New Payne Ave. and widening and extending Walnut St.
 D. McGowan 40x101 @ \$100.00 per ft. 2,590.00
 O. W. Harrison 40x122 65.00 2,725.20
 C. W. H. Hays 30x80 550.00
 Jerry E. McKay Lot #89 Meriary Plan 50x169 3,750.00
 M. J. Hays Lot #88 50x175 3,750.00
 M. J. Hays Leasehold Estate 30.00
 M. J. Hays Compensation - 7 @ \$30.00 each 210.00 \$13,605.20

NO.	GRANTOR	GRANTEE	DATE	RECORD	REMARKS
13(10)	Conveyed with Parcel 4(3) by Deed 4(6)				
13(11)	Thomas H. Hartson	J.W. Thomas	April 1, 1884	D.B. 93, P. 582, Apr. 13, 1884	2(24)
13(12)	Thomas H. Hartson	J.W. Thomas	November 21, 1882	D.B. 75, P. 619, Nov. 19, 1882	2(22)
13(13)	Amelia J. Porter	J.W. Thomas	January 3, 1882	D.B. 71, P. 260, Jan. 5, 1881	2(22)
13(14)	Conveyed with Parcel 4(3) by Deed 4(6)				
13(15)	Conveyed with Parcel 4(3) by Deed 4(6)				
13(16)	Norman Kirkman	J.W. Thomas	April 14, 1884	D.B. 83, P. 585, Apr. 18, 1884	2(21)
13(17)	David Weaver	J.W. Thomas	June 15, 1882	D.B. 74, P. 302, Jul. 11, 1882	2(17)
13(18)	David Weaver	J.W. Thomas	Apr. 17, 1881	D.B. 70, P. 211, Nov. 7, 1881	2(19)
13(19)	Catherine De Lancy	J.W. Thomas	Apr. 17, 1882	D.B. 72, P. 299, Apr. 6, 1882	2(18)
13(20)	J.W. Lumbard	J.W. Thomas	Dec. 14, 1881	D.B. 71, P. 140, Dec. 14, 1881	2(20)
13(21)	J.W. Lumbard	J.W. Thomas	Jan. 10, 1884	D.B. 82, P. 284, Mar. 13, 1884	2(15)
13(22)	J.W. Lumbard	J.W. Thomas	Jan. 13, 1885	D.B. 87, P. 122, Jan. 27, 1885	2(14)
13(23)	H.H. Smith	J.W. Thomas	Dec. 14, 1881	D.B. 71, P. 141, Dec. 14, 1881	2(13)
13(24)	Louisville & Nashville Terminal Co.	J.W. Thomas	Oct. 28, 1881	D.B. 70, P. 459, Oct. 29, 1881	2(12)
13(25)	I.P. Hillman	J.W. Thomas	Apr. 19, 1884	D.B. 83, P. 584, Apr. 22, 1884	2(11)
13(26)	R.W. Turner	J.W. Thomas	Feb. 28, 1896	D.B. 208, P. 200, Mar. 2, 1896	2(8)
13(27)	R.F. Lester	J.W. Thomas	Sep. 19, 1891	D.B. 11, P. 368, Sep. 19, 1891	2(6)
13(28)	Edw. Quinn	J.W. Thomas	Sept. 21, 1898	D.B. 96, P. 438, Oct. 6, 1898	2(7)

State of Tennessee,
 County of Davidson,
 I, the undersigned officer of the Louisville and Nashville Terminal Company do hereby certify that this is a correct map in a series of four (4) sheets of said company's property, from L.N. & R.R. Co. survey station 314-328 to station 314-328, or from N.C. & S.L.Ry. survey station 15-328 to common zero to station 314-328, Nashville Terminal, prepared from records of the L.N. & R.R. Co. and N.C. & S.L.Ry.
 Valuation Engineer, N.C. & S.L.Ry.
 Correct
 Subscribed and sworn to before me this _____ day of _____ 1916
 Notary public in and for the County of Davidson, State of Tennessee.
 My commission expires _____

STATION MAP.
 LOUISVILLE & NASHVILLE TERMINAL CO.
 OPERATED BY
 LOUISVILLE & NASHVILLE RAILROAD CO.
 AND
 NASHVILLE, CHATTANOOGA AND ST. LOUIS RY.
 NASHVILLE TERMINALS.
 STATION 15-328 TO COMMON ZERO TO STATION 314-328.
 SCALE 1 IN. = 100 FT. JUNE 30, 1916
 OFFICE OF CHIEF ENGINEER
 NASHVILLE, TENN.