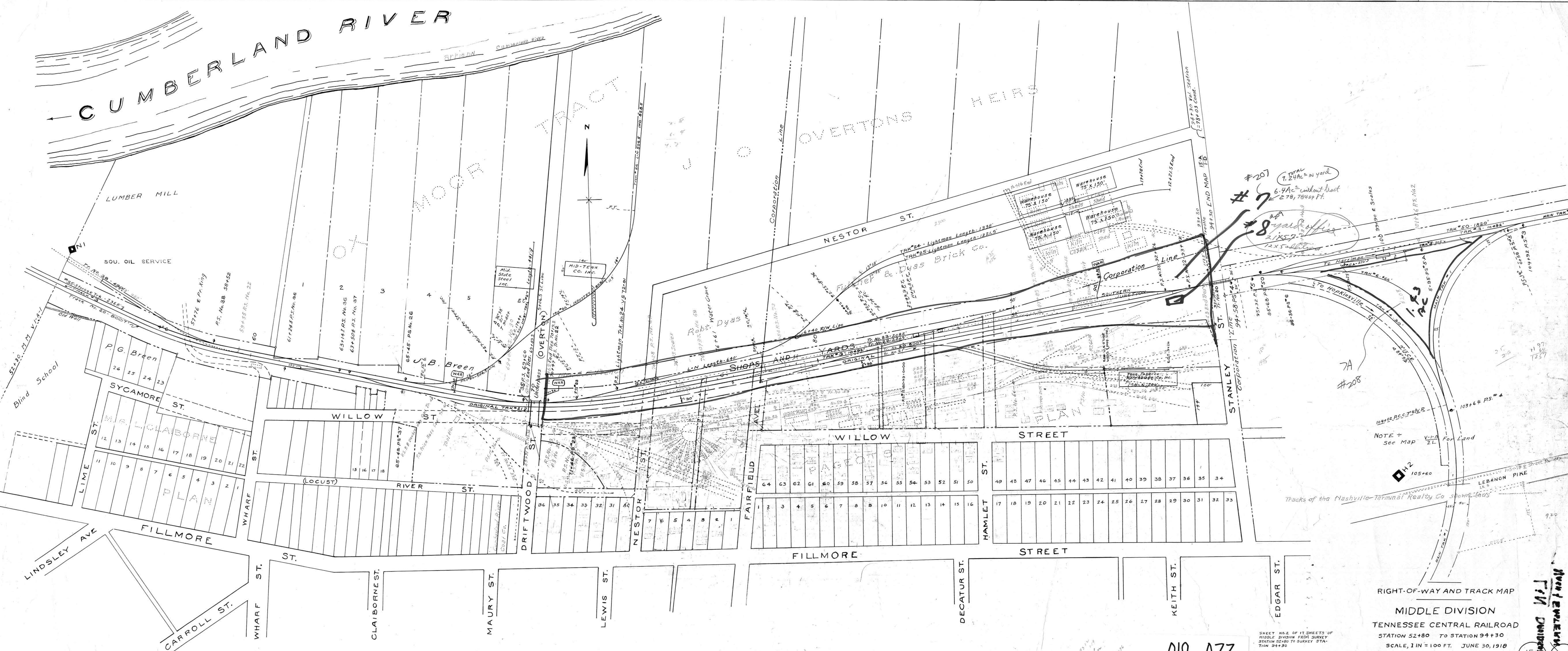


CUMBERLAND RIVER



#207
 #7
 #8
 7.24Ac in yard
 6.4Ac without tract
 278,784sq ft.
 21x57
 12x5

7A
 #208

NOTE - See Map V-1-A For Land

RIGHT-OF-WAY AND TRACK MAP
 MIDDLE DIVISION
 TENNESSEE CENTRAL RAILROAD
 STATION 52+80 TO STATION 94+30
 SCALE, 1 IN = 100 FT. JUNE 30, 1918

DAVIDSON COUNTY TENN.

019-073

SHEET NO. 5 OF 17 SHEETS OF
 MIDDLE DIVISION FROM SURVEY
 STATION 52+80 TO SURVEY STA-
 TION 94+30

VALUATION DEPARTMENT
 NASHVILLE, TENN.
 Traced From Original - Sept. 3, 1958

HUNT & EVERETT
 CIVIL ENGINEERS
 157 1/2
 1-1
 1-1
 1-1