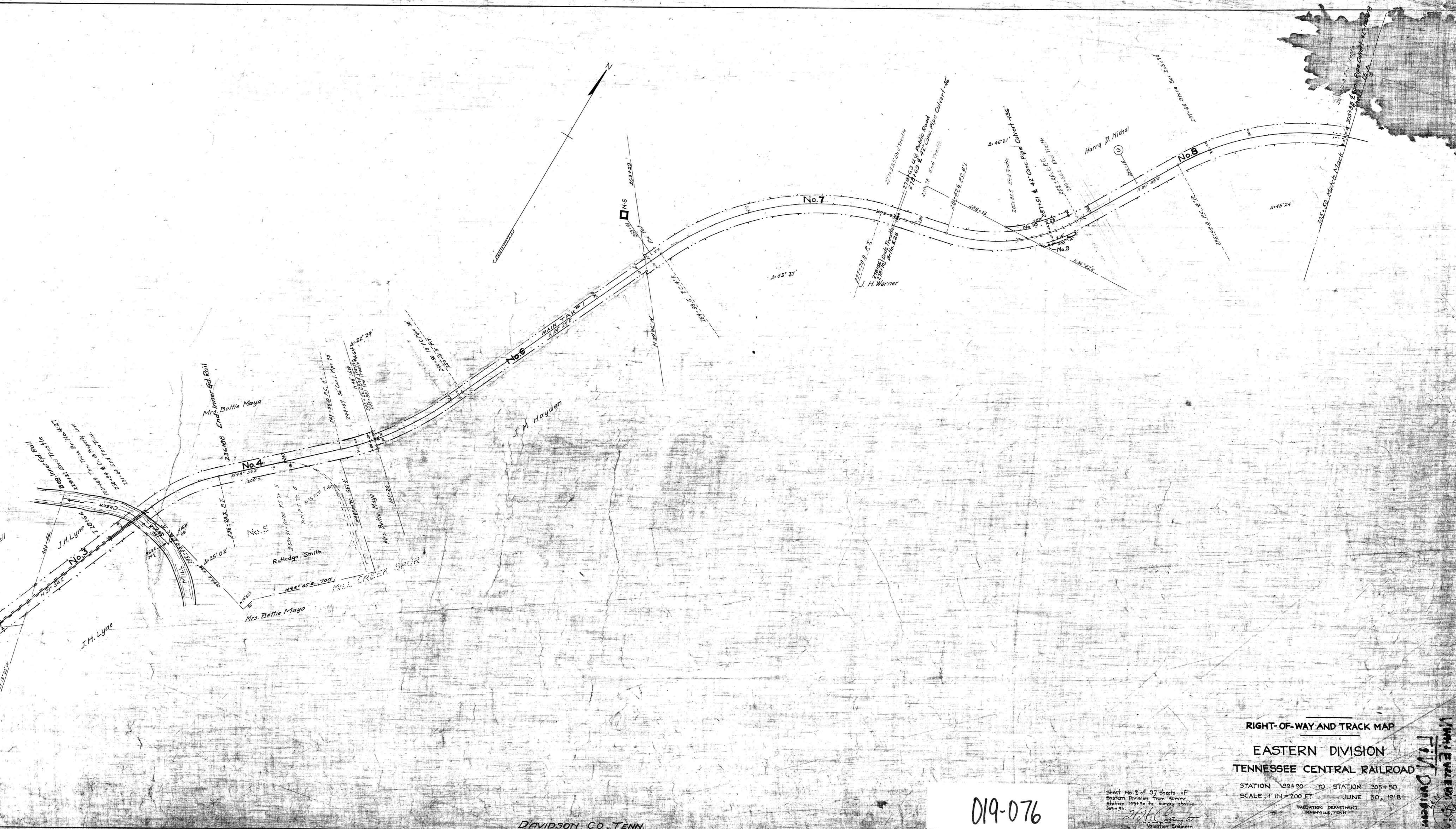


A.F.E. No	DATE	PROPERTY CHANGES SINCE JUNE 30, 1918	DESCRIPTION
723	July, 1919	Replace E. 120' of W. Approach of Br. #4, 27 with O.D. pile trestle, 120' long. Total W. App. 1094' long.	
701	1-31-22	Retire all roadway property by sale to T.C. Ry. Co.	
13	2-1-22	Addition of all roadway property by purchase by T.C. R.R. Co.	
22	7-15-22	Replace E. 120' of W. Approach to Br. #4, 27 with creos. piles and carry deck.	
52	6-22-23	Place add. T. 1 1/2" tie plates. Sta. 5+1000. Mile 5+700.	
21	7-14-23	Construct Creos. ballasted Jack Br. #5, 79, 16' long.	
198	7-20-23	Replace 97 1/2' of W. Approach Br. #4, 27 with fill and 36" C.I. Lock Joint Pipe Culvert - 81' long.	
242	10-13-23	Construct Br. #5, 29, creos. ballasted deck trestle, 14' long.	
1424	11-27-23	Apply third chord on W. Approach of Br. #4, 27 - 120' long.	
40	12-9-23	Apply 132 additional T. 1 1/2" tie plates - Mile 6.	
39	12-31-23	Construct R/W Fence N. side, sta. 211+16 to 230+00. Retire R/W Fence, N. side, sta. 211+16 to 219+50 and sta. 243+30 to 248+50.	
319	1-4-24	Retire Br. #5, 45 and replace with fill and 42" concrete pipe culvert 136' long. Purchase of additional R/W - Parcels #9 and #10.	
301	2-9-24	Fill Br. #5, 28 and place 42" concrete pipe culvert - 46' long. One panel replaced with ballasted deck bridge 14' long.	
52	4-15-24	Retire Br. #5, 79 - 180' long.	
336	6-9-24	Replace Br. #4, 54 with creos. pile ballasted deck trestle 14' long.	
345	8-8-24	Fill Br. #5, 79, 16' long and place 42" concrete pipe culvert 100' long.	
1020	8-30-24	Lay 100# rail in Main Track - sta. 199+50 to 204+57.	
1425	11-20-24	Place additional T. 1 1/2" tie plates. Mile 5+936. Mile 6+1044.	
1020	12-31-24	Place 100 Cu. Yd. add. slag ballast and convert 100 Cu. Yd. Cinder ballast to embankment - Mile 5.	
1020	12-31-24	Construct R/W Fence, S. side, sta. 211+16 to 230+00. Retire R/W Fence, S. side, sta. 211+16 to sta. 219+80.	
1366	12-31-25	Place 100 Cu. Yd. Slag ballast and convert 100 Cu. Yd. Cinder ballast to embankment - Mile 5.	
495	1925	Apply 54 Cu. Yd. additional Slag ballast - Mile 6.	
562	6-12-26	Retire Main Track cross ties. Mile 5+49. Mile 6+183.	
1020	10-20-26	Retire 800 5" x 8" tie plates - Mile 5.	
1429	12-31-26	Place add. T. 1 1/2" tie plates. Mile 5+1232. Mile 6+1444.	
614	12-31-26	Apply 145 Cu. Yd. Stone ballast and convert 75 Cu. Yd. Cinder ballast to embankment - Mile 5.	
702	12-31-26	Construct R/W Fence, N. and S. sides, sta. 263+91 to 279+55. Retire R/W Fence, N. and S. sides, sta. 263+91 to 277+92.	
692	2-25-27	Install inner guard rail on curve E. end Br. #4, 27. Sta. 232+23.5 to sta. 237+77.6.	
967	6-23-27	Install creos. wood inner guard rail on Br. #4, 27 - sta. 229+21 to sta. 231+31.5.	
1020	10-21-27	Replace Br. #4, 02 with creos. ballasted deck trestle 40' long.	
634	12-31-27	Place 304 treated bridge ties on Br. #4, 27.	
968	12-31-27	Apply 146 Cu. Yd. additional Slag ballast - Mile 6.	
1020	7-24-28	Place add. tie plates. Mile 5+120 - T. 1 1/2". Mile 6+406 - T. 1 1/2" and 428 - 6" x 8".	
1605	12-31-28	Place creos. cross ties in Main Track Mile 5+82. Mile 6+460.	
693	12-31-28	Apply 154 Cu. Yd. additional Stone ballast - Mile 6.	
808	12-31-28	Construct R/W Fence, N. and S. sides, sta. 278+70 to 285+83. Retire R/W Fence, N. and S. sides, sta. 279+56 to 285+95.	
992	2-10-29	Place 154 T. 1 1/2" tie plates - Mile 6.	
1002	5-10-29	Place add. T. 1 1/2" tie plates. Mile 5+522. Mile 6+954. Retire tie plates. Mile 5+388 - 5 1/2" x 8". Mile 6+366 - 5 1/2" x 8" and 2638 - 5 1/2" x 8".	
1160	12-31-29	Place add. Stone ballast. Mile 5+154 Cu. Yd. Mile 6+263 Cu. Yd.	
1206	4-23-30	Apply additional T. 1 1/2" tie plates. Mile 5+460. Mile 6+206.	
114	10-25-30	Retire Tracks #5, #6, and #7 and transfer 15,008 A. Right-of-Way, Parcel #5, to Acct. #705.	
1576	10-28-30	Lay 210.5' of 8" inner guard rail on Br. #4, 27 releasing 210.5' of 4" x 8" creos. wooden inner guard rail and lay 59.5' additional 60" x 8" inner guard rail. Present G.R. sta. 228+64 to 236+88.	
1474	12-31-30	Apply additional Stone ballast. Mile 5+154 Cu. Yd. Mile 6+193 Cu. Yd.	
1544	Dec. 1930	Construct R/W Fence, N. and S. sides, sta. 285+83 to 305+50. Retire R/W Fence, N. side, sta. 285+83 to 285+95 and sta. 289+15 to 305+00. S. side, sta. 289+15 to 305+50.	
1563	12-31-31	Replace untreated cross ties with creos. cross ties. Mile 5+75. Mile 6+98.	
1694	6-24-32	Apply additional tie plates. Mile 5+40 - T. 1 1/2". Mile 6+44 - T. 1 1/2" and 14 - T. 1 1/2".	
1736	1-10-34	Retire Non-carrier land by sale. Part of Parcel #5.	
1830	April, 1935	Apply 10 add. T. 1 1/2" tie plates - Mile 5.	
1737	7-30-34	Lay 100# relay rail in M.T. Sta. 199+00 to Sta. 305+50.	
1870 F	12-31-34	Place 340 C.Y. stone ballast in M.T. Mile 5 & 237 C.Y. Mile 6.	
1866	12-31-34	Place 100# rail anchors, Miles 5 & 6.	
2008	12-31-34	Place tie plates in M.T. Miles 5 & 6.	
	3-31-37	Place 34 C.Y. stone ballast in M.T. Mile 5 & 34 C.Y. in Mile 6.	
	12-31-37	Place 152 C.Y. stone ballast in M.T. Mile 6.	
	12-31-37	Construct R/W Fence S. side Sta. 205+60 to Sta. 214+02 & Sta. 234+57 to Sta. 245+10. Retire fence.	
	12-31-38	Construct R/W Fence N. Side Sta. 263+20 to Sta. 285+70 and S. side Sta. 263+45 to Sta. 286+10.	
	12-31-38	Retire fence both sides Sta. 243+91 to Sta. 278+55 & Sta. 278+70 to Sta. 285+83. S. side Sta. 285+83 to 286+10.	



RIGHT-OF-WAY AND TRACK MAP  
EASTERN DIVISION  
TENNESSEE CENTRAL RAILROAD

STATION 199+90 TO STATION 305+50  
SCALE, 1" IN = 200 FT  
JUNE 30, 1918

019-076

Sheet No. 2 of 97 sheets of  
Eastern Division from Survey  
Station 199+90 to Survey Station  
305+50.  
J.H. Warner  
Valuation Engineer

Vertical Engineer  
T.C. Davidson