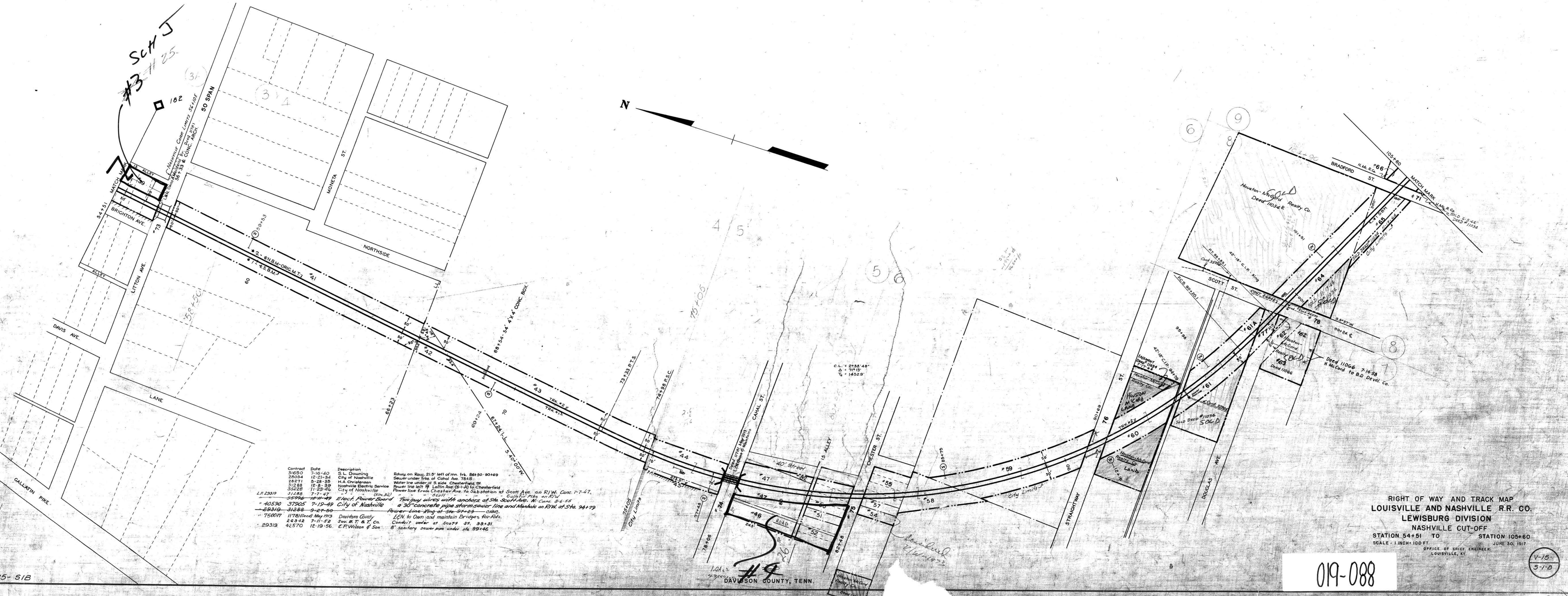


A.F.E. No.	Date	Description
3-27-17	3-27-17	Purchase parcel #71
11-19-17	11-19-17	Retire parcel #67
12-28-22	12-28-22	Purchase parcels #51, 52, 54, 69, & 47
4916	8-12-23	Retire parcels #48, 49, 56, 59, & 71
8579	8-12-23	Purchase parcel #73
8644	11-12-26	Retire parcel #73
	8-22-28	parcels #31 & 38
40618	8-10-30	part of parcel #52
57458	11-19-34	Cont. Top of Timber Walkway Between Main Trks. on Bridge
57459	11-19-34	Cont. Top of Timber Walkway Between Main Trks. on Bridge
57459	11-19-34	Cont. Top of Timber Walkway Between Main Trks. on Bridge



Contract	Date	Description	Description
31650	7-16-40	S.L. Downing	Relay on Row, 21' left of mn. trk. 86+50-90+69
28034	12-21-34	City of Nashville	Sewer under title of Canal St. 78+18
28271	5-28-35	H.A. Christensen	Water line under al S. side, Chesterfield St.
31288	12-8-39	Nashville Electric Service	Power line left of Litton Ave (S-1-A) to Chesterfield
35222	11-23-46	City of Nashville	Power line from Chester Ave. to substation at Scott Ave. on R.W. Conc. 7-7-47.
L.F. 23319	3-12-49	City of Nashville	Two guy wires with anchors at Sta. Scott Ave. N. Conc. 8-6-55
40590	3-7-47	City of Nashville	a 30" concrete pipe storm sewer line and Manhole on R.W. at Sta. 94+79
89319	3-27-50	City of Nashville	Power line along of Sta. 97+23 - 110.
75007	11-78(Over) May 1913	Davidson County	LEN to Own and maintain Bridges for Rds.
26942	7-11-52	Sev. B. T. & T. Co.	Conduit under at Scott St. 99+31
29319	4-25-56	E.P. Wilson & Son	8" sanitary sewer pipe under Sta. 99+46

RIGHT OF WAY AND TRACK MAP  
 LOUISVILLE AND NASHVILLE R.R. CO.  
 LEWISBURG DIVISION  
 NASHVILLE CUT-OFF  
 STATION 54+51 TO STATION 105+60  
 SCALE - 1 INCH = 100 FT.  
 OFFICE OF CHIEF ENGINEER  
 LOUISVILLE, KY.

019-088

V-15  
 5-1-D