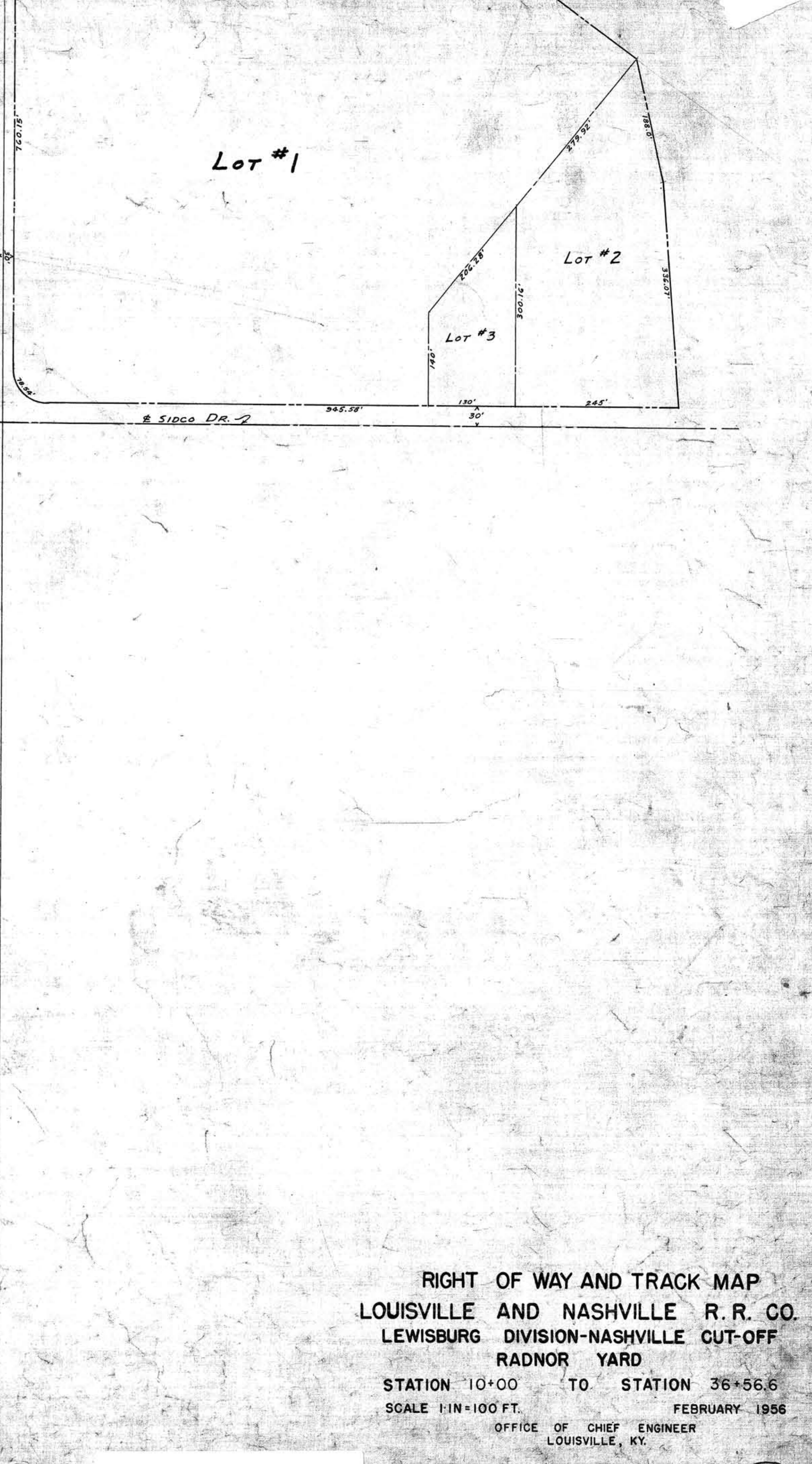
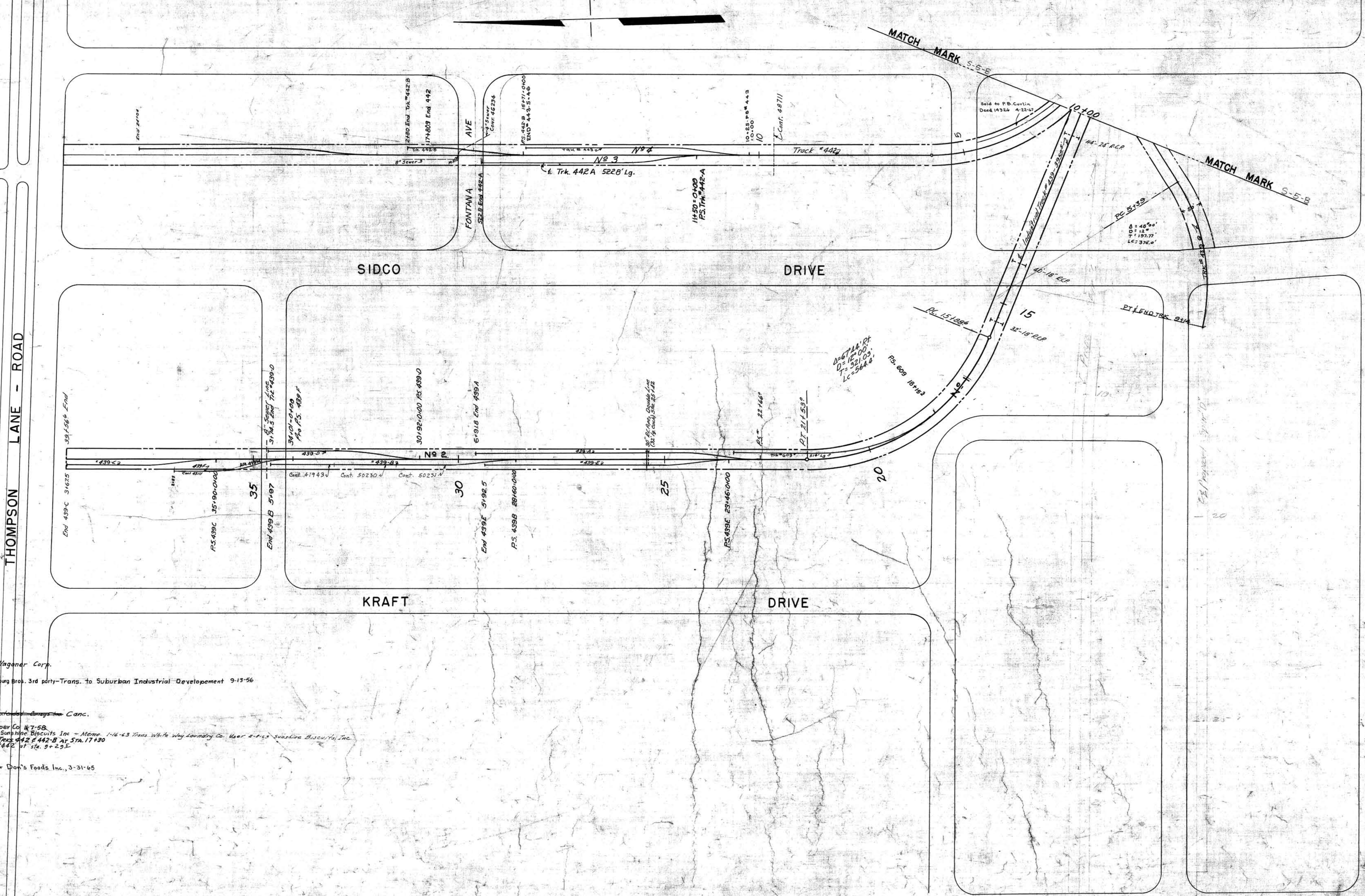


L. F.	A.F.E.	COMP.	DESCRIPTION
39717	46093	8-8-55	Const. Trk. 439-B 597' long (W&L Investments)
39684	45595	2-10-55	" " 439-A 691.8' " (Amer. & Sou. Corp.)
39722	46218	8-16-55	" " 439-C 367.5' " (Kraft Foods)
39735	46335	9-13-55	" " 439-E 392.5' " (Sears)
39723	46220	2-10-55	" " 439-D 376.5' " (Bond-Sanders)
47844	46184	6-16-56	" " 442-A 248' " Sta. 34+01
43182	46182	12-9-56	" " 442-B 514' " (Thomas Realty Co.)
50557	50625	12-9-56	" " 442-B-280' "
50625	50992	8-2-60	" " 439-A 574' Sta. 6+10

L. F.	CONT.	DATE	NAME
39684	41689	9-3-55	Americo & Southern Corp.
29319	41942	1-26-55	City of Nashville
39717	41943	1-27-55	W&L Investments
39722	42168	1-18-55	Kraft Foods Co.
39735	42218	6-15-55	Sears Roebuck & Co.
39723	41893	1-24-55	Bond Sanders Paper Co.
39705	46866	6-18-56	J.W. Murray & Josephine Murray
43111	43111	10-3-56	Besse & Co. Inc.
39972	44766	10-4-58	Thomas Realty Co.
39974	44804	11-7-58	K.B. Hurrell & D. Powell
44142	46234	5-17-60	Cincinnati Silver Metal & Finishing Co. - 4" C.I. Sewer Line under Trk. 442-B at Sta. 17+30
48711	48711	1-7-63	Farm Service Corp. - 6" sewer line under Trk. 442-B at Sta. 17+30
41923	50230	6-7-64	W.P.L. Investments in lease 153.5' of Trk. 439-B
50230	50231	6-7-64	Crown II & Harris Inc. - Lease 150' of Trk. 439-B
50231	5106	12-9-65	Golden Fields Inc. - Lease 293.7' of Trk. 439-B - User Don's Foods Inc., 3-31-65
			J.L. Chan, J.T. Crain & Leon Beard - extension of Trk. 442



RIGHT OF WAY AND TRACK MAP
 LOUISVILLE AND NASHVILLE R. R. CO.
 LEWISBURG DIVISION-NASHVILLE CUT-OFF
 RADNOR YARD
 STATION 10+00 TO STATION 36+56.6
 SCALE 1"=100' FT. FEBRUARY 1956
 OFFICE OF CHIEF ENGINEER
 LOUISVILLE, KY.

019-097